

**SOLD**

## WATERFRONT LOCATION , PERMANENT RELOCATABLE HOME

Located in Discovery Holiday Park on the east side of Shaws Bay is this waterfront , 2 bedroom 2 bath relocatable home .

Live permanently in this fabulous location. Set at the end of a small cul de sac in the Holiday Park this very private and stunning renovated home is a standout. Recently updated with all new appliances and quality finishes , this is a dream come true.

The main bedroom oozes calm sanctuary and the large ensuite is so stylish with shower and double vanity plus a freestanding bath and plenty of natural light.

The 2nd bathroom again is modern and well appointed with a generous vanity plus shower and toilet .

There is a butler's kitchen/ laundry with loads of floor to ceiling cupboard space and direct access to outside.

Along this side of the property is a vege garden and there is a gorgeous outdoor shower area , perfect for sandy feet or a rinse off from your early morning swim just in front of the property.

The main living area is spacious and filled with light. And the kitchen is open plan and enjoys stunning views to the water with amazing sunsets. Modern styling with plenty of soft close drawers and storage plus there is plenty of bench space and the two pac cabinetry and stone bench tops make for a designer kitchen.

Push back the double sliding doors and the wrap around deck offers lots of space to entertain or just sit and enjoy the view.

The second bedroom is stylish and separate from the living area. There is a covered carport with room for storage.

This type of living is a new way of having it all . An over 55 y/o tenancy , you own the home and lease the lot . You can live all year round in paradise with easy access to lots of flat walking trails, the beach, the bay and a short stroll to lovely restaurants or paddle to the pub!

Within the park there are many amenities for you and your visitors to enjoy. a pool and water activities , adventure playground for kids, gym , laundry , club house.

Grandkids will be wanting to stay longer in this ideal holiday destination with swimming, fishing and boating...all from your front door.

2 BED | 2 BATH | 1 CAR

PRICE:  
\$580,000

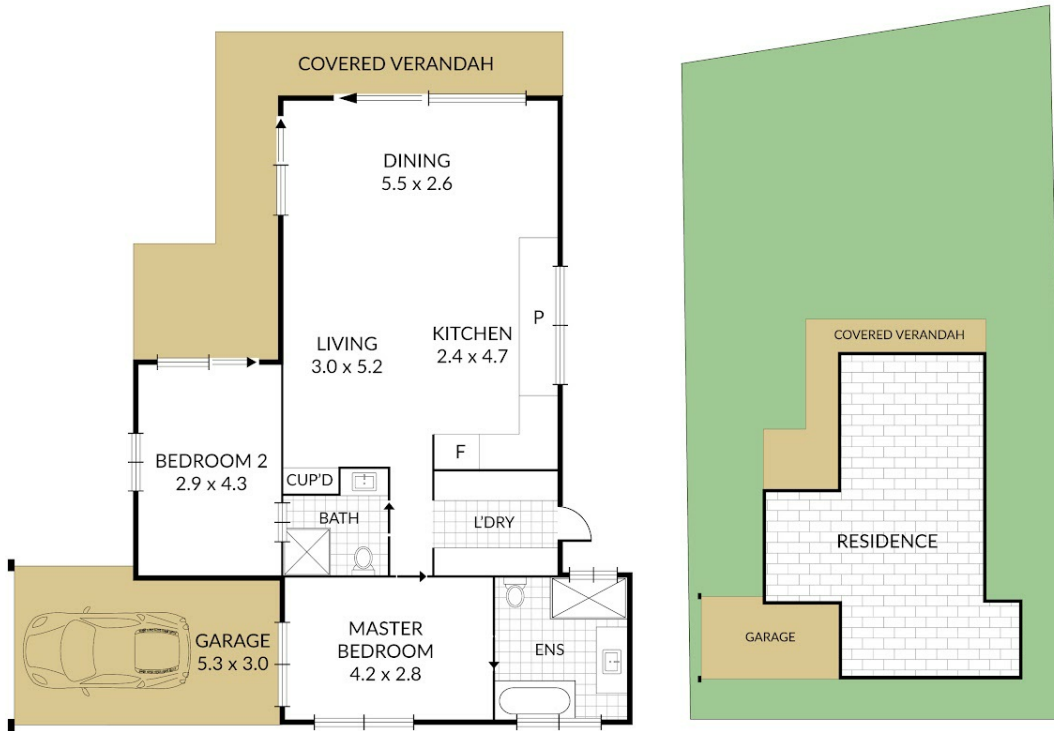
OPEN FOR INSPECTION:  
N/A



**Vicki Cooper**  
**0418231955**

vickicooper@atrealty.com.au

[www.vickicooper.com](http://www.vickicooper.com)



NOTE: Every precaution has been taken to verify the accuracy of the above details. However, prospective purchasers are advised to make their own enquiries.

Disclaimer: Please note this floor plan is for marketing purposes and is to be used as a guide only. All dimensions are estimates only and may not be exact measurements.