



SOLD

TWEED ULTIMA FURNISHED BEACH UNIT

If you are seeking a lifestyle change in a beach suburb then this could be the perfect place. Just pack a bag and move in, could be your ideal weekender or a great opportunity for the savvy investor. Situated on the fourth floor, the unit has a well sized layout with 1 bedroom, 1 bathroom, carpark and includes a stylish furniture package. Enjoy resort style living at its best plus all the conveniences of shopping, amazing restaurants, coffee shops and Twin Towns all within an easy walk. Tweed Heads NSW sits on the border with Coolangatta QLD at your doorstep, so it's living the best of both worlds.

KEY FEATURES

- Open plan living opening that flows out onto an oversized sun drenched patio
- The modern kitchen is an entertainers' delight, plenty of cupboards and stone bench tops
- Extra-large bedroom, built-in robes and can easily fit a king-size bed and opens out to balcony
- Separate stylish bathroom offers, shower, marble tops, European laundry, Ceiling fans throughout
- Balcony sliding shutters for additional space, privacy, or inclement weather
- 1 secure car space in basement
- On site pool, intercom and security access
- Easy walk to the cafes, bars, restaurants and beaches
- Contact Agent for a Outgoings - Fact Sheet

TWEED ULTIMA COMPLEX

- Enclosed sparkling lap pool
- Convention Centre
- Public Fitness Centre & Day Spa

If you can imagine yourself living here, call Gaylia Griffiths to arrange an inspection on 0419 879 037.

Disclaimer: We have in preparing this information used our best endeavours to ensure that the information contained herein is true and accurate but accept no responsibility and disclaim all liability in respect of any errors, omissions, inaccuracies, or misstatements that may occur. Prospective purchasers should make their own inquiries to verify the information contained herein.

1 BED | 1 BATH | 1 CAR

PRICE:
\$480,000

OPEN FOR INSPECTION:
N/A



Gaylia Griffiths
0419879037
gayliagriffiths@atrealty.com.au
www.atrealty.com.au

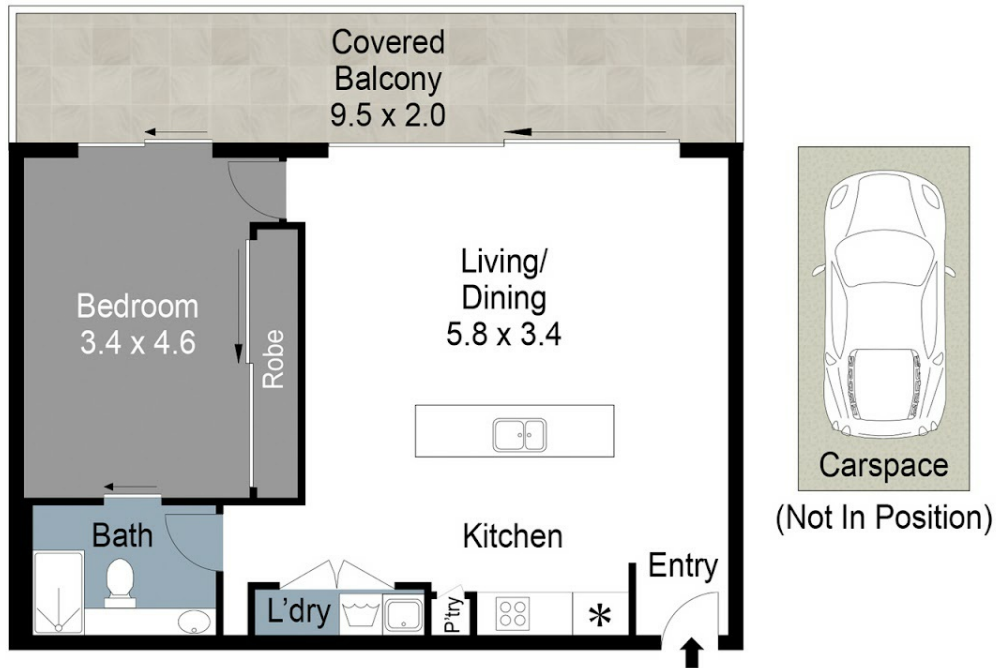
Gaylia Griffiths

0419 879 037

GayliaGriffiths@atrealty.com.au

NorthShore
Coastal

@realty



1046/20 Stuart Street, Tweed Heads

Internal: 65m² | External: 18m² | Carport: 14m² | Total: 97m²



While every endeavor has been made to verify the correct detail in this brochure, neither the Agent nor Seller or Contracted Illustrator accept liability for any error or omissions. Prospective buyers should make their own enquires and form their own judgement on this property.

Disclaimer: Please note this floor plan is for marketing purposes and is to be used as a guide only. All dimensions are estimates only and may not be exact measurements.

Gaylia Griffiths

0419879037

gayliagriffiths@atrealty.com.au

www.atrealty.com.au

@realty