



SOLD

IMPRESSIVE FAMILY HOME ON 1.5ACRES – DUAL LIVING OPTION

Presenting to the market this impressive Colonial Style 6 bedroom family home on 6,181m² of usable land. Positioned high on the block, overlooking the children and fur babies playing from the wrap around verandah it's easy to forget how close you are to the local IGA shopping complex which is within walking distance of this property. From the moment you walk in you will appreciate the polished timber floors and high ceilings that welcome you. This home comes with the added bonus of catering for a dual living situation with a self-contained, 2 bedroom residence having its own access. AND there's a POOL and a SHED!!!

Featuring 6 bedrooms, 4 living areas and 3 bathrooms spread over two levels giving you so many options with internal stairs that can be closed off this is the perfect home for a big family, a blended family, extended family or someone savvy wanting to do an Airbnb!

The opportunity exists to view this property before going to market so get in quick... don't delay call Natalie today on 0419689309.

At a Glance:

- Elevated 6,181m² block
- Wrap around Verandah, all bedrooms opening out onto
- Sparkling Salt Water Swimming Pool (New Sand Filter & Pump)
- Spacious Timber Kitchen with Island Bench
- Open Plan Living and Dining with Air-Conditioning
- Hardwood Polished Floors
- Soaring High Ceilings
- Master Suite with Ensuite, spa and shower, walk in robe
- All Bedrooms upstairs open onto the wrap around Verandah
- Internal Stairs
- Double Remote Garage
- 2 Bay Shed with Power & own Fuse Box
- Termite Barrier
- Solar Panels - 3.5KW
- Covered Entertaining area overlooking the pool
- Hidden Dog Fence – only 2yrs old
- Bitumen Driveway
- Town Water

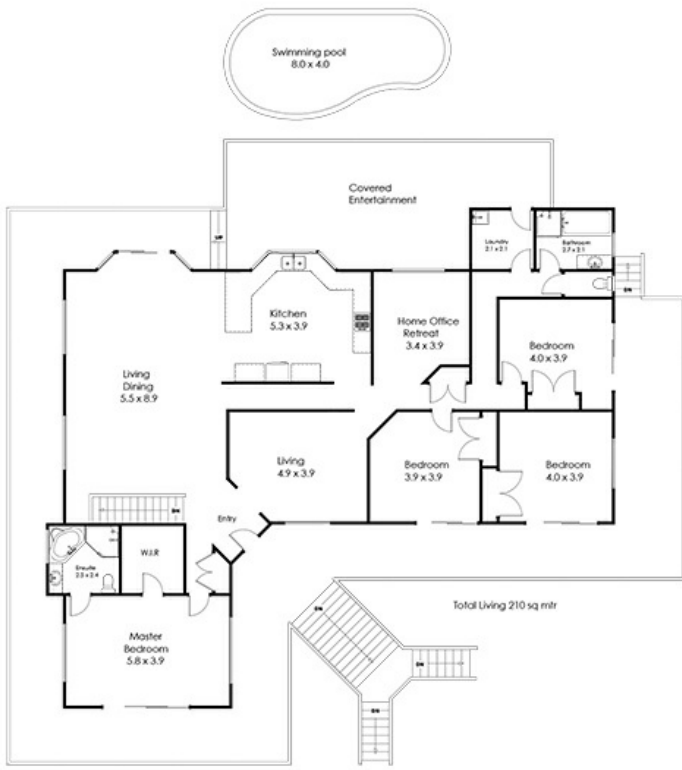
6 BED | 3 BATH | 6 CAR

PRICE:
\$1,310,000

OPEN FOR INSPECTION:
N/A



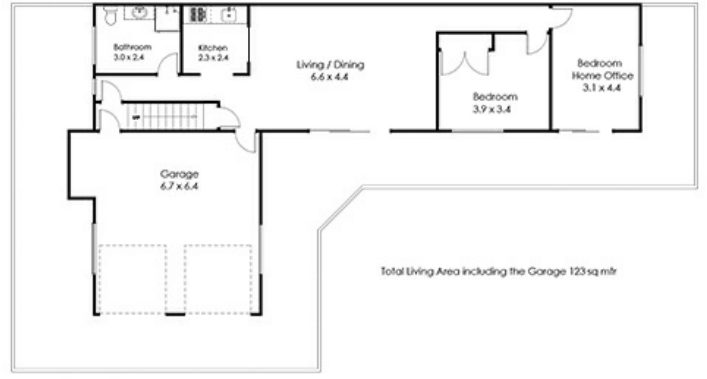
Natalie Johnston
0419689309
natalie@atrealty.com.au
[Natalieatrealty](#)



Top Level

Grand Total Living area including garage: 333 sqm

Whilst every attempt has been made to ensure the accuracy of the floor plan contained here, measurements of doors, windows rooms and any other items and structures are approximate and no responsibility is taken for any error, omission or mis-statement. Bathroom and kitchen fittings, cupboards and door types and laundry appliances and windows are tokens and approximate the actual fitting installed.
 This plan is for illustrative purposes and should be used as such by any prospective buyer.
 Plan drawn by Eagle Eye Photography Service, www.eagleeyehq.com.au Copyright 2022.
 All rights reserved.
 No reproduction without license, contact photographer for more information.



Ground Level

209 Lilley Road Cashmere 4500

Whilst every attempt has been made to ensure the accuracy of the floor plan contained here, measurements of doors, windows rooms and any other items and structures are approximate and no responsibility is taken for any error, omission or mis-statement. Bathroom and kitchen fittings, cupboards and door types and laundry appliances and windows are tokens and approximate the actual fitting installed.
 This plan is for illustrative purposes and should be used as such by any prospective buyer.
 Plan drawn by Eagle Eye Photography Service, www.eagleeyehq.com.au Copyright 2022.
 All rights reserved.
 No reproduction without license, contact photographer for more information.



Disclaimer: Please note this floor plan is for marketing purposes and is to be used as a guide only. All dimensions are estimates only and may not be exact measurements.

