



# SOLD

## UNDER CONTRACT BY CLARISSA ALSOP

This modern looking home is set across from a gorgeous park with a treed outlook and playground equipment. Why bother with the delays and hassles of building when this near new home is ready to move straight into.

- Built in 2019 by Home Group WA
- Set on a 450 sqm block
- 165 Sqm of living and 223 sqm of total area
- Ducted reverse cycle air conditioning
- Solar panels with 6.6 kw inverter for low household running costs
- Set opposite a park
- Rendered façade with feature lighting
- Large master suite with walk in robe and designer ensuite
- Spacious theatre room offers double doors for privacy and is the ideal place to relax
- Stunning kitchen will be the envy of friends with its large stone topped island bench, heaps of built-in storage including overhead cupboards, 900 mm freestanding oven and a dishwasher
- The real wow here is the scullery area, adjacent to the kitchen, that offers additional preparation space or room to store appliances and a space for an extra fridge or freezer
- Laundry is conveniently located in this area keeping all your utilities together
- Quality tiled floors thought and carpet for the bedrooms and theatre
- Led lighting throughout
- Large retaining wall to rear garden creates a private haven
- The outdoor entertaining area is fully decked and offers feature lighting
- Heaps of room for the kids or pets to run and play in the low maintenance rear garden
- Great location with the shopping centre, schools, parks, and transport links all within easy reach
- Minutes to stunning beaches and all the amenities that Mandurah has to offer
- All this set in a quiet location with freeway access minutes away and the new Lakelands train station which is due for completion in 2023.

4 BED | 2 BATH | 2 CAR

PRICE:  
\$455,000

OPEN FOR INSPECTION:  
N/A



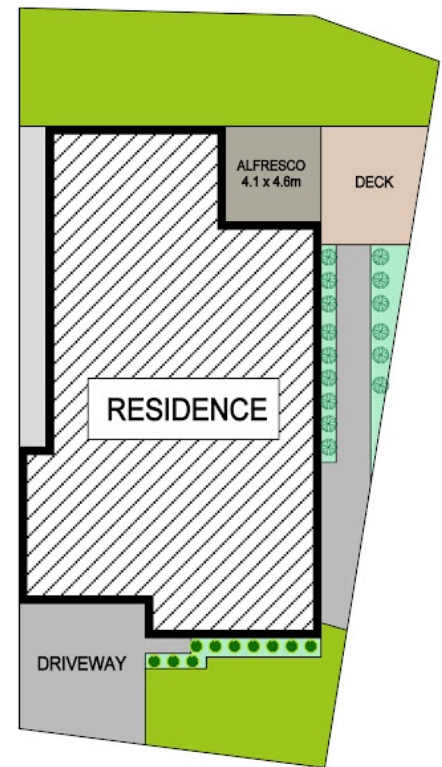
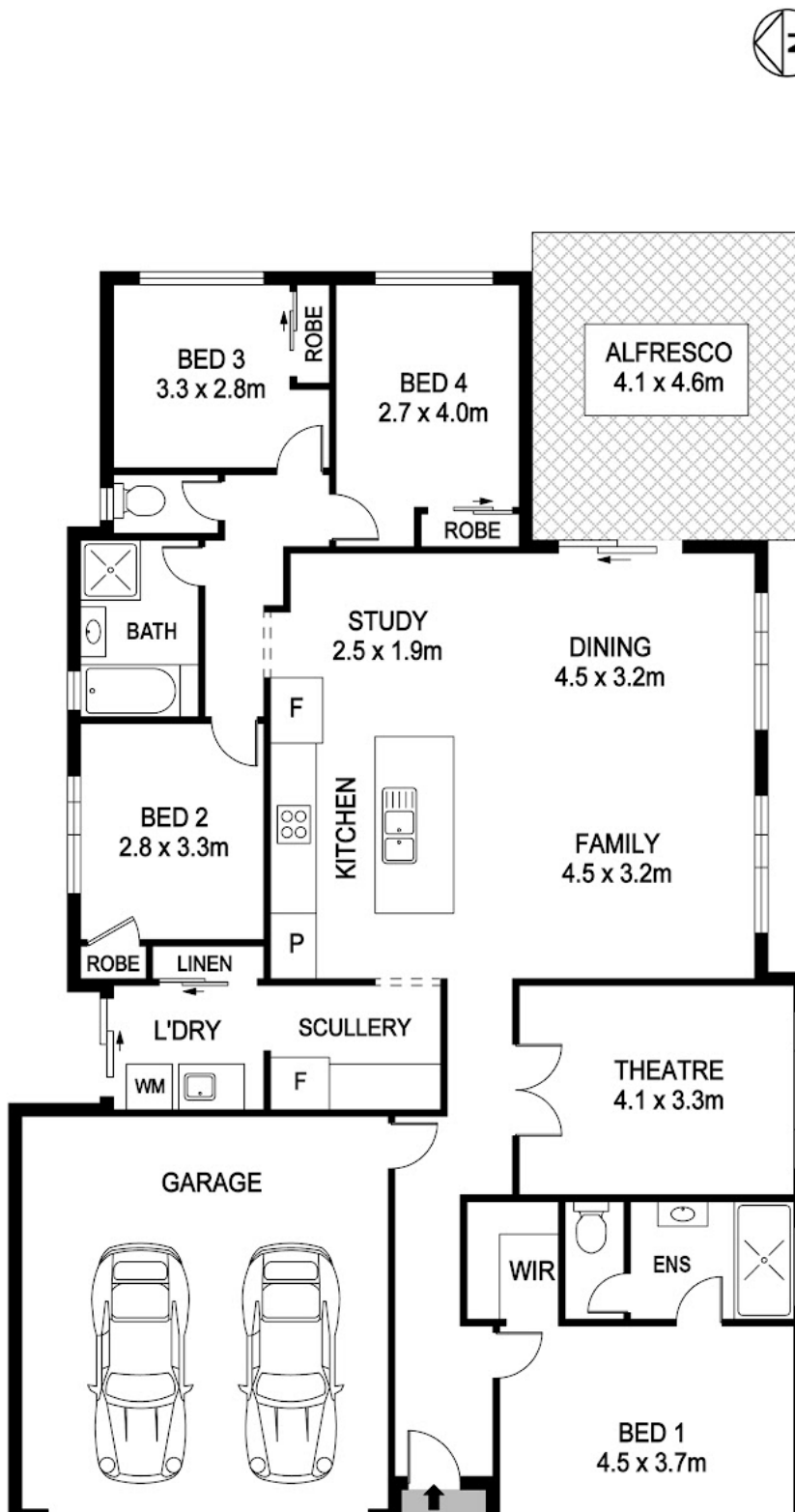
**Clarissa Alsop**  
0421827669  
clarissa@atrealty.com.au  
[www.atrealty.com.au](http://www.atrealty.com.au)

# 32 Dragonfly Blvd LAKELANDS



Block Size 450m<sup>2</sup> | 4 Bedrooms | 2 Bathrooms | 2 Car  
Internal 165m<sup>2</sup> | External 58m<sup>2</sup> | Total 223m<sup>2</sup>

Clarissa Alsop | 0421 827 669



Disclaimer: Please note this floor plan is for marketing purposes and is to be used as a guide only. All dimensions are estimates only and may not be exact measurements.



REAL ESTATE FLOOR PLANS | [houseguru.com.au](http://houseguru.com.au) | © House Guru Real Estate Photography™

Whilst every attempt has been made to ensure the accuracy of the floor plan contained here, measurements of doors, windows, rooms and any other items are approximate and no responsibility is taken for error, omission or mis-statement. This plan is for illustrative purposes only and should only be used as such by any prospective purchaser. The services systems and appliances shown have not been tested and no guarantee as to their operability or efficiency can be given.

**Clarissa Alsop**  
0421827669  
[clarissa@atrealty.com.au](mailto:clarissa@atrealty.com.au)  
[www.atrealty.com.au](http://www.atrealty.com.au)

