

SOLD

SOLD IN 3 DAYS

For more detailed information visit the dedicated property website at 20bluewater.com

The Open Negotiation is underway and the property can sell at any time.

Contact the agent immediately to become qualified and avoid disappointment. Open to all buyers, including finance, subject to seller approval.

The ultimate in low maintenance coastal living with fabulous space to entertain inside and out, this is the perfect family escape less than two hours from the city! Moments from the new surf life saving club, Cape Tavern and general store, you'll love the oceanside lifestyle the 'Cape' is famous for with nearby Inverloch, Wonthaggi and Wilsons Promontory providing plenty of things to do and see from your new South Gippsland holiday base.

Offering four bedrooms, two bathrooms, bamboo floors and stunning contemporary style, holiday or permanent living has never been so good. Huge undercover north facing decks lead out from the living areas to the stunning views beyond and provide year round comfort in all weather conditions.

The sun, the sand and the sea - it's yours for the taking in absolute style, comfortably accommodating more than one family and barely 200m from the water's edge! Be quick and experience the best of Cape Paterson.

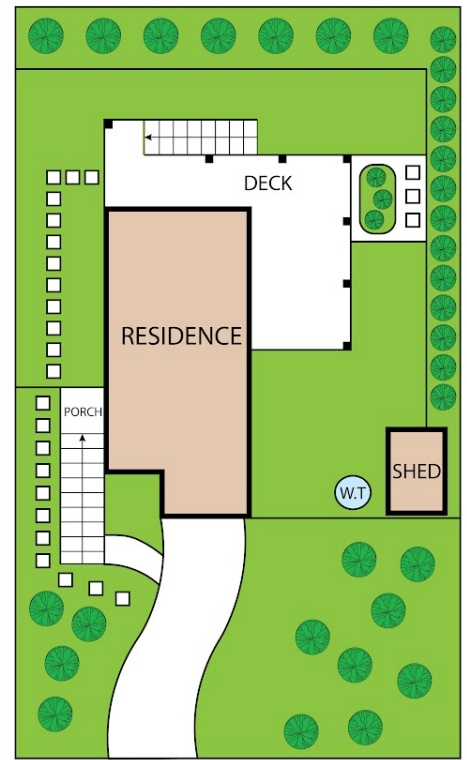
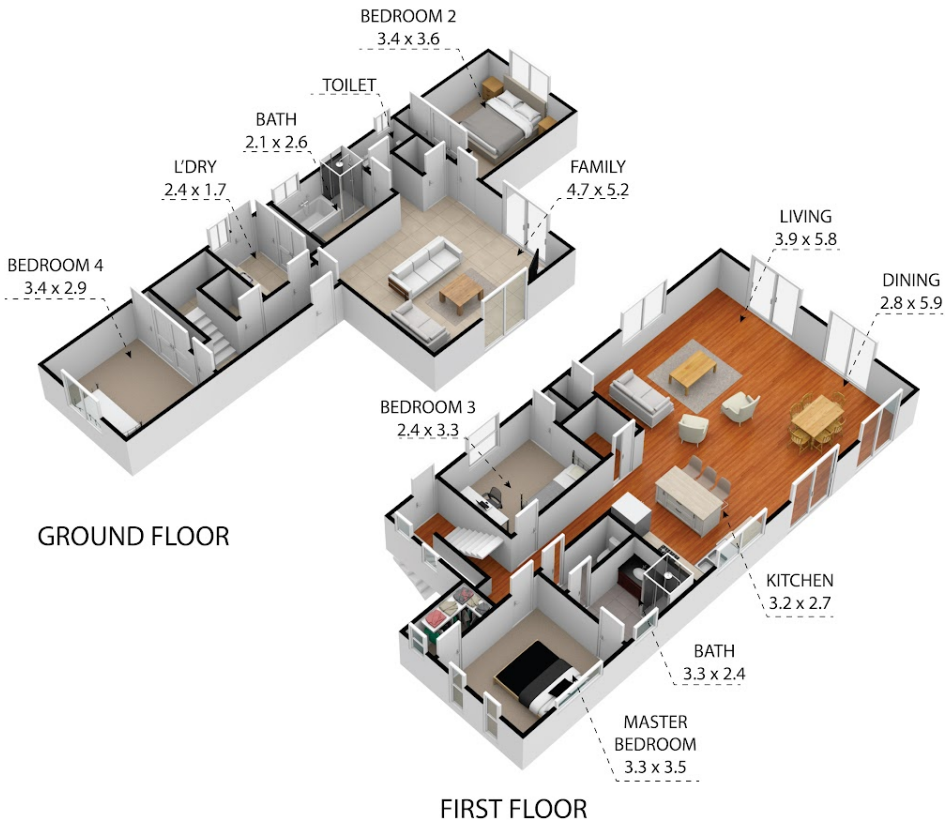
4 BED | 2 BATH | 2 CAR

PRICE:
\$1,250,000

OPEN FOR INSPECTION:
N/A



Leo Edwards
0472523445
leo@atrealty.com.au
www.atrealty.com.au



20 Blue Water Circle, Cape Paterson 3995
TOTAL APPROX. FLOOR AREA 175 SQ.M

Whilst every attempt has been made to ensure the accuracy of the floor plan contained here, measurements of doors, windows, rooms and any other items are approximate and no responsibility is taken for any error, omission, or misstatement. This plan is for illustrative purposes only and should be used as such by any prospective purchaser.

INVERLOCH
REALTY

@realty

Disclaimer: Please note this floor plan is for marketing purposes and is to be used as a guide only. All dimensions are estimates only and may not be exact measurements.

Leo Edwards
0472523445
leo@atrealty.com.au
www.atrealty.com.au

@realty