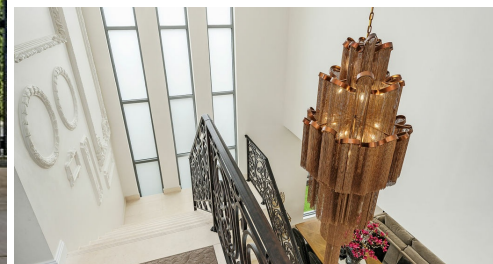


58A WATTLE ROAD, CASULA, NSW, 2170



SOLD

MODERN TECH SAVVY FAMILY HOME WITH SLEEK INTERIORS

Features Include:

- Front porch overlooks the enclosed front yard
- Five generally proportioned bedrooms
- Master suite includes a large walk in robe & ensuite
- Study
- Double wrought iron balustrade front doors lead into the formal lounge room
- Expansive family room includes built in TV nook
- Built in gas fireplace
- Dining room
- Stunning kitchen is equipped with ample cupboard & bench space
- Stone waterfall benchtops
- Blum electric touch to open drawers
- Blum soft closing drawers
- Gas cooking
- Dishwasher
- Pantry
- Island bench breakfast bar overlooking the family room
- Sitting room upstairs
- Bright & airy bathroom equipped with a unique classic freestanding bathtub, floating vanity & floor to ceiling tiles
- Third toilet located downstairs
- Laundry includes built in cabinetry, Wrought iron balustrade door, floor to ceiling tiles & backyard access
- Internal storage
- Ducted air conditioning throughout
- Smart light switches
- WiFi alarm system
- Natural stone tiles throughout
- Outdoor entertaining alfresco includes electric blinds allowing the room to be used in all weather conditions & is equipped with built in cabinetry & a ceiling fan
- Low maintenance yard
- Double garage with remote & internal access

5 BED | 2 BATH | 2 CAR

PRICE:

\$1,300,000

OPEN FOR INSPECTION:

N/A

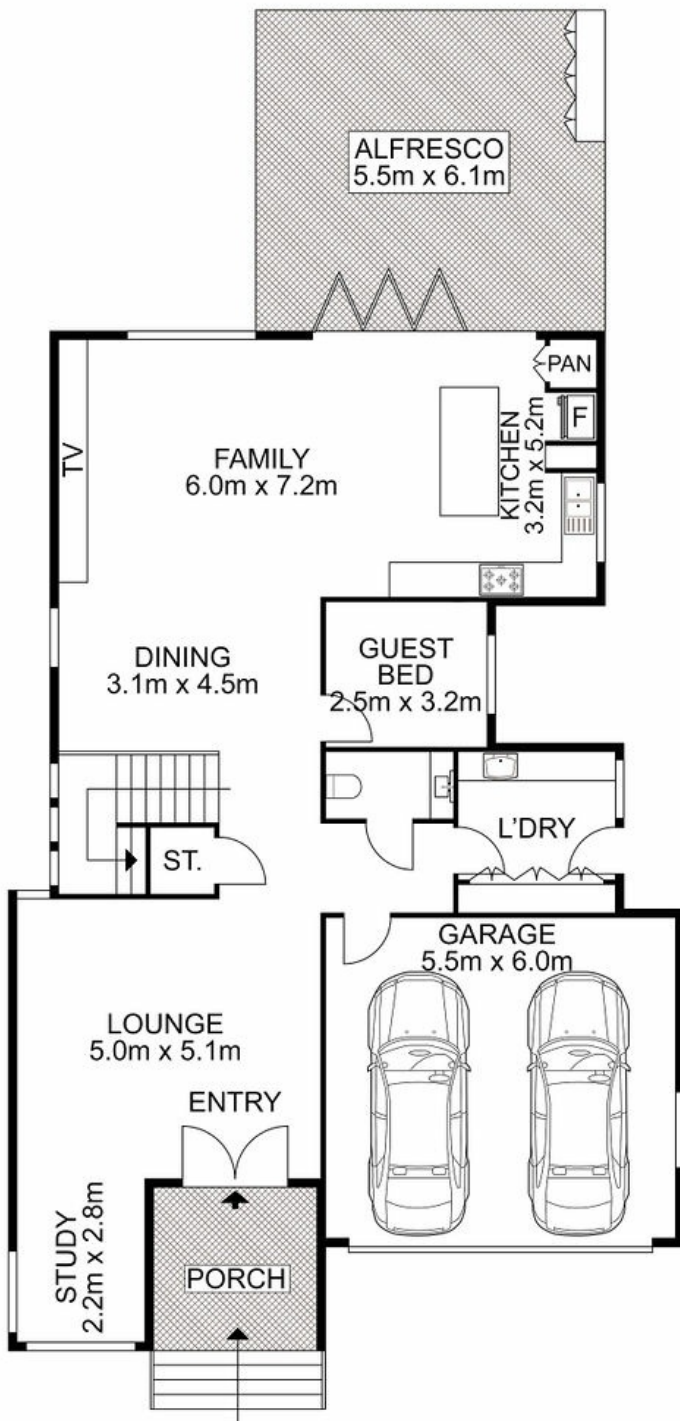


Huss Al Salemi

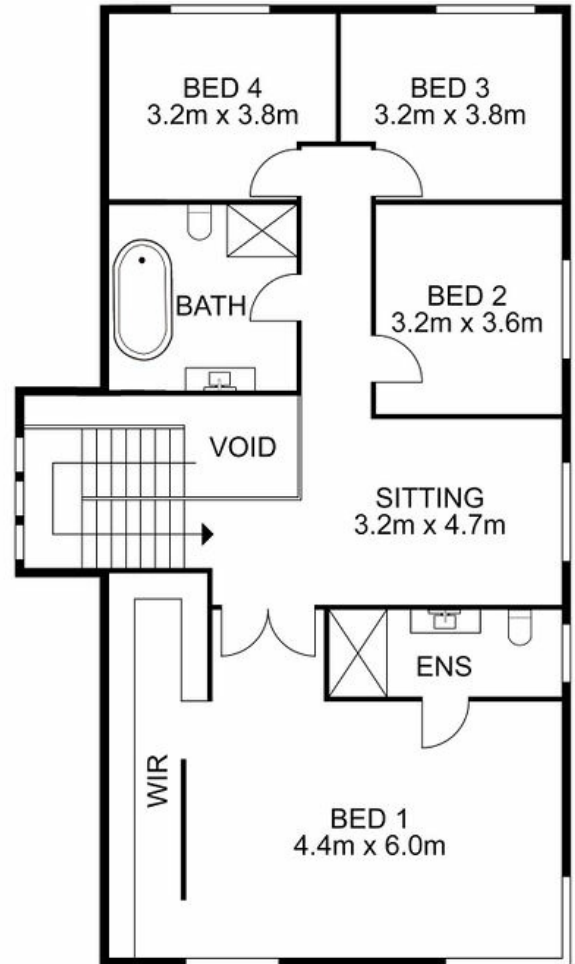
0411699419

huss@atrealty.com.au

www.agencycentral.com.au



ENTRY LEVEL



UPPER LEVEL