



# FOR SALE

## UNRIVALLED CONVENIENCE, SPECTACULAR CITY VIEWS

Located right in the heart of the city, with all the iconic attractions at its doorstep, offering the ultimate inner-city lifestyle. A leisurely stroll to the esplanade, lagoon, marina, restaurants and cafes.

Piermonde offer a 24/7 onsite holiday management service who currently manage this property until the 30.6.2023, after which you can move into and owner occupy.

Located on the 7th floor capturing stunning views of the mountains, city and water inlet, an enchanting panorama at sunset.

A generous 150m2 open plan design capitalising on the views with floor to ceiling glass windows, doors and balustrading. A very spacious entertaining balcony for all your family and friends.

Central well-appointed kitchen with granite benchtops, Franke gas stove and wall oven. Two good sized bedrooms, the master with spa bath, walk in wardrobe and balcony. Complete with laundry, split system air-conditioning, fans and Wi-Fi.

Enjoy the outdoor sun-soaked spa, pool and BBQ area while overlooking the city and taking in the beautiful sunset and sunrise.

The secure complex has 2 elevators and secure undercover allocated parking for 2 cars.

Council rates \$2,600 pa approx  
Body corporate fees \$11,000 pa approx

2 BED | 2 BATH | 2 CAR

### PRICE:

Mid - High \$600,000's

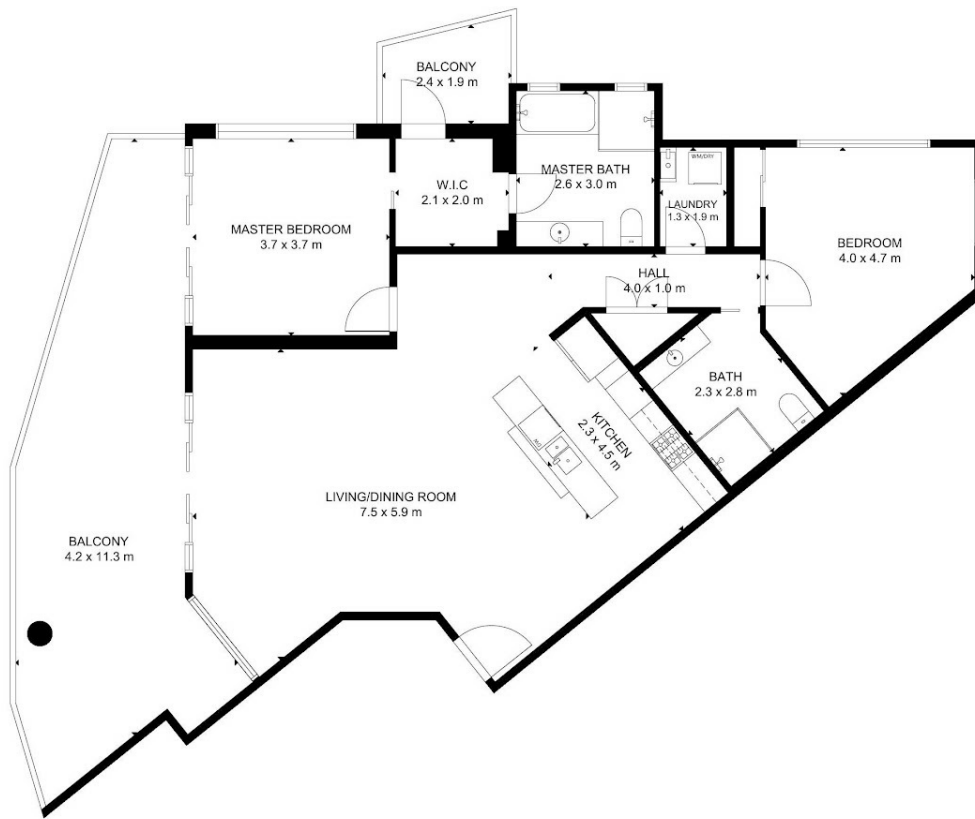
### OPEN FOR INSPECTION:

N/A



**Zoe Wicks**  
**0477114778**

zoewicks@atrealty.com.au  
[www.atrealty.com.au](http://www.atrealty.com.au)



FLOOR 1

SIZE AND DIMENSIONS ARE APPROXIMATE, ACTUAL MAY VARY.

Zoe Wicks | @realty  
Real Estate

Disclaimer: Please note this floor plan is for marketing purposes and is to be used as a guide only. All dimensions are estimates only and may not be exact measurements.