



Sold

15 HULL COURT, GROVEDALE, VIC, 3216

3  | 2  | 2 

GREATERMETRO
Real Estate



FIRST TIME OFFERED: AN EXCEPTIONAL VALUE FAMILY HOME

PRICE: \$600,000

OPEN FOR INSPECTION:
N/A

The Openn Negotiation has started (auction held online with flexible terms for qualified buyers). The property can sell at any time. Contact Adam El Adam immediately to become a qualified bidder and avoid missing out.

Tucked away in a quiet court, elevated and brimming with light, this property occupies approx. 648m² of land and presents buyers with endless possibilities whether you are dreaming of breaking into the property market, searching for a terrific investment opportunity or have plans to renovate or re-develop the land (STCA).

Located within moments from popular primary and secondary schools, Deakin University, local shopping, the Waurn Ponds Leisure and Aquatic Centre. Not far from the Ring Road, jump in your car, and you'll soon be in the heart of Geelong, exploring the delights of the Surf Coast, or an easy drive into Melbourne.

The home, nestled between landscaped gardens, presents a spacious living offering with a light-filled and spacious formal lounge with Rinnai heating, accompanied by a well-appointed kitchen and meals, Sunroom or second living room. With 3 large bedrooms with BIR's, including the Master with an ensuite, a spacious central bathroom with separate shower, laundry, two toilets this would make a lovely family home.

Flexible and versatile for an active outdoor lifestyle, the rear yard is designed for entertaining with a paved BBQ area to one side and a swimming pool to the other. With two garden sheds and undercover car accommodation this home provides the space to grow and create memories.

Adam El Adam // 0449 650 320




adam@greatermetro.com.au // www.greatermetro.com.au

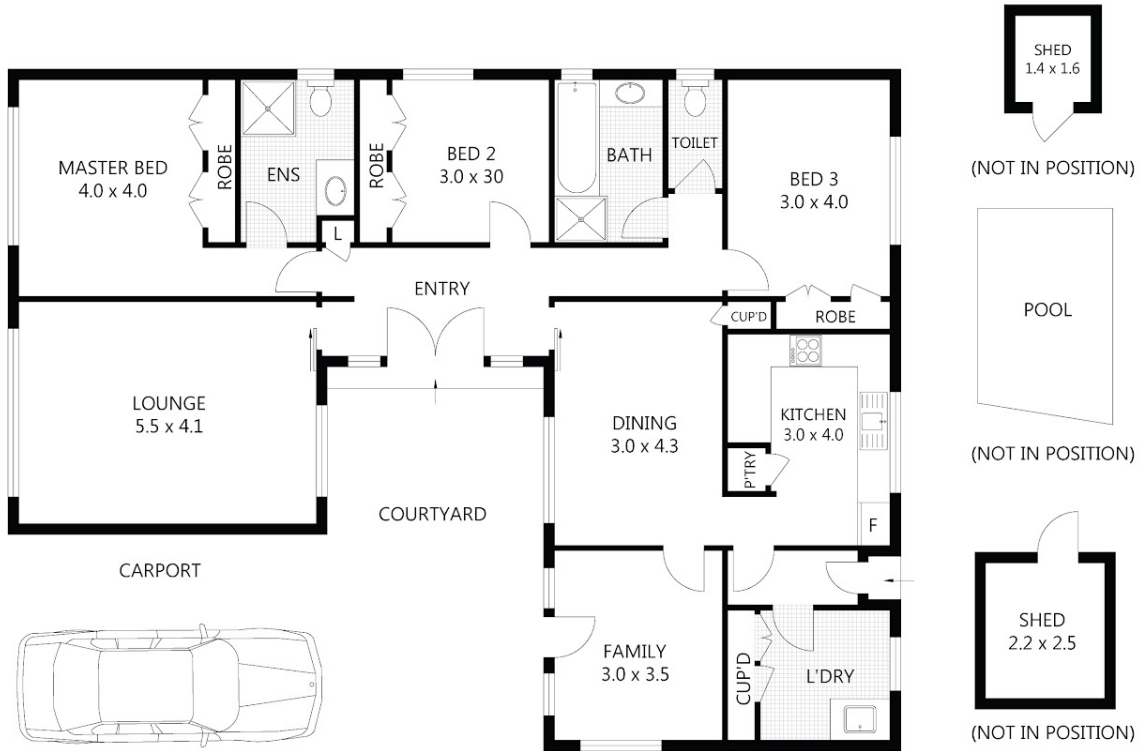


Sold

15 HULL COURT, GROVEDALE, VIC, 3216

GREATERMETRO
Real Estate

3  | 2  | 2 



Scale in metres. Indicative only. Dimensions are approximate. All information contained herein is gathered from sources we believe to be reliable. However we cannot guarantee its accuracy and interested parties should rely on their own enquiries.

RESIDENCE	-	143m ²
CARPORT	-	30m ²
COURTYARD	-	28m ²
SHED	-	8m ²
TOTAL AREA	-	209m ²

15 Hull Court, Grovedale



Adam El Adam // 0449 650 320

adam@greatermetro.com.au // www.greatermetro.com.au