

FOR SALE

ANOTHER ONE SOLD, BY JOCELYN MARRIAN

The feeling of space and abundance flows through every aspect of this exquisite home. From the moment you enter this beautiful home, the sheer size will amaze you! Offering 5 large sized bedrooms and 4 living areas it's the perfect home for a large family or perfect entertainer. This property is a rare gem. If you are looking for a home that nurtures your abundant lifestyle then Welcome Home!

There is so much on offer:

- 5 Bedrooms most with built-in wardrobes, Main bedroom complete with modern ensuite, walk in robe.
- Exquisite kitchen with stainless steel appliances including dishwasher, 900mm 5 burner gas cooker with massive bench space/ breakfast bar and extra pantry space, built in water filter under sink.
- Impressive spacious main bathroom with deep bath.
- Open plan kitchen, family and rumpus area with modern décor overlooking a spectacular large alfresco decking area offering a tropical hideaway feeling privacy screening, Tranquil and leafy back yard and gardens with waterfall feature and fish pond creating a delightful sanctuary ideal for some quiet time away from the stresses of life or the perfect party entertaining space with friends and family.

Other features include.

- security system, downlights, ducted Air, separate electricity and hot water solar system, large water tank with grey water system, bamboo flooring, separate court yard off the kitchen, Double garage with remote, with internal access
- this 10-year young Allworth home has been built to last with extra peers to stabilise the slab and built-in termite treatment.

Representing the executive lifestyle, you have been looking for, this property is a must see! Make it a priority and give me a call today: Jocelyn Marrian 0405 164 446.

5 BED | 2 BATH | 2 CAR

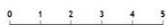
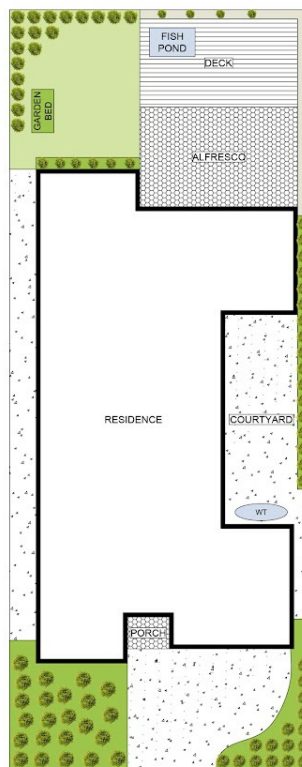
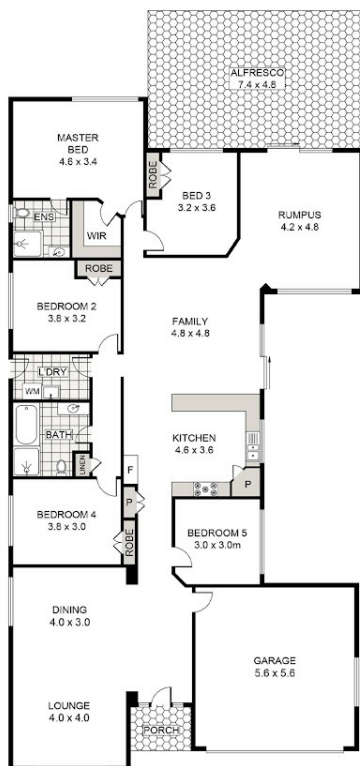
PRICE:
\$920,000

OPEN FOR INSPECTION:
N/A



Jocelyn Marrian
0405164446

jocelynmarrian@atrealty.com.au
Jocelyn Realty



14 BRADMAN ROAD, SHALVEY



Disclaimer - This plan has been drafted from supplied information and is provided as an indicative representation only. No liability is accepted by the agency or the vendor on its accuracy. Interested parties should make their own enquiries. Not to scale.

Disclaimer: Please note this floor plan is for marketing purposes and is to be used as a guide only. All dimensions are estimates only and may not be exact measurements.