

**SOLD**

## BEST VALUE 2 BEDROOM APARTMENT IN SILVERSHORE !

Enjoy Broadwater living at its best in this 3rd level – 2nd floor contemporary apartment, offering peace, privacy and seclusion. This great apartment is flooded with natural light but offers privacy among the trees. Such a tranquil feeling.

Silvershore is situated opposite the sandy Broadwater foreshore.

The spacious open plan living/dining area, leads out to a generous private balcony that is ideal for entertaining or to simply sit back, relax with a glass of wine. The modern entertainer's kitchen has mirrored splash backs, stainless steel appliances - gas cooktop & dishwasher and stone bench tops. Plus, has ample space to install a massive kitchen island if wanted.

The Master bedroom leads directly out to the spacious balcony via floor to ceiling, stacking patio door and walk thru wardrobes to the 2 way/en-suite bathroom.

Bedroom 2 has windows looking to the surrounding trees for added privacy. Being an end unit there are windows in the second bedroom and bathroom.

This modern apartment is positioned on Marine Parade with direct access to the Broadwater, walkways and parks and is only a stroll to restaurants and cafes, amenities and shops, Easy access to Griffith University, Gold Coast University Hospital, and Runaway Bay Shopping Centre and Harbour Town for outlet shopping. The building has recently been repainted inside and out and has fantastic on-site managers and a low body corp.

The perfect apartment for home or investment. You can stay when it suits you and holiday let if you wanted to or live in or rent out permanently - the choice is yours.

### Apartment Features

- Modern kitchen + large island bench
- Tiled floor through kitchen and bathroom + carpets to living and bedrooms
- European laundry
- Ducted and zoned air-conditioning throughout

2 BED | 1 BATH | 1 CAR

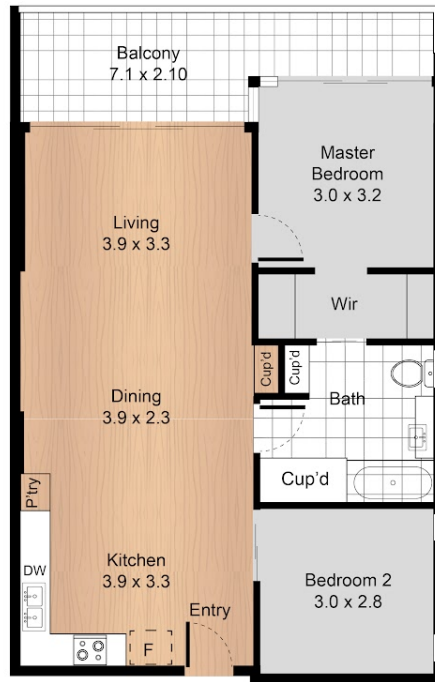
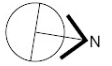
PRICE:  
\$502,000

OPEN FOR INSPECTION:  
N/A



**Francine Setchell**  
**0408143464**  
francine@atrealty.com.au  
[www.atrealty.com.au](http://www.atrealty.com.au)

# FLOOR PLAN



**309/430 Marine Parade,  
Biggera Waters 4216**

2 Bed 1 Bath

Internal: 66m<sup>2</sup>  
External: 11m<sup>2</sup>



All information contained herein is gathered from our 3D scanned tours via Matterport. Whilst the 3D scanning technology is very accurate we cannot guarantee its accuracy and interested parties should rely on their own enquiries.

Disclaimer: Please note this floor plan is for marketing purposes and is to be used as a guide only. All dimensions are estimates only and may not be exact measurements.