

60 WUNBURRA CIRCLE, PACIFIC PINES, QLD, 4211



Sold by Tony Brown @realty



0418 961 500



SOLD

FAMILY PERFECT

OPEN HOUSE CANCELLED

When it comes to family homes it doesn't get much better than this. Not only do you have the four bedrooms, ensuite, family and media rooms plus double garage, you are also next to a fantastic park, it's like having your own huge back yard. Easy maintenance flat 605m2 block in the family perfect Pacific Pines. This home sits in the Park Lake State School zone and Pacific Pines State High precinct. Local shopping includes supermarkets, take away, medical, dental and pharmacy and short distance away is Westfield Helensvale. To top it off, the home is recently painted inside and has all new carpets.

- 4 generous bedrooms
- Ensuite to main.
- Separate laundry with outside access.
- Tiled family room
- Media room
- Modern kitchen with stone benchtops and glass splashback
- Double garage
- Fans

DON'T MISSOUT, THESE HOMES DONT LAST.

Disclaimer:
We have in preparing this advertisement used our best endeavours to ensure the information contained is true and accurate, but accept no responsibility and disclaim all liability in respect to any errors, omissions, inaccuracies or misstatements contained. Prospective purchasers should make their own enquiries to verify the information contained in this advertisement. Some or all photos may be enhanced in the advertisement.

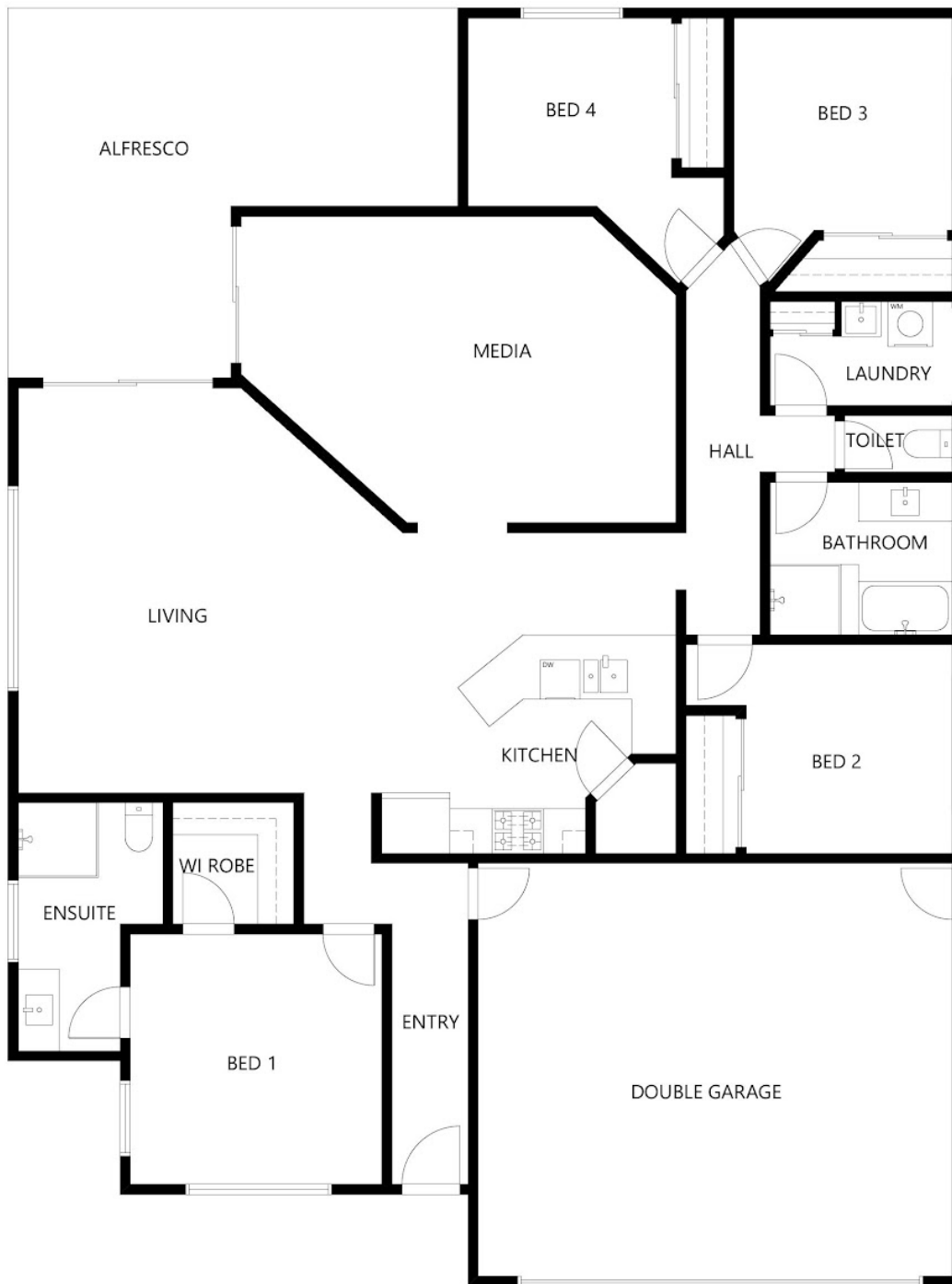
4 BED | 2 BATH | 2 CAR

PRICE:
\$730,000

OPEN FOR INSPECTION:
N/A



Tony Brown
0418961500
tonybrown@atrealty.com.au
www.atrealty.com.au



[]Ground floor

60 Wunburra

Floor plan is provided as indicative layout only. Measurements are not available, floor plan is not to scale. No guarantees



Disclaimer: Please note this floor plan is for marketing purposes and is to be used as a guide only. All dimensions are estimates only and may not be exact measurements.