



SOLD

SPACIOUS FAMILY HOME WITH TWO DOUBLE GARAGES

This is a lovely spacious home built on an 819 sqm block in 2002 by Mark Wust Constructions. This spacious home has two large double garages, one double with internal entry and one double with drive through access, so ideal to hide away the toys, boats, campers etc. Bring it all!

The home has four spacious bedrooms, separate carpeted lounge room, open plan family/dining/kitchen and an enclosed additional living/entertainment area. The king-sized master bedroom has a walk-in wardrobe, en-suite bathroom (with double shower) and sliding doors leading out to the indoor/outdoor entertainment area. The other three bedrooms are spacious with built-in wardrobes and separated from the master. Overlooking the salt water swimming pool is a large private covered entertainment area which can be made into a massive indoor/outdoor area with the sliders. A great place to relax and entertain family and friends. Look at these additional features:

- Reverse cycle air-conditioning
- Ceiling fans in every room
- Large separate drive-through garage/shed
- Large garden shed
- Slimline water tank and spear pump
- Pool pump house
- Established vegie gardens, easy care hardy gardens & fruit trees

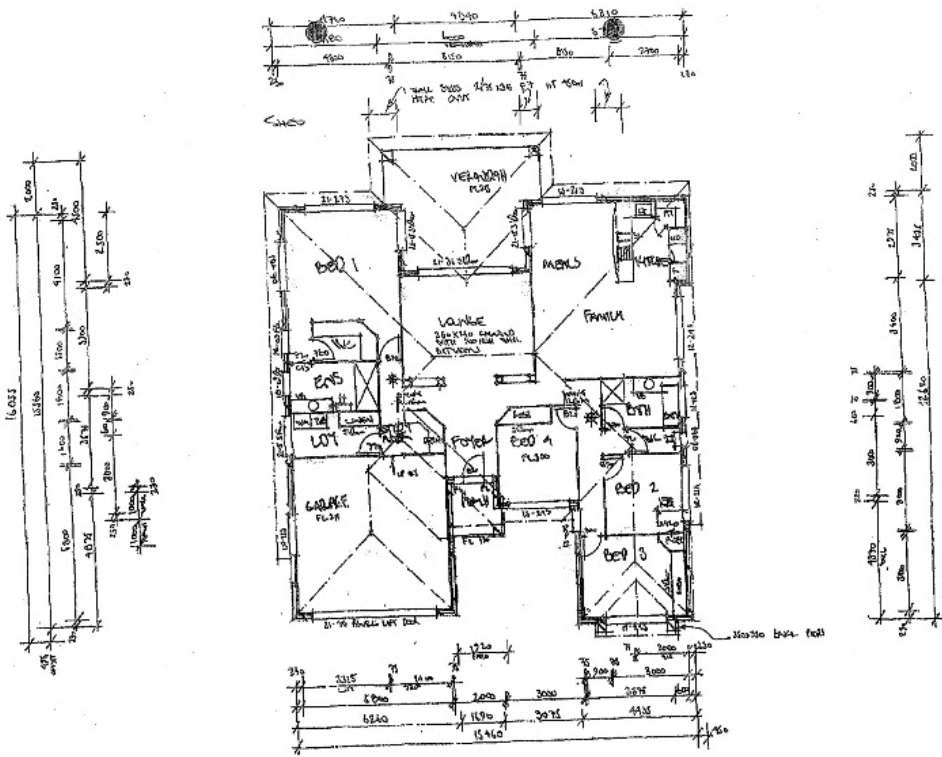
4 BED | 2 BATH | 4 CAR

PRICE:
\$915,000

OPEN FOR INSPECTION:
N/A



Geoff and Rose Tutt
0414230130
geoff@atrealty.com.au
www.atrealty.com.au



Disclaimer: Please note this floor plan is for marketing purposes and is to be used as a guide only. All dimensions are estimates only and may not be exact measurements.