

**SOLD**

## LARGE 4 BED PLUS STUDY!

Positioned on a generous 799m2 block, this modern 4 (Very Generous Sized) Bedroom PLUS Study lowset family home is the answer all buyers have been seeking before the Christmas Holidays rush begins. In the Highly sought after Halpine Estate, this property is surely not one to be missed!

Fantastic attention to detail - this family friendly layout offers a generous indoor/outdoor flow, and a truly Masterful Kitchen - perfect for the chef of the home and is just minutes from local shops, Primary and Secondary schooling, Public transport facilities, local Restaurants, and has easy Highway access.

### Features Include:

- Open Plan Kitchen with Near new appliances and Stone Benchtops, Dishwasher and Extra Large Fridge space
- Master Bedroom with carpeted flooring, Air-Conditioning, Ceiling fan, Walk in Robe, and ensuite complete with Huge Shower and two massive shower heads.
- An additional carpeted 3 bedrooms, all with Air-Conditioning, built-in wardrobes and ceiling fans.
- Separate Study/Office - perfect for those who work from home. Also, able to be closed off separately for complete privacy with Main Bathroom and Toilet access.
- 6KW Solar Panels plus Solar Hot Water
- Covered Outdoor Entertaining that wraps around the Living area
- Double Garage with Remote Access and Double Carport
- Cul-de-sac Street with no through traffic

### Handy Location to:

- Grace Court Park, 250m
- Mango Hill Train Station, 550m
- North Lakes Hospital, 1.5km
- Mango Hill State School, 1.7km
- Westfield North Lakes Shopping Centre, 1.8km (shorter distance using walking tracks)
- The Lakes College, 1.9km

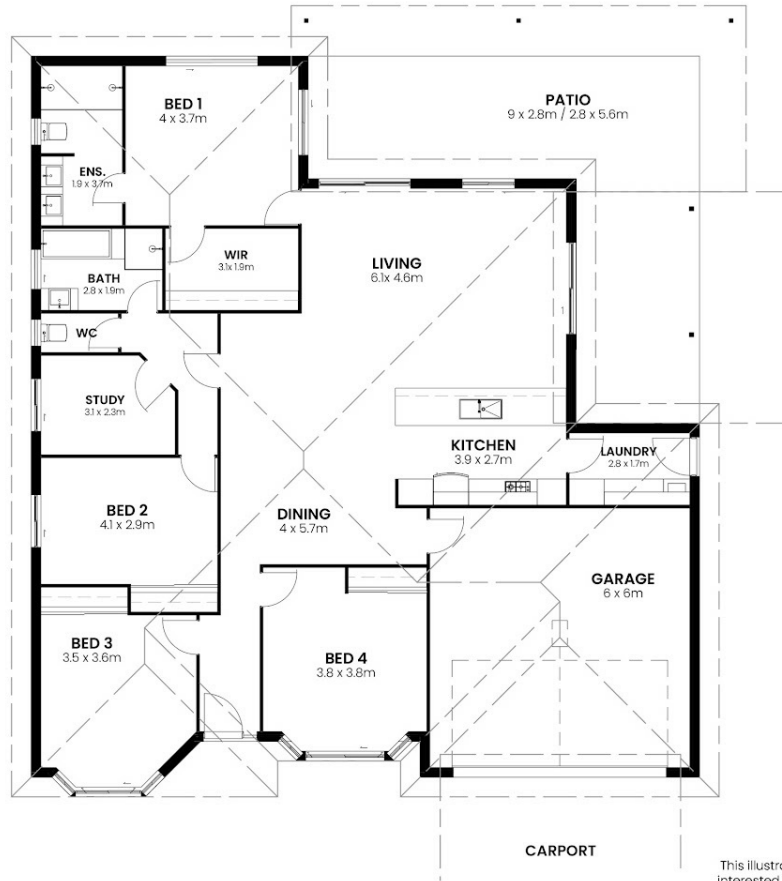
**4 BED | 2 BATH | 4 CAR**

**PRICE:**  
**\$815,000**

**OPEN FOR INSPECTION:**  
**N/A**



**Phill Healey**  
**0414452244**  
phill.healey@atrealty.com.au  
[www.atrealty.com.au](http://www.atrealty.com.au)



Areas	
LIVING	211m <sup>2</sup>
PATIO	41m <sup>2</sup>
<b>Overall</b>	<b>252m<sup>2</sup></b>

DISCLAIMER

This illustration has been drawn accurately. However, interested parties should consult official architectural drawings for specificity regarding areas and dimensions.

Disclaimer: Please note this floor plan is for marketing purposes and is to be used as a guide only. All dimensions are estimates only and may not be exact measurements.