

**SOLD**

## UNDER CONTRACT BY CLARISSA ALSOP

Be impressed by this freshly updated family home in a sought-after pocket of Madora Bay. This quality home has nothing for you to do, except unpack and start relaxing. This home offers a large floorplan with separate living areas and a low maintenance lifestyle.

- Built by Blueprint homes in 2015
- Set on a 450 sqm block
- 184 sqm of living and 242 sqm of total area (approx.)
- Newly rendered façade is fresh and coastal
- Ducted evaporative air conditioning
- Floating floors throughout with skirting boards
- Large theatre room is the ideal place to watch the latest movie
- Spacious master suite with walk in robe and modern ensuite
- Central kitchen is galley style and offers a large island bench
- Open plan family and dining rooms
- All minor bedrooms are queen size and offer double sliding robes
- Walk in store-room
- Modern family bathroom with separate toilet
- Alfresco under main roof has been fully enclosed
- Low maintenance rear yard with reticulation and garden shed
- This one is ready for you to move straight in

Great beachside location with near new homes surrounding and parks, shopping and schools all within easy reach.

**4 BED | 2 BATH | 2 CAR**

**PRICE:**  
**\$465,000**

**OPEN FOR INSPECTION:**  
**N/A**



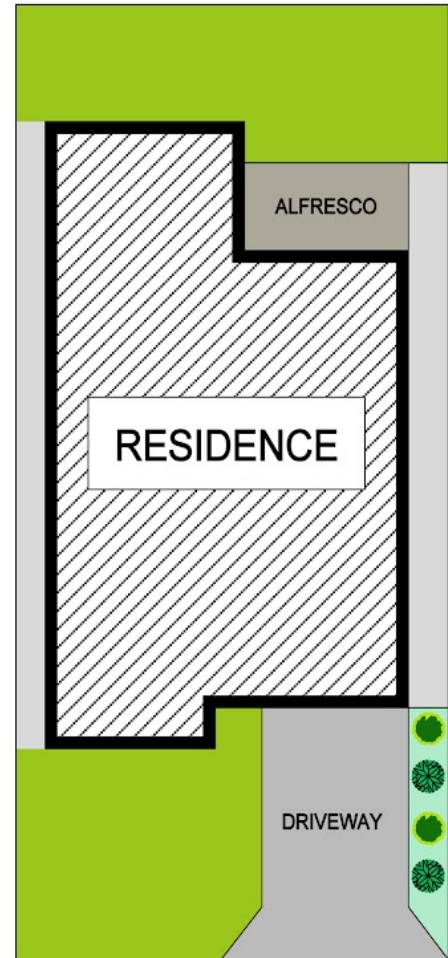
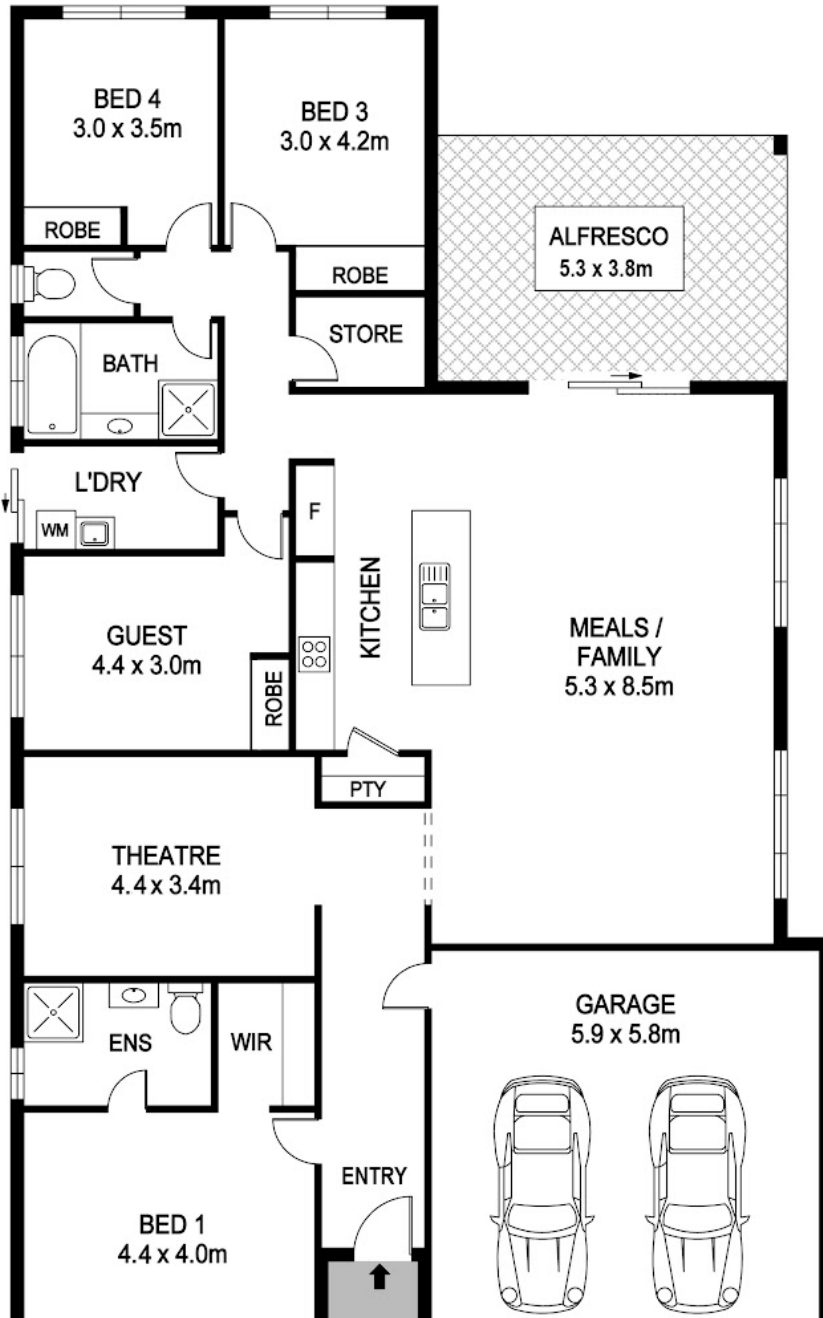
**Clarissa Alsop**  
**0421827669**  
clarissa@atrealty.com.au  
[www.atrealty.com.au](http://www.atrealty.com.au)

# 62 Arrawatta MADORA BAY



Block Size 450m<sup>2</sup> | 4 Bedrooms | 2 Bathrooms | 2 Car  
Internal 184m<sup>2</sup> | External 58.4m<sup>2</sup> | Total 242.4m<sup>2</sup>

Clarissa Alsop | 0421 827 669



Disclaimer: Please note this floor plan is for marketing purposes and is to be used as a guide only. All dimensions are estimates only and may not be exact measurements.



REAL ESTATE FLOOR PLANS | [houseguru.com.au](http://houseguru.com.au) | © House Guru Real Estate Photography™

Whilst every attempt has been made to ensure the accuracy of the floor plan contained here, measurements of doors, windows, rooms and any other items are approximate and no responsibility is taken for error, omission or mis-statement. This plan is for illustrative purposes only and should only be used as such by any prospective purchaser. The services systems and appliances shown have not been tested and no guarantee as to their operability or efficiency can be given.

**Clarissa Alsop**  
0421827669  
[clarissa@atrealty.com.au](mailto:clarissa@atrealty.com.au)  
[www.atrealty.com.au](http://www.atrealty.com.au)

