

SOLD

ELEVATED BENEFITS

This property won't last long! It is a versatile renovated elevated home in the highly sought after suburb of Leanyer. Located close to a multitude of primary and secondary schools, Hibiscus Shopping complex and minutes from Casuarina shopping complex, hospitals, parklands and beaches.

- Freshly painted renovated elevated home
- Upstairs three bedroom with louvres, built in robes and fully air conditioned
- Separated large lounge area
- New renovated kitchen next to the dining area
- Upgraded main bathroom with shower over bath and separate toilet
- Downstairs is the self-contained new granny flat featuring
- Two generous bedrooms with mirrored robes and fully air conditioned
- Open plan living and dining area with kitchenette
- Store/pantry utilities room
- Bathroom features shower and vanity
- Separate toilet
- Downstairs undercover entertainment area overlooking the spa
- Garden shed with attached carport
- Cement driveway – plenty of room for boy's toys and extra vehicles
- Large yard with fully reticulated gardens

This appealing home has plenty to offer. All colour tones are neutral and the home is well maintained. It will be up to you to add your own personality to make it yours. Fabulous opportunity for added income, family members or a large family. Don't miss out.

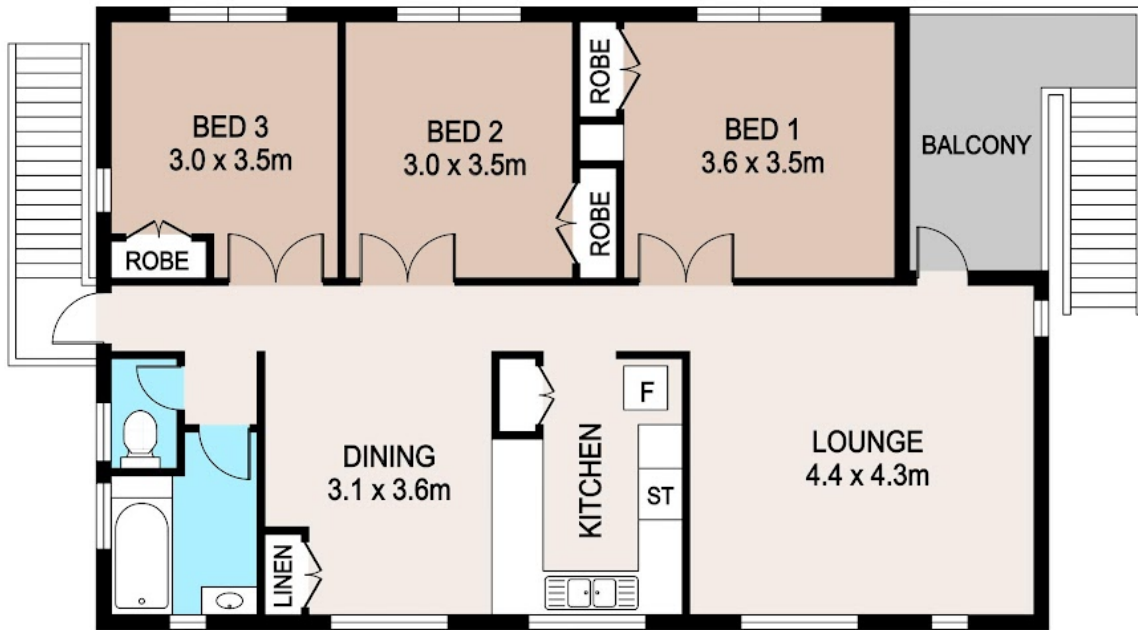
5 BED | 2 BATH | 2 CAR

PRICE:
\$600,000

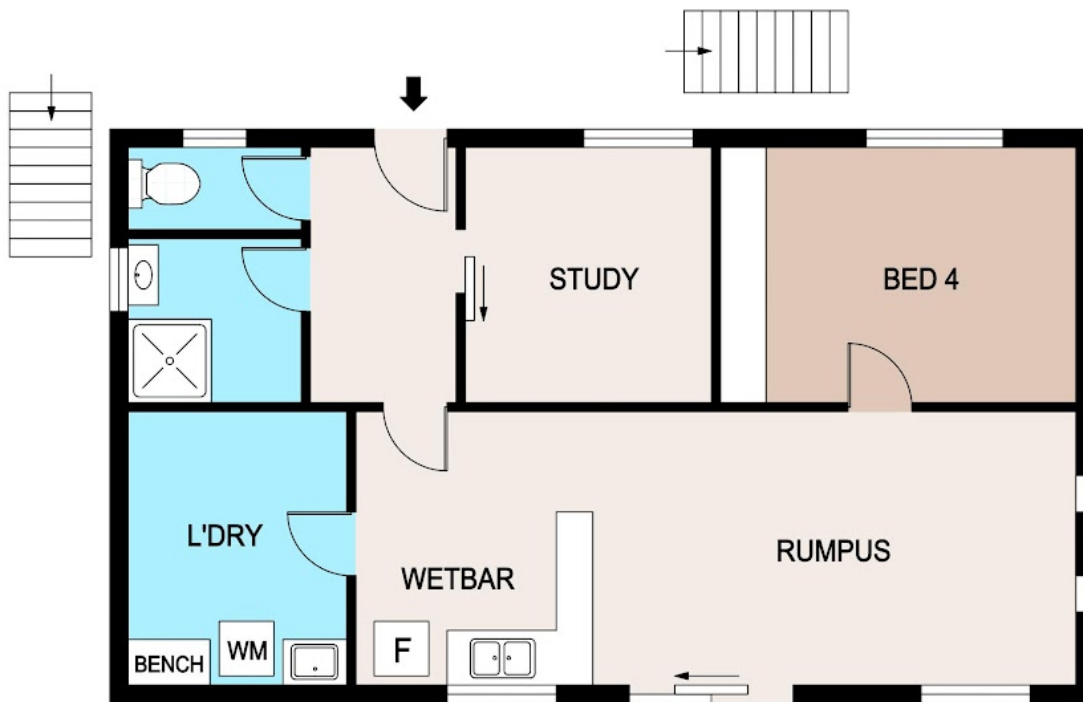
OPEN FOR INSPECTION:
N/A



Trish McClelland
0418612640
trish.mcclelland@atrealty.com.au
www.atrealty.com.au



FIRST FLOOR



GROUND FLOOR

Disclaimer: Please note this floor plan is for marketing purposes and is to be used as a guide only. All dimensions are estimates only and may not be exact measurements.

DISCLAIMER

PLANS SHOWN ARE FOR MARKETING PURPOSES ONLY, ALL DIMENSIONS ARE APPROXIMATE AND NOT TO SCALE. THEY ARE SUBJECT TO ERRORS AND INACCURACIES AND NO LIABILITY WILL BE ACCEPTED. INTERESTED PARTIES SHOULD MAKE THEIR OWN INQUIRES.

Trish McClelland

0418612640

trish.mcclelland@atrealty.com.au

www.atrealty.com.au

