

# FOR SALE

## UNDER CONTRACT IN 24 HOURS WITH MULTIPLE OFFERS

### UNDER CONTRACT UNDER CONTRACT

Amazing opportunity here to buy into a very popular pocket of Secret Harbour nestled between the Comet Bay Primary School and College. Ideal first home or investment opportunity for the investor looking to add to their portfolio. This smart and well-maintained family home offers lots of extras including dual alfresco areas, feature recessed ceilings to the main living and a kids activity room or study.

Some of the many features include:

- Located on a 641 sqm block
- Built by Highbury Homes in 2005
- 184 sqm of internal living area and 255 sqm in total area
- Set on a corner block with potential for side access
- Located in the sought-after Comet Bay Primary and College catchment areas
- Formal lounge room is located to the front of the home and offers a second living area that is separate
- Large master bedroom is spacious with walk in robe and modern ensuite
- Open plan kitchen, meals, family and games rooms
- Split system reverse cycle air conditioner to main living room
- Two feature recess ceilings add elegance and class to the main living areas
- Functional kitchen offers lots of bench space and storage, dishwasher, microwave shelf, corner

4 BED | 2 BATH | 2 CAR

PRICE:  
UNDER CONTRACT

OPEN FOR INSPECTION:  
N/A



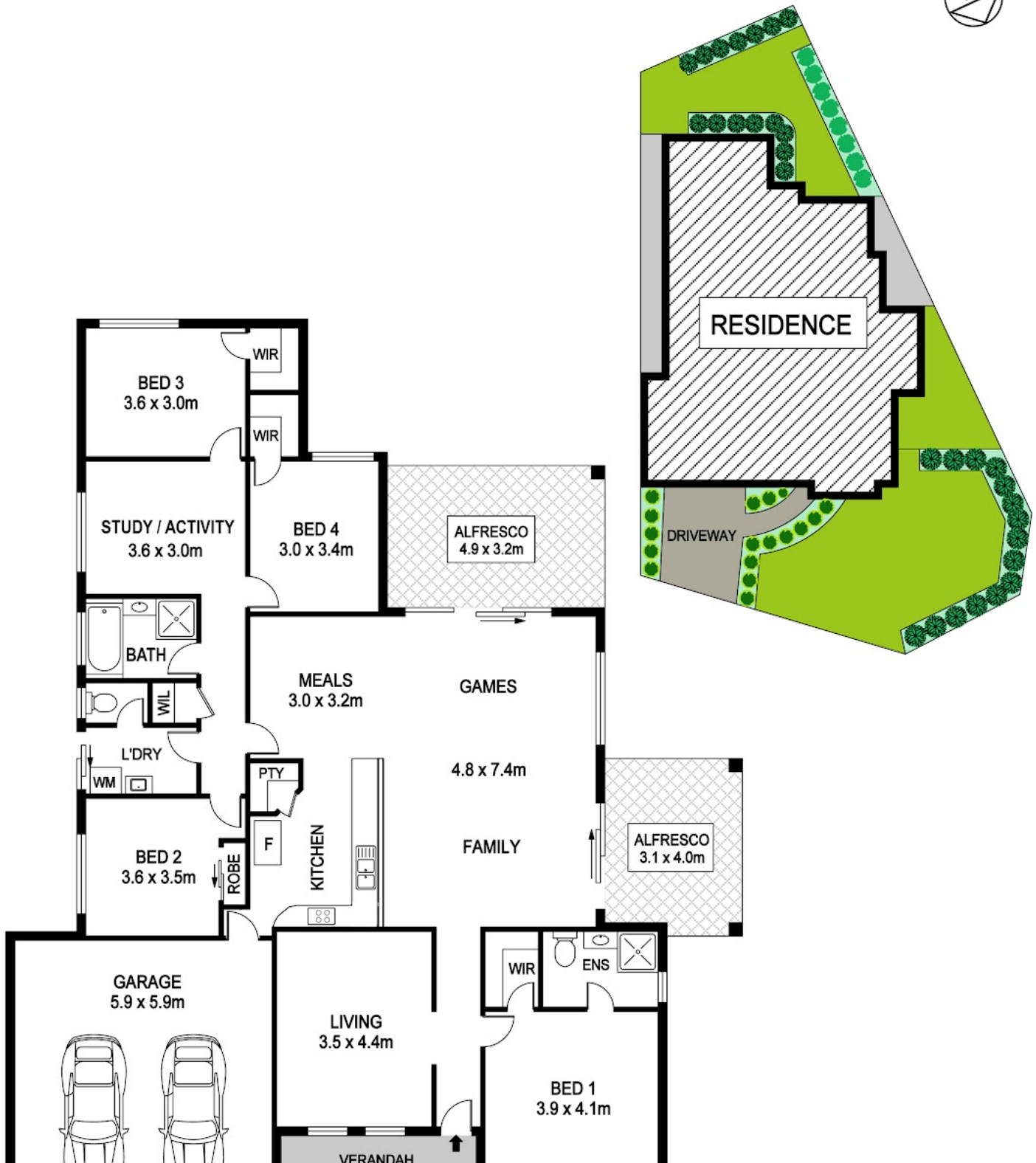
**Clarissa Alsop**  
**0421827669**  
 clarissa@atrealty.com.au  
[www.atrealty.com.au](http://www.atrealty.com.au)

# 6 Newfound Street SECRET HARBOUR



Block Size 641m<sup>2</sup> | 4 Bedrooms | 2 Bathrooms | 2 Car  
Internal 184m<sup>2</sup> | External 71m<sup>2</sup> | Total 255m<sup>2</sup>

Clarissa Alsop | 0421 827 669



Disclaimer: Please note this floor plan is for marketing purposes and is to be used as a guide only. All dimensions are estimates only and may not be exact measurements.



REAL ESTATE FLOOR PLANS | [houseguru.com.au](http://houseguru.com.au) | © House Guru Real Estate Photography™

Whilst every attempt has been made to ensure the accuracy of the floor plan contained here, measurements of doors, windows, rooms and any other items are approximate and no responsibility is taken for error, omission or mis-statement. This plan is for illustrative purposes only and should only be used as such by any prospective purchaser. The services systems and appliances shown have not been tested and no guarantee as to their operability or efficiency can be given.

**Clarissa Alsop**  
0421827669  
[clarissa@atrealty.com.au](mailto:clarissa@atrealty.com.au)  
[www.atrealty.com.au](http://www.atrealty.com.au)

