



SOLD

VIEWS, LOCATION, AND LOADS OF CHARACTER!

UNDER CONTRACT - pending finance approval

30 Maralinga Drive, Ashmore. A virtual tour and Building & Pest report are available on request. First time offered for sale, this property is loaded with character and charm. This is a unique opportunity to secure this spacious, secure, and private home with stunning Hinterland views and beautiful breezes. The property is located in an exclusive and elevated part of Ashmore and is central to all major schools, shopping centres, hospitals, and freeway access, all within minutes to the main beaches of the Gold Coast!

Just move in, invest or add your own touches! An inspection is a must to appreciate, make an offer... will not last!

- * 713m² elevated block with Hinterland views looking to Royal Pines Resort.
- * 2 spacious and breezy open plan living areas with access to the covered alfresco and balcony.
- * Air-conditioned main living/ dining area with raked ceilings, potbelly stove, beautiful breezes and loaded with character and atmosphere.
- * Kitchen with beautiful hinterland outlook and walk-in pantry.
- * Large downstairs bedroom & ensuite with potential to be a granny flat (ensuite and robes need to be completed)
- * Spacious ensuited master with walk-in robe, covered retreat, breezes, and stunning outlook.
- * Loads of covered outdoor living areas, balconies, alfresco areas, and covered decks all with stunning views and breezes.
- * Spacious and separate laundry/ mudroom.
- * Spacious shed+ loads of storage.
- * Car spaces under sail shades.
- * 2.1 Kiliwattes solar panels, solar hot water system.

Rates

Gold Coast Council Rates - \$862.9 per 6 mths
Gold Coast Water Rates- App\$472.96 per quarter

A Building & Pest has been carried out by the owners.
No easements or encumbrances on the land.

4 BED | 3 BATH | 0 CAR

PRICE:
\$900,000

OPEN FOR INSPECTION:
N/A



Audrey Goetz
0412148078
audrey@atrealty.com.au
www.atrealty.com.au

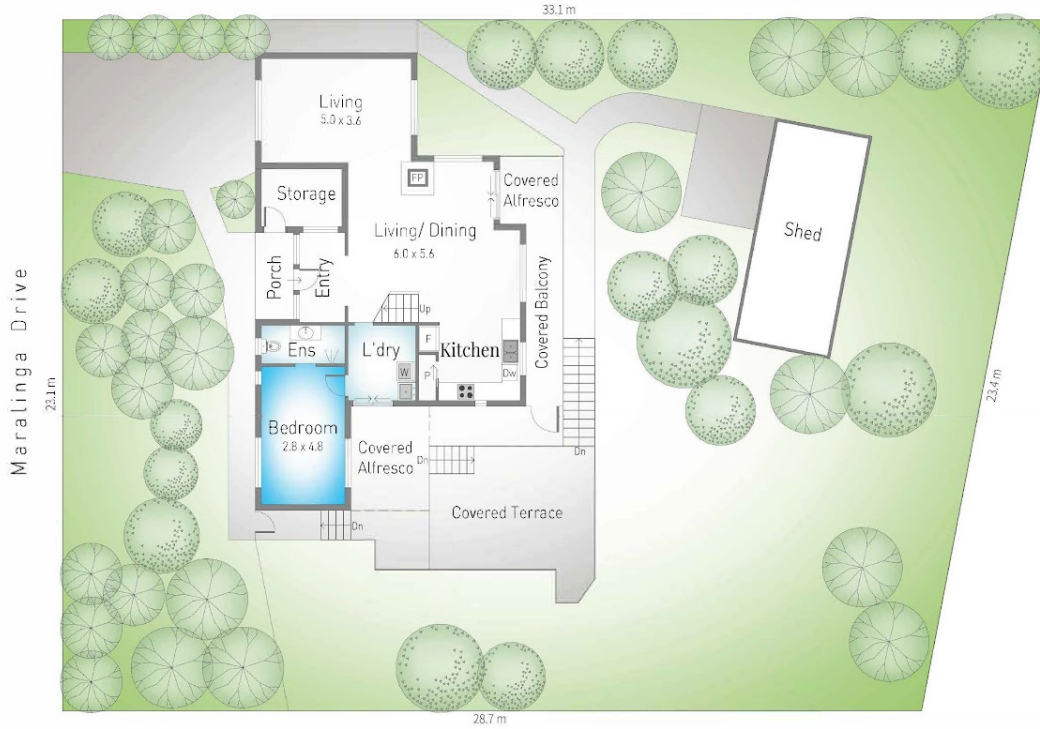
30 Maralinga Drive, Ashmore

4 3 713 m²

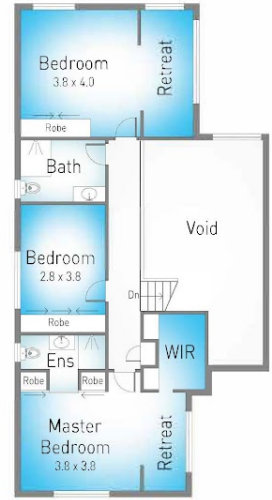
Internal: 191 m² | External: 25 m² | Total: 216 m²



Audrey Goetz 0412 148 078



Ground Floor and Site Plan



First Floor



Dimensions are approximate. All information contained herein is gathered from sources we believe to be reliable. However we cannot guarantee its accuracy and interested persons should rely on their own enquiries.



Disclaimer: Please note this floor plan is for marketing purposes and is to be used as a guide only. All dimensions are estimates only and may not be exact measurements.

Audrey Goetz
0412148078
audrey@atrealty.com.au
www.atrealty.com.au

