

SOLD

SPACIOUS FAMILY OASIS ON ALMOST 3 ACRES

INSPECTIONS BY APPOINTMENT ONLY! PLANS AVAILABLE UPON REQUEST.

Nestled in a serene, treed environment, this expansive property stands as a testament to luxury and privacy, perfectly suited for large families or investors with a forward-looking vision. Its sprawling 11,691m² block offers unparalleled space for privacy, outdoor activities, and harbors potential for future developments, including approved permit for an additional dwelling. Situated merely a 7-minute drive from Tecoma Station and essential shops, and within the catchment areas for Tecoma Primary and Upwey High School, this home blends the tranquility of a secluded oasis with the convenience of urban living.

The residence is distinguished by its thoughtful layout, featuring five spacious bedrooms that provide not just restful sanctuaries but also stunning views that connect inhabitants with the beauty of nature and the daily sunrise. The master bedroom is a realm of luxury unto itself, with an ensuite and walk-in robe enhancing its appeal. The interiors are marked by polished slate floors that marry elegance with practicality. Central to its design is a dream kitchen, outfitted with stone benchtops, stainless steel appliances, a spacious walk-in pantry and servery windows, enhanced by various living spaces including a dining area, two lounges, and a versatile carpeted loft adaptable for use as a playroom, home office, or additional bedroom.

Beyond the indoor allure, the property excels with its outdoor features. A beautifully landscaped garden and a welcoming gently sloping driveway set a serene tone, while an incredible covered entertaining area, accessed via bi-fold doors from the living rooms provides an outdoor space that can be enjoyed throughout the year. The inclusion of a double garage and double carport addresses all parking needs, accommodating multiple vehicles with ease.

This property represents not just a dwelling but a sanctuary for those who cherish peace, luxury, and the promise of growth. Ideal for accommodating a dynamic family lifestyle, entertaining with sophistication, or investing with an eye to the future, it offers a unique blend of amenities that promise to fulfill a range of aspirations. To seize the opportunity to make this private paradise your own, arrange your visit today and take the first step towards living in your dream home.

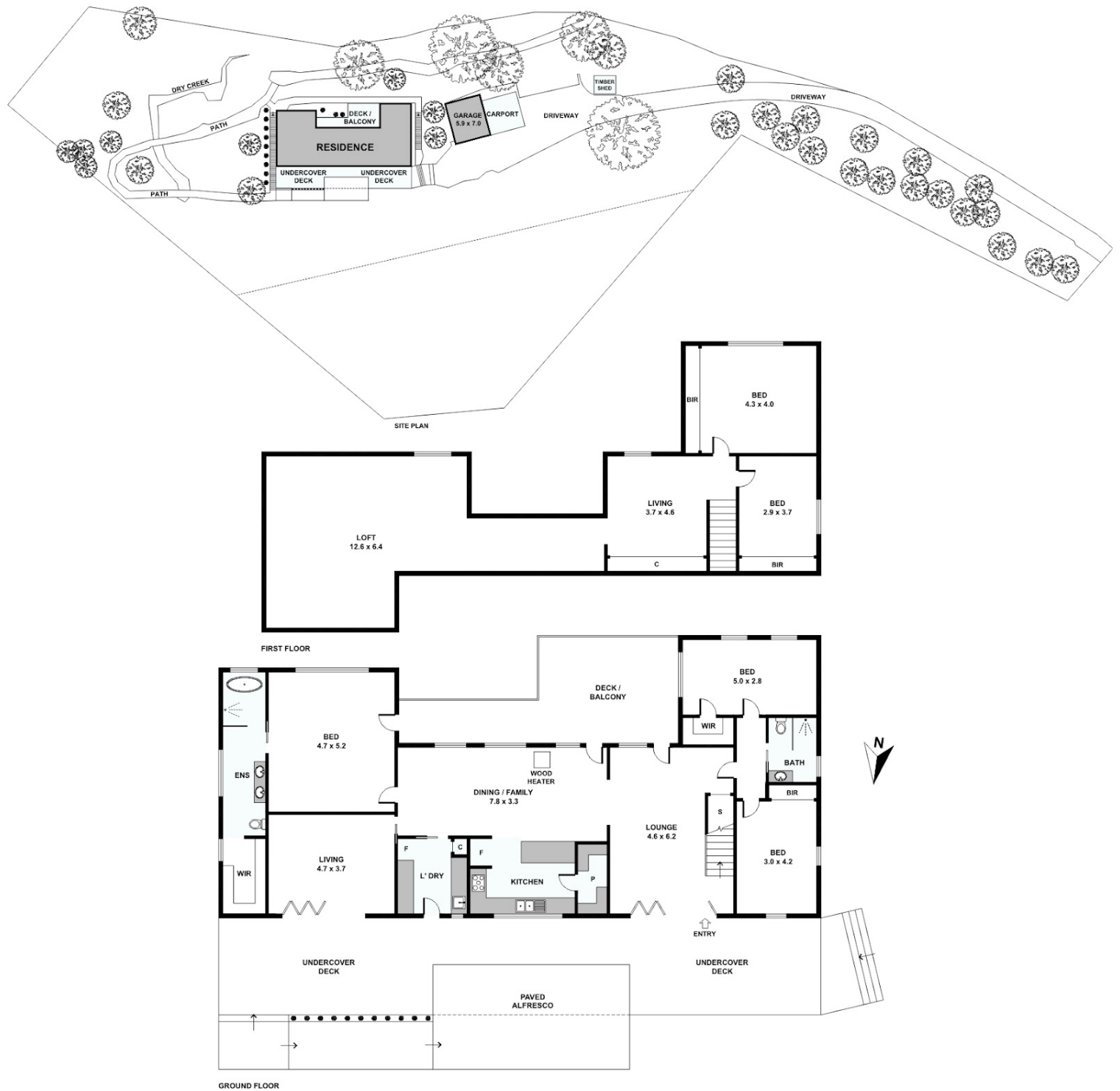
5 BED | 2 BATH | 4 CAR

PRICE:
\$1,547,000

OPEN FOR INSPECTION:
N/A



Scott Collins
0499005265
scottcollins@atrealty.com.au
scottcollins.com



Disclaimer: Please note this floor plan is for marketing purposes and is to be used as a guide only. All dimensions are estimates only and may not be exact measurements.