



**SOLD**

## TRENDY PROFESSIONAL OFFICE

This commercial office is ideally situated on a busy street with great drive by exposure and easy customer access and parking. Placed only 4 minutes to the hospital and other health specialists.

Positioned on the 1st floor in a tidy secure complex of 5 professional businesses including a dental practice, HR recruitment and psychologist. To access the office suite there are stairs and a chair lift available. A light and trendy office featuring an open collaboration space, 3 private offices and kitchen. Neat and tidy presentation with new flooring throughout. Fully airconditioned with ducted and split system units.

Customer and staff toilets are easily accessed on the same floor. Secure undercover parking for 1 car, plus guest parks available.

Body Corporate Fees \$3,800 pa aprox  
Council Rates \$1,800 pa aprox

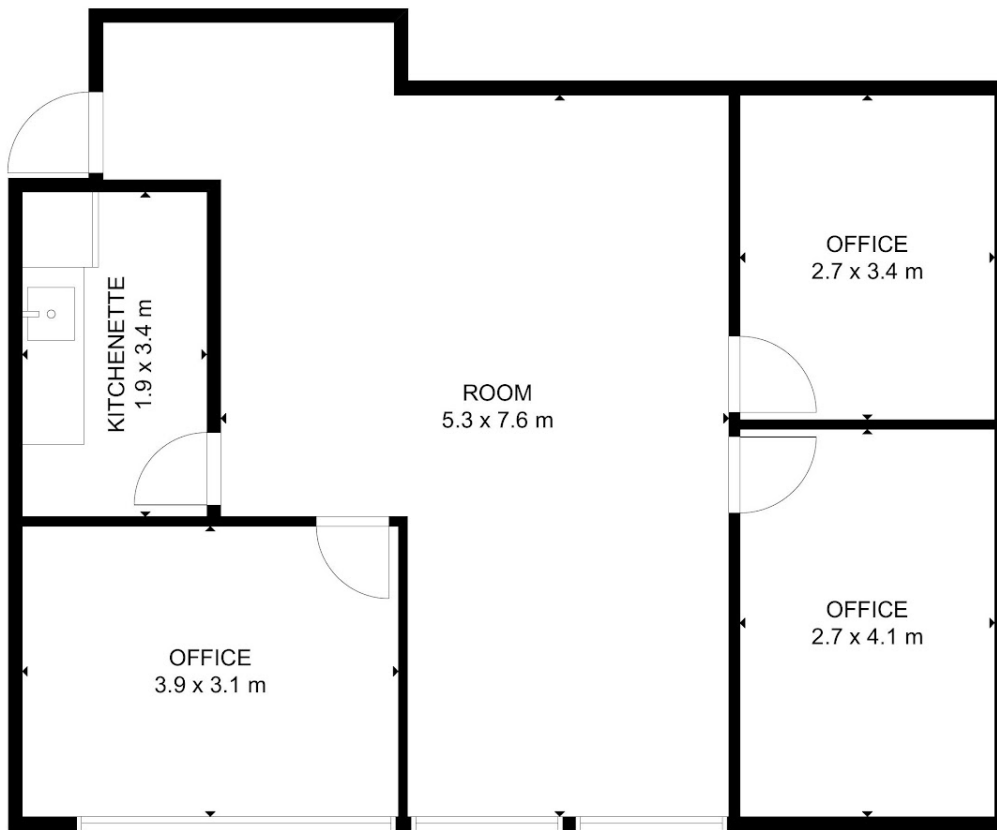
**3 BED | 0 BATH | 1 CAR**

**PRICE:**  
\$230,000

**OPEN FOR INSPECTION:**  
N/A



**Zoe Wicks**  
**0477114778**  
zoewicks@atrealty.com.au  
[www.atrealty.com.au](http://www.atrealty.com.au)



FLOOR 1

GROSS INTERNAL AREA  
TOTAL: 79 m<sup>2</sup>  
FLOOR 1: 79 m<sup>2</sup>  
SIZE AND DIMENSIONS ARE APPROXIMATE, ACTUAL MAY VARY.

Zoe Wicks | @realty  
Real Estate

Disclaimer: Please note this floor plan is for marketing purposes and is to be used as a guide only. All dimensions are estimates only and may not be exact measurements.

Zoe Wicks  
0477114778  
zoewicks@atrealty.com.au  
[www.atrealty.com.au](http://www.atrealty.com.au)

@realty