



# SOLD

## A ONCE IN A LIFETIME OPPORTUNITY TO BUY A HIDDEN GEM!

To locals Martin Cres is known as a quiet street, its own private enclave. The street is lined with troppo style homes with each house mostly concealed, having their own unique identity.

With dense foliage this home is predominantly hidden from the streetscape, only glimpses of bold paint colour are evident on the facade.

Design junkies can rejoice in knowing the original house was designed by renowned architect Hully Liveris. Connoisseurs of Liveris architecture will notice some signature design elements.

Additional bedrooms, a verandah and other renovations were thoughtfully completed at later date by award winning builders Overlander Homes.

Great architects know the balance between providing views and offering protection from the elements which is evident in this home. Sitting on 729m<sup>2</sup> the property offers views of nature and the surrounding environment.

The house footprint is driven largely by the site and its context, this residence adopts a successful courtyard in the forecourt. Step up onto an oversized pavilion, placing outdoor living and entertaining at the heart of the home. The location of the large spa alongside the verandah offers family connection with easy visibility. The planning of the spaces demonstrates separate zones for family living through a wonderful sense of togetherness and fun. The kids can play non stop with a fantastic park directly opposite.

Inside the double glass front doors, you will find the simple form and volume of a living space that opens up to the outdoor environment, bringing nature into the urban built form. A tidal creek runs along the rear of the property offering fun times and adventure with a dinghy.

A textual palette of interior materials include natural timber flooring and high raking ceilings lined with rattan.

The existing owners have loved this home so much that it's the very first time its been brought to

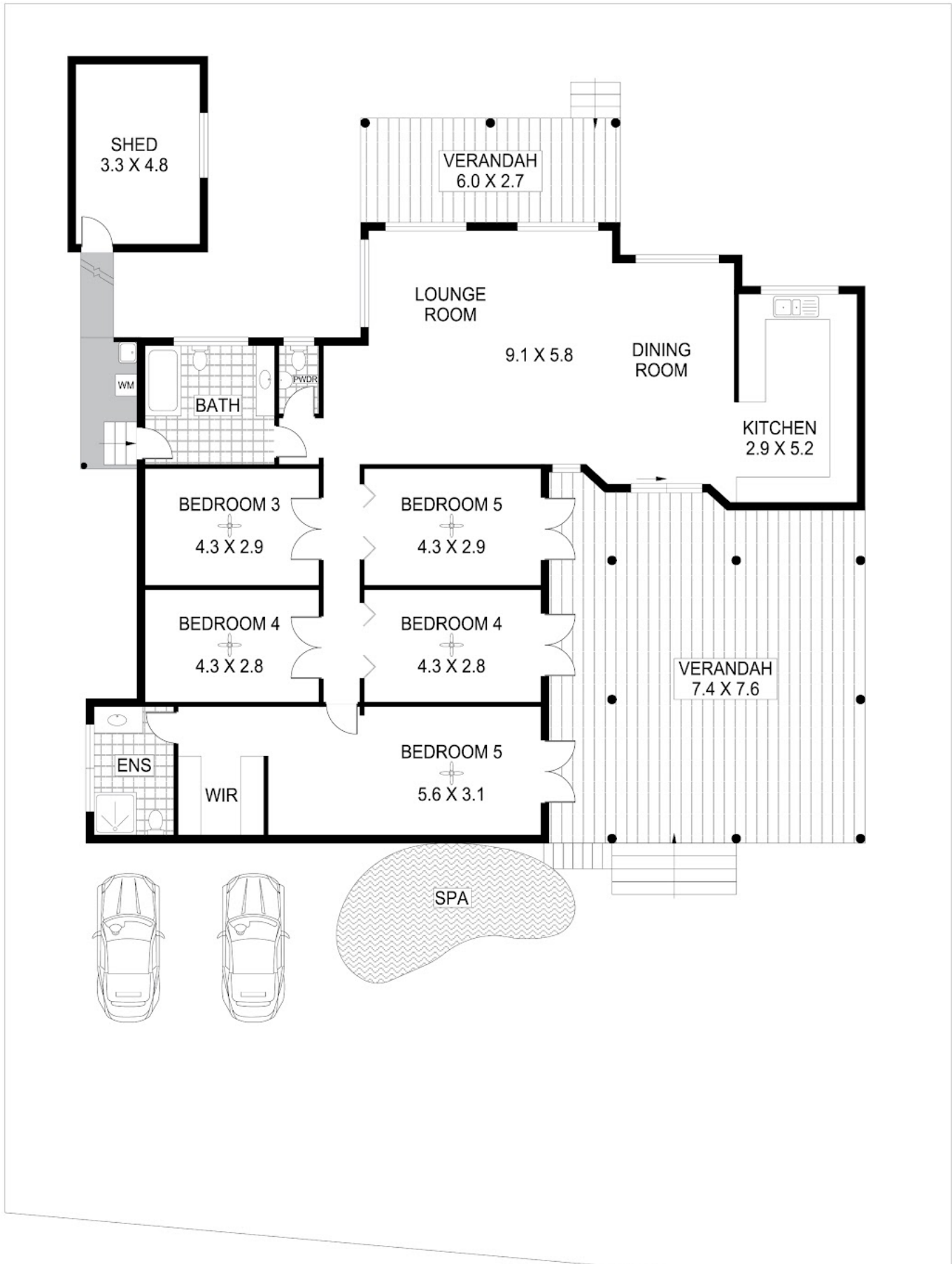
5 BED | 3 BATH | 2 CAR

PRICE:  
\$1,001,000

OPEN FOR INSPECTION:  
N/A



**Nicole Wheeler**  
0417508800  
nicolewheeler@atrealty.com.au  
[www.atrealty.com.au](http://www.atrealty.com.au)



Disclaimer: Please note this floor plan is for marketing purposes and is to be used as a guide only. All dimensions are estimates only and may not be exact measurements.

Scale in metres. Indicative only. Dimensions are approximate. All information contained herein is gathered from sources we believe to be reliable. However we cannot guarantee its accuracy and interested persons should rely on their own enquiries

21 Martin Cres, Coconut Grove

0417508800

nicolewheeler@atrealty.com.au

[www.atrealty.com.au](http://www.atrealty.com.au)

