



SOLD

MUCH LOVED FAMILY HOME!

Located in the highly sought after Cambridge Estate, this family home set on a wide street frontage offers an open floor plan boasting natural light and spacious living.

The bright living space with large windows adjoins the generous kitchen and meals area, maintaining a modern feel throughout the established home. Three spacious bedrooms, all with built-in-robos, provide a lovely outlook to a tranquil green and grassy outdoor setting - the perfect way to enjoy one's own space. The home also comprises a main bathroom, separate toilet, gas heating, split-system, two storage sheds, stainless steel appliances and a full sized-laundry ensuring all the essentials are met.

Outside, a double-car carport with electric remote also provides purpose as an undercover BBQ area, perfectly adjoining the large and private backyard with plenty of room for children's play and entertaining plenty of guests.

This charming brick abode is positioned within the Cambridge Primary School Zone and within grasp of an array of schools, parks, bus stops and shops. Pacific Werribee is only footsteps away and all of Hoppers Crossing's finest amenities are no more than a short drive away.

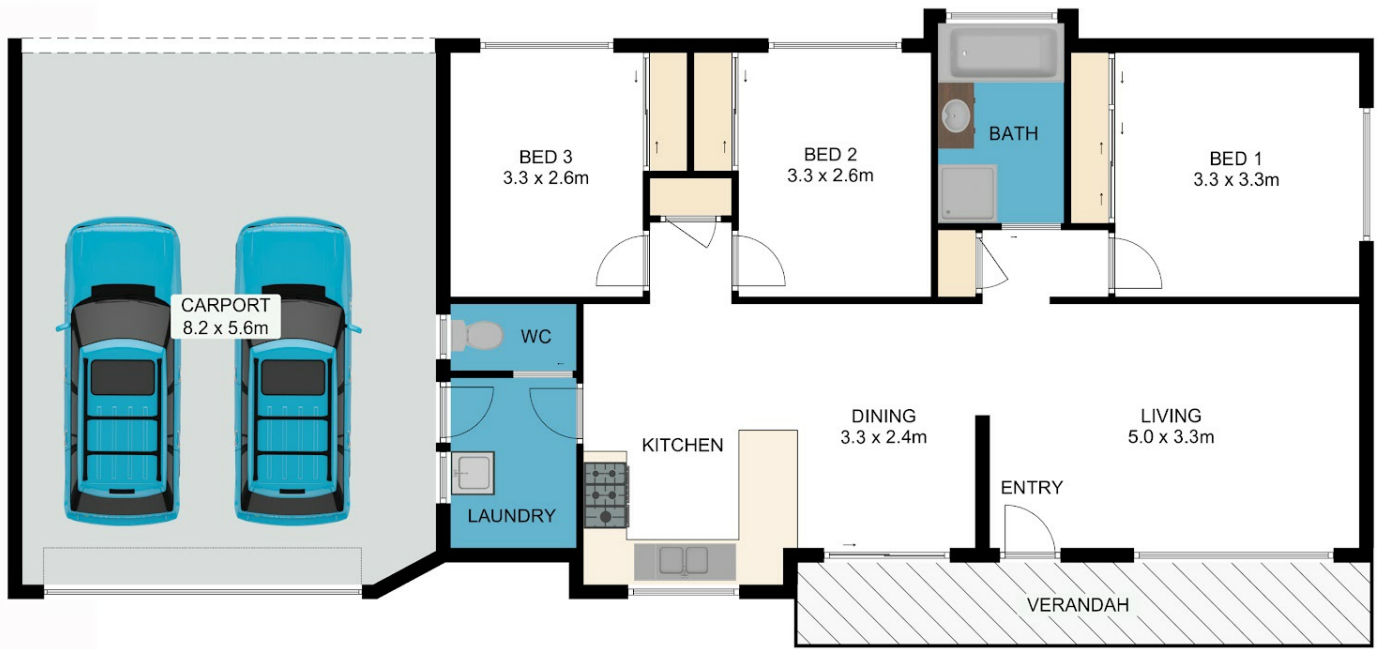
3 BED | 1 BATH | 2 CAR

PRICE:
\$586,500

OPEN FOR INSPECTION:
N/A



Samuel Hogan
0401315234
samuel@atrealty.com.au
www.atrealty.com.au



25 William Wright Wynd, Hoppers Crossing



Whilst every attempt has been made to ensure the accuracy of the floor plan contained here, measurements of doors, windows, rooms and any other items are approximate and no responsibility is taken for any error, omission, or mis-statement. This plan is for illustrative purposes only and should be used as such by any prospective purchaser. The services, systems and appliances shown have not been tested and no guarantee as to their operability or efficiency can be given.



Disclaimer: Please note this floor plan is for marketing purposes and is to be used as a guide only. All dimensions are estimates only and may not be exact measurements.