



Sold

CONTEMPORARY FAMILY HOME IN HIGHLY SOUGHT AFTER LOCATION.

4 BED | 2 BATH | 2 CAR

4 Affinity Place, Birtinya, QLD, 4575

Located in a sought after enclave, this spacious 4 bedroom home on Birtinya Island is located 500m from the SCU Hospital and has all the features required for modern living.

Four bedrooms and a living area upstairs, the lower level offers open plan living, spacious family living with plenty of space for those that work from home.

Situated on the north end of the block and facing onto a park, the fully fenced property has only one neighbour.

Upstairs the large master suite with private balcony overlooks the park and is positioned to greet the morning sun and the sea breeze during the day. The ensuite is luxurious with a beautiful bath tub to relax and unwind in.

The master suite is separated from the other 3 other bedrooms by a spacious retreat area.

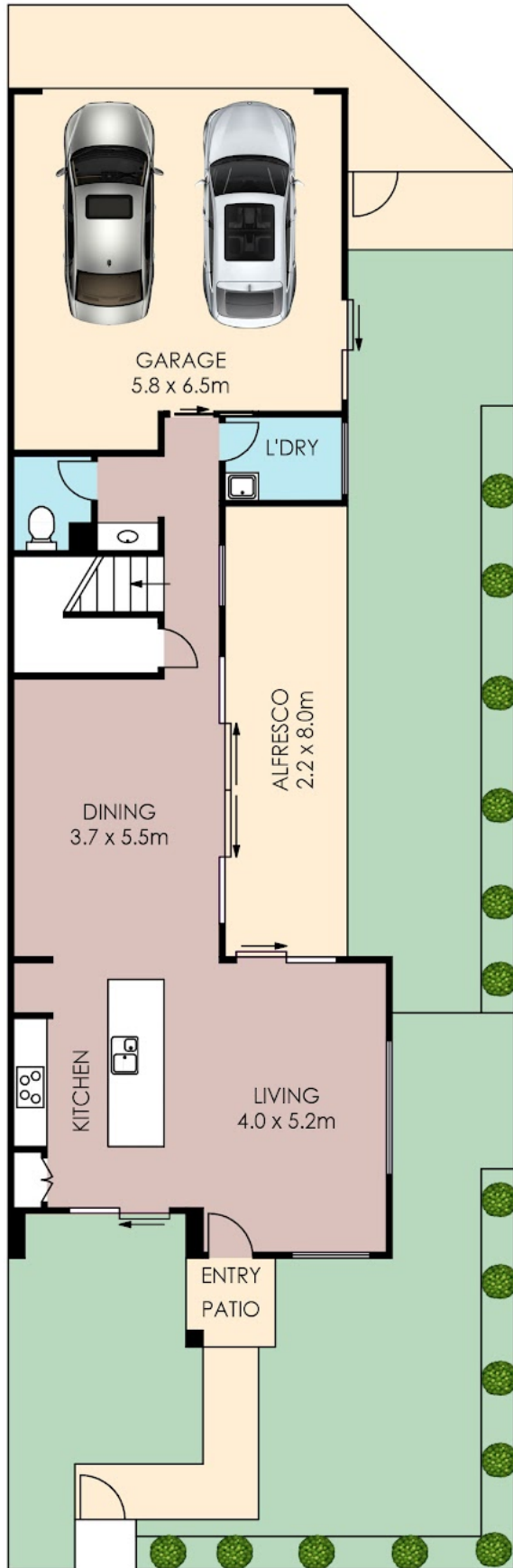
Downstairs is devoted to living space with the open plan kitchen/ living / dining seamlessly flowing

PRICE:
\$910,000

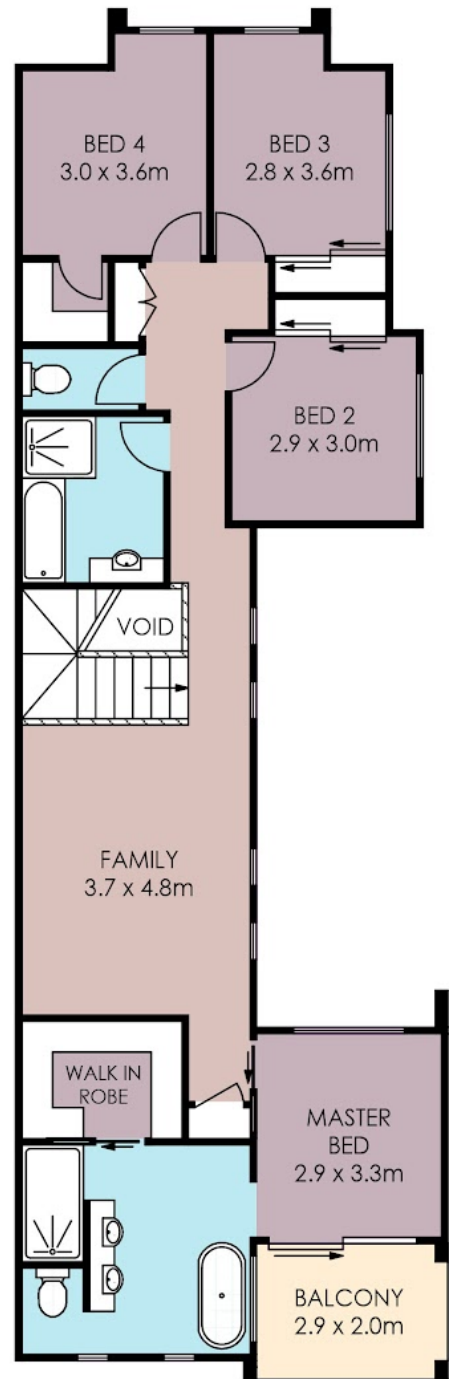
OPEN FOR INSPECTION:
N/A



Greg Pratt
0413 624 308
greg@coastaledgerealestate.com.au



LOWER LEVEL



UPPER LEVEL

