

FOR LEASE

LUXURY LIVING WITH 3 BEDROOMS, STUDY & 2 CAR SPACES – REFLECTIONS CLEVELAND.....

Situated only metres from the glistening waters of the Bayside, this exquisite apartment is one of the largest and entices a sought-after boutique lifestyle setting.

Located within the premier Reflections complex offering resort-style amenities and exceptional surroundings, residents will enjoy easy access to all the amenities Cleveland is famous for. The Train line from Cleveland to the City is a viable way of travel, and easily within walking distance.

Featuring a contemporary light filled, open-plan design with high ceilings to compliment the style, this high-end apartment welcomes you into the entry foyer and then reveals an inviting lounge and dining area, and adjoining the stylish kitchen with 30mm stone benchtops with waterfall edges, and outstanding stainless steel appliances, this living space is framed by floor-to-ceiling glass walls that gaze out over your exclusive oversized entertainers balcony. Capturing scenic views across the surrounding greenery, this outdoor retreat presents a private setting to enjoy alfresco dinners, drinks and entertaining.

For those seeking further outdoor space to relax and entertain, this complex offers residents a beautiful swimming pool, outdoor seating area with BBQ facilities, also complimented with a recreation room to engage in bigger onsite functions of your choice.

Additional features:

- Master suite is spacious and offers a with walk-in robe and divine ensuite
- Separate laundry
- Two secure car space with your private Lock-up storage room.
- Recreational room on level 1
- Ducted Daikin Air-Conditioning
- Lift access
- On-site management

Boasting a beautiful Bayfront setting only metres from the canals and Moreton Bay, this unit is positioned 600m from Cleveland Central with Woolworths, shops and cafes, Cleveland train

3 BED | 2 BATH | 2 CAR

PRICE:
\$580

OPEN FOR INSPECTION:
N/A

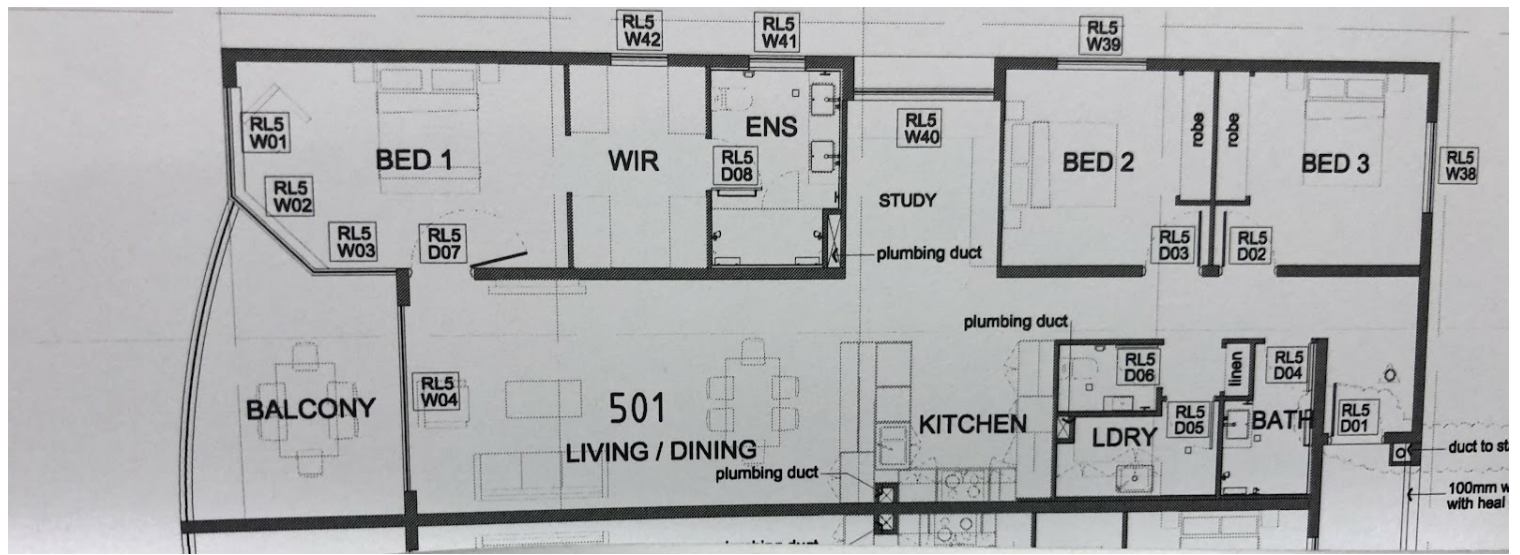


Faye Kinnear

0403651587

fayekinnear@atrealty.com.au

www.atrealty.com.au



Disclaimer: Please note this floor plan is for marketing purposes and is to be used as a guide only. All dimensions are estimates only and may not be exact measurements.