



FOR SALE

MASSIVE APARTMENTS

Stage 2 now selling

These apartment are not your standard size apartment. Ruby Apartments would have to be the largest apartments within the City of Maroondah.

Heathmont is fast becoming one of those rare locations providing everything for a life in perfect balance. These apartments are a lot larger than the standard apartment in the area.

Combining both a vibrant lifestyle with the ever-developing Heathmont Shopping Village and Station upgrade, along with the serenity of a quiet and leafy neighborhood, Heathmont is a place many want to call home.

A brilliant off-the-plan opportunity for the discerning buyer, surrounded by established trees and great neighbours, Ruby Apartments will be a natural fit for many and the kind of attractive place you'll be desperate to get home to.

Stepping inside, Ruby Apartments it has been designed to offer an urban retreat of refined living spaces filled with natural light. Going far beyond the standard modern offering, these spacious new apartments deliver generous floor plans that are complemented by private balconies and open community spaces.

Ruby Apartments also stands apart with the high level of intricacy in the fixtures and finishes creating contemporary dwellings with unparalleled sophistication, style and outstanding attention to detail.

Balancing thoughtful architecture designed by internationally acclaimed award winning EAT architects. With enduring quality and energy efficiency, Ruby Apartments design impresses from every angle and there's no doubt the experience of living here will impress even more.

On the doorstep of a number of picturesque walking trails, just metres from Heathmont Train Station, Heathmont Village shopping with over 70 shops, cafes and restaurants, enjoying easy access to Canterbury Rd, the Maroondah Highway and Eastlink, plus with great connection to the Dandenong Ranges and the spectacular Yarra Valley, you can rest assured your investment here will be a smart one.

2 BED | 1 BATH | 1 CAR

PRICE:
\$598,000

OPEN FOR INSPECTION:
N/A



Stuart Greig
0459922221
stuart.greig@atrealty.com.au
www.atrealty.com.au

Ruby Apartments Home 101

2

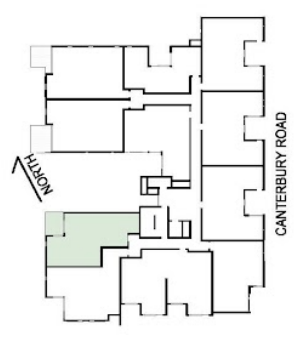
2

2

1



INTERNAL AREA	
Total Internal Area	90m ²
EXTERNAL AREA	
Balcony	10m ²
Total External Area	10m ²
LOT AREA	
Total Lot Area	100m ²



- KEY
- P Pantry
 - WO Walk-in Robe
 - UO Underbench Oven
 - F Fridge
 - DW Dishwasher
 - S Storage
 - BIR Built-in Robe
 - WIR Walk-in Robe

Please note this document is a guide only and was prepared prior to completion. The information contained herein is believed to be correct but is not guaranteed. All photographs, renderings, plans, samples, or other graphics are indicative only and may not be exact or accurate. Items shown in grey such as loose furniture and study joinery are shown to indicate possible layouts and are not included in the scope of works. Dimensions are approximate and areas are calculated in accordance with the Property Council of Australia method of measurement. Changes will undoubtedly be made during the development and dimensions, fittings, finishes, and specifications are subject to change without notice in accordance with the provisions to the contract for sale.



Disclaimer: Please note this floor plan is for marketing purposes and is to be used as a guide only. All dimensions are estimates only and may not be exact measurements.