



SOLD

SOLD BY ROBYN HUNT

Privately nestled in the heart of the beautiful and leafy rural area known as Richmond Hill this stunning property is offered for sale for the very first time.

With 5 park-like acres, that have been lovingly and meticulously maintained over the years, this rare gem allows scope for all aspects of a country lifestyle - all within easy access to impressive major amenities, including a vast selection of education and health facilities, both public and private.

Split level in design, with an expansive all-weather entertaining area, the 3 bedroom, 2 bathroom home takes pride of place and overlooks the stunning natural beauty that surrounds. Incorporating high raked ceilings with exposed beams and separate living spaces it is further indulged by a spacious modern kitchen, and separate main bedroom with impressive ensuite.

Air conditioning, strategically placed wood fireplace, and ceiling fans ensure an ambient indoor temperature is enjoyed all year 'round, and a separate family room/office/study is in perfect proximity to the main bathroom and large second and third bedrooms.

Space and tranquility are in abundance with plenty of room for sheds, or a pony or two, and the daily delight of choosing your spot to enjoy a beverage whilst taking in the gorgeous sound of local birdlife and fauna at play.

A scenic short drive to stunning beaches and world famous National Parks, this ideal small acreage property also provides the potential of subdivision or a secondary dwelling (STCA).

This is your opportunity to secure the lifestyle you've been dreaming of.

Contact Exclusive Selling Agent, Robyn Hunt, on 0448 448 758 today.

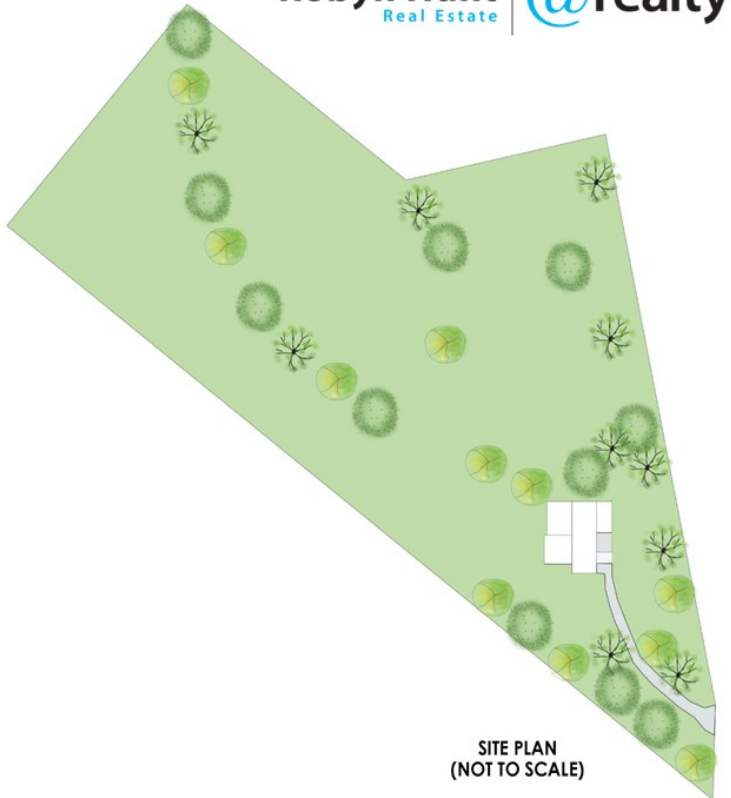
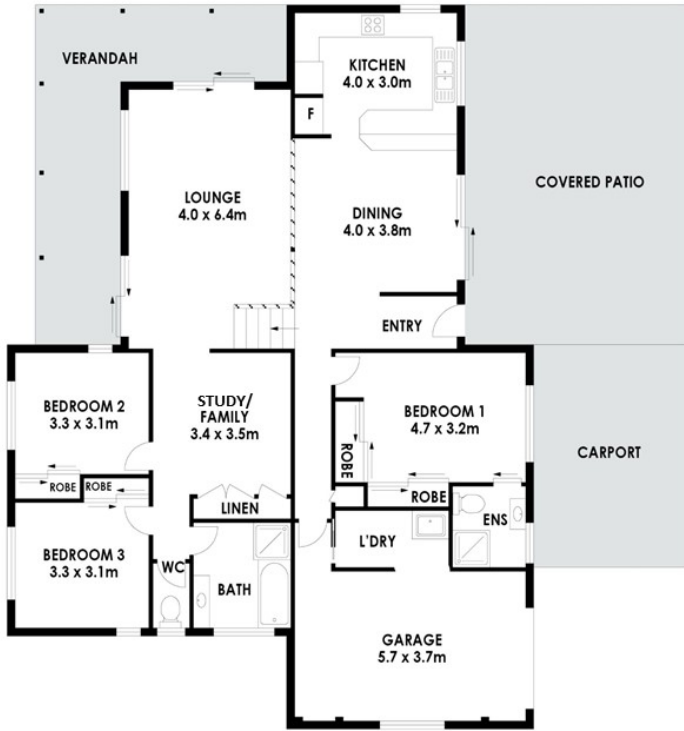
3 BED | 2 BATH | 2 CAR

PRICE:
\$1,200,000

OPEN FOR INSPECTION:
N/A



Robyn Hunt
0448448758
robyn@atrealty.com.au
www.atrealty.com.au



SITE PLAN
(NOT TO SCALE)

339 Richmond Hill Road RICHMOND HILL

Floor Plan Disclaimer: Media Drive (MD) floor plans / site plans are intended as an approximate guide only. No representations or warranties of any nature are given or intended and any person using this information other than as a guide should always rely on their own enquiries. Media Drive property marketing services / 0413979054 / Photography, Floor plans, Video, Aerial photography / www.mediadrive.com.au



APPROXIMATE AREAS @realty	
INTERNAL FLOOR SPACE	- 159m ²
EXTERNAL FLOOR SPACE	- 92m ²
GARAGE	- 21m ²

Disclaimer: Please note this floor plan is for marketing purposes and is to be used as a guide only. All dimensions are estimates only and may not be exact measurements.