



SOLD

"A RARE FIND...A LARGE TOWNHOUSE ...WITH A GOOD SIZED FRONT AND BACK YARD!"

This property backs on the 'Coomera Sports Park' and ideal for a family, first home buyers or investment with delivering strong returns. Situated in a quiet corner of this gated and secure community, this rare find has good sized yards front and back creating strong capital growth due to the size of the lot.

HIGHLIGHT:

- . Two storey townhouse
- . Well presented and cared for
- . 3 bedroom - 2 bathroom
- . 1 car garage
- . Spacious master bedroom with built-ins and ensuite
- . Air conditioned
- . Large living and dining area overlooking the private yard
- . Separate laundry
- . Massive private and level backyard
- . Community pool and spa - Covered BBQ area
- . Backs onto 'Coomera Sports Park'
- . Low Body Corporate \$66 pw approx
- . Gated and secure
- . Car wash bay
- . Onsite manager
- . Pet friendly

GENERAL:

Body corporate approx \$3,450 pa
Rates approx \$2,040 pa

*****EXPRESSIONS OF INTEREST *****

In today's unique market we are under instructions that no price ranges are provided, and all

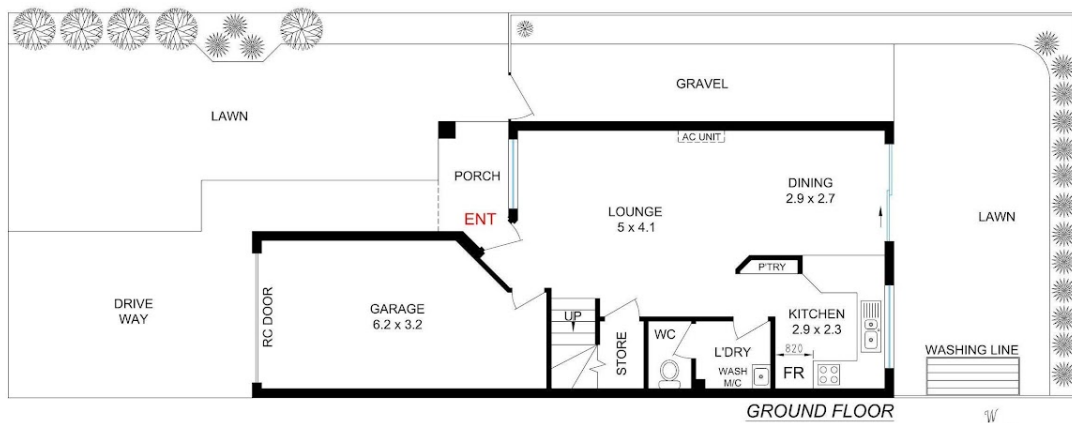
3 BED | 2 BATH | 1 CAR

PRICE:
\$472,500

OPEN FOR INSPECTION:
N/A



Gregg Hewitt
0413442229
gregg@atrealty.com.au
Gregg Hewitt



Internal Gr Floor Area 61.6m²
 Int'l Upper Fl Area 55.3m²
 Combined 116.9m²
 or 12.5sqs

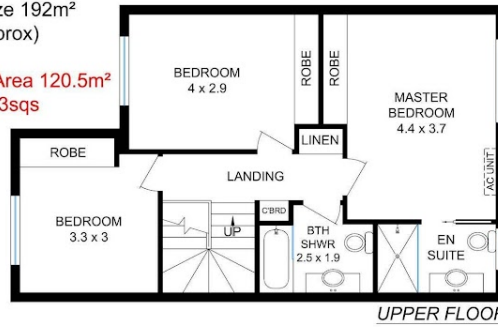
Land Size 192m²
 (Approx)

**Total Floor Area 120.5m²
 or 13sqs**

Porch 3.6m²
 Ceiling Height 2.4m

10/2 BOS DRIVE,
 COOMERA 4209

*Onsite amenities:
 Swimming Pool &
 BBQ Area*



5
4
3
2
1
0

Gold Coast Floor Plans

Scale in Meters. Dimensions are approximate.
 Whilst every care has been made we cannot
 guarantee its 100% accuracy and interested
 persons should rely on their own enquiries

Disclaimer: Please note this floor plan is for marketing purposes and is to be used as a guide only. All dimensions are estimates only and may not be exact measurements.