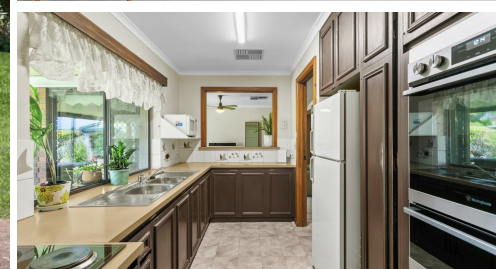


40 APOLLO DRIVE, HALLETT COVE, SA, 5158



SOLD

IDEAL FIRST HOME, 3 BEDROOMS, WIDE FRONTAGE BLOCK, WALK TO SHOPPING AND SCHOOL

A very comfortable family home on a great block of land and in a location that is so close to so many facilities.

Built around 1980, this lovely home consists of 3 bedrooms (all with built-in robes), L-shaped lounge-dining room, central kitchen, family room and family bathroom. Outside includes a substantial outdoor entertaining area and large garage/workshop with a remote control roller door.

The land is 640m² (approx) and provides a lovely flat backyard ideal for family activities and room for further extensions and improvements. The wide frontage of 21m gives the home valuable street appeal.

Apollo Drive is a great location with everything in close proximity. It's an easy walk to the shopping centre, with an abundance of shopping restaurants and services, and R-12 Hallett Cove School, easy access to the train station and the bus is virtually at the door.

A great opportunity for the first home buyer. Be quick!
RLA 269823

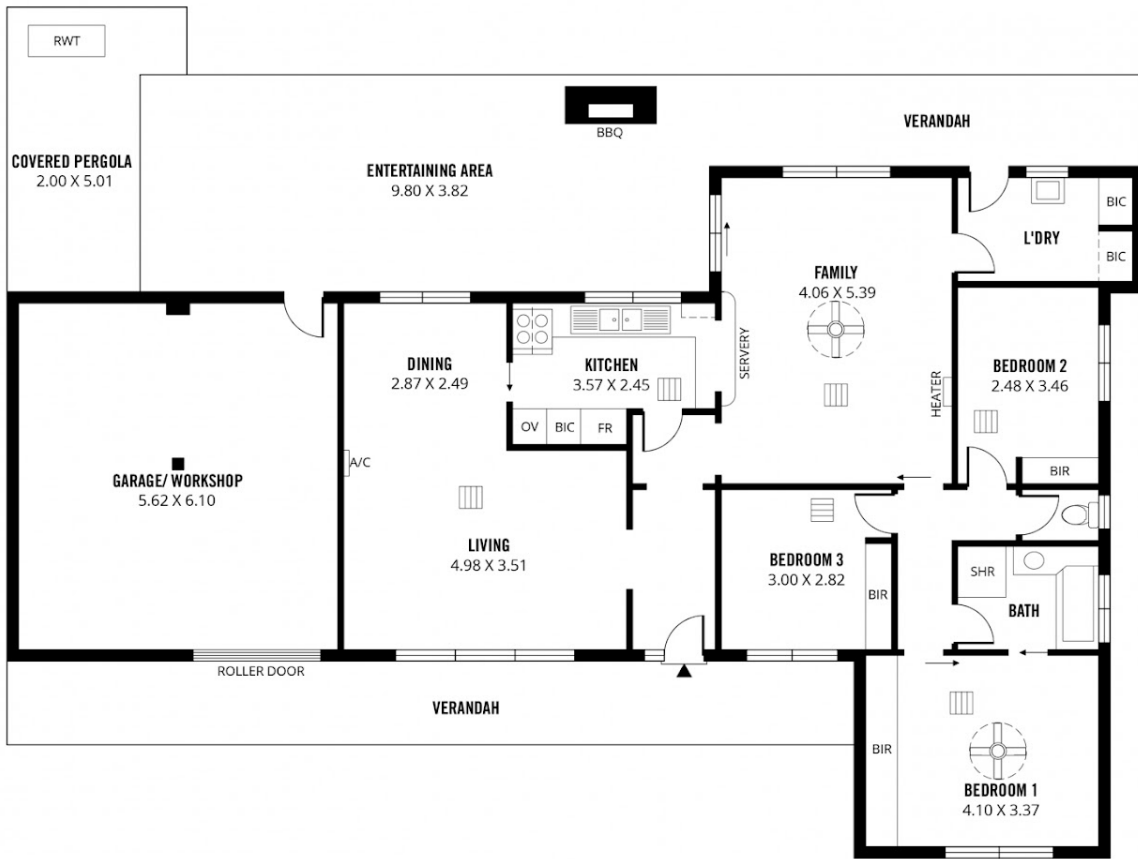
3 BED | 1 BATH | 1 CAR

PRICE:
\$545,000

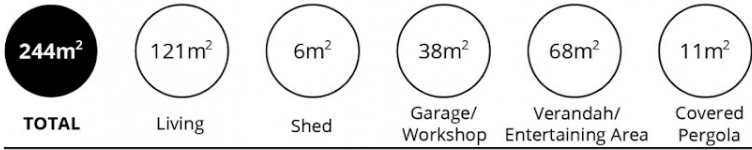
OPEN FOR INSPECTION:
N/A



Simon Tait
0419853945
simon@taitre.com.au
taitre.com.au
RLA: 269823



SHED
3.00 X 1.80



Scale in metres. This drawing is for illustration purposes only. All measurements are approximate and details intended to be relied upon should be independently verified.

Produced by **The Fotobase Group**

Disclaimer: Please note this floor plan is for marketing purposes and is to be used as a guide only. All dimensions are estimates only and may not be exact measurements.

Simon Tait
0419853945
simon@taitre.com.au
taitre.com.au

