



SOLD

NEST OR INVEST

If you are looking for your first home, downsizing or looking for a secure property investment, this property ticks all the boxes and is definitely worthy of your attention.

This immaculate 2 bedroom unit located at the end of a quiet Cul-de-sac is tastefully finished and ready to go for those seeking a home in this popular Eastern Shore suburb, with nothing more to do than just move in and enjoy.

Spread over two levels, the upper level provides:

- A large open plan kitchen - dining-living area complete with a north facing sundeck.
- Views over Ralphs Bay can be enjoyed from the dining/kitchen.
- Fujitsu Reverse cycle heat pump.
- Well proportioned kitchen complete with Westinghouse refrigerator, Ariston dishwasher, Palmera under-bench oven and cooktop.

The lower level with internal access from the garage you will find:

- 2 good sized bedrooms, both with built-in-robos.
- Spacious two-way bathroom.
- Separate W.C.
- Electric Wall heater
- Access to the easily maintained rear yard complete with another timber deck and a private paved seating area.

The unit is one of five within the complex and is professionally managed, including a sinking fund.

The suburb of Oakdowns is serviced by local shops, hairdressers, doctors and cafes whilst being only 5 minutes from the soon to be opened Glebe Hill shopping centre.

Do not miss out on this well positioned, well maintained unit.

The Vendor reserves the right to accept an offer at any time during the marketing period.

All measurements are approximate and details intended to be relied upon should be independently verified. The particulars contained in this advertisement do not form any contract. While care has been taken in its presentation, no representation is made and no responsibility is accepted for the accuracy of the whole or any part and interested persons are advised to make

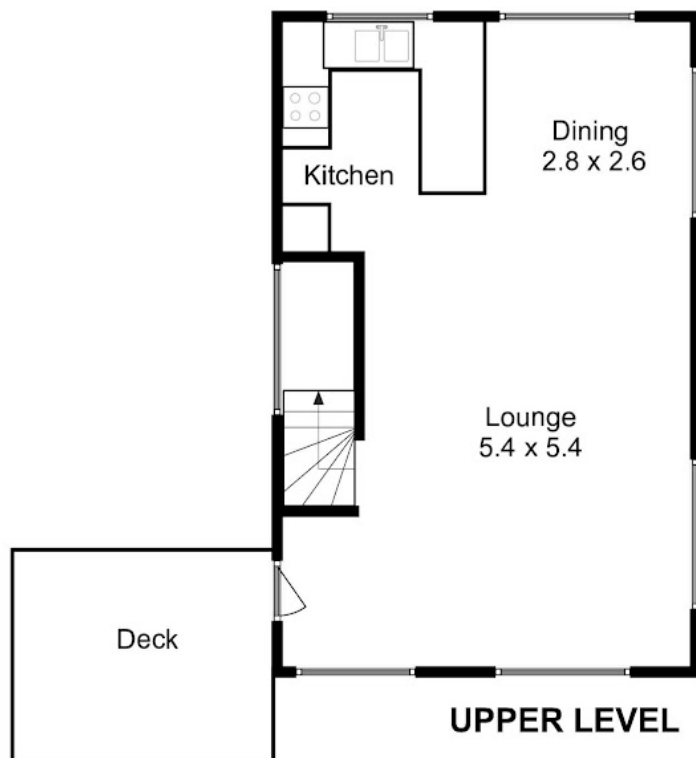
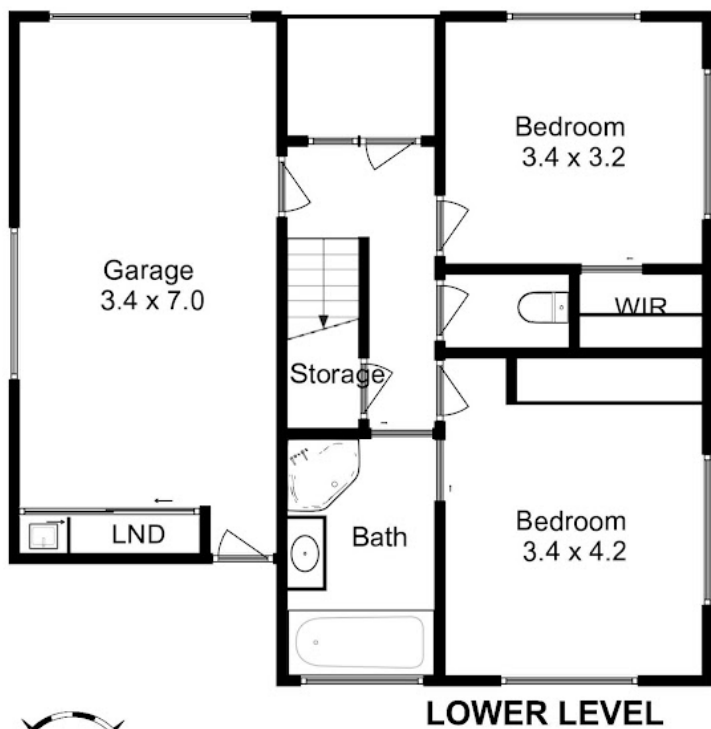
2 BED | 1 BATH | 2 CAR

PRICE:
\$595,000

OPEN FOR INSPECTION:
N/A



Steve Fulton
0419724009
stevef@atrealty.com.au
www.atrealty.com.au



Please Note : This floor plan is for marketing purposes and is to be used as a guide.
Produced by Promote Property Marketing



Disclaimer: Please note this floor plan is for marketing purposes and is to be used as a guide only. All dimensions are estimates only and may not be exact measurements.