



SOLD

COUNTRY LIVING, GREAT LOCATION

the city with views of Mount Gambier.

This charming Character home which has been upgraded through the years. sits on a level allotment measuring 2,972 Sq/m.

Solid Stone home consists of 3 large bedrooms 2 with Double robes, ceiling fans 2 with split system air conditioning and the main bedroom with huge en-suite, double Vanity, built in robes, ceiling fan large windows with Panoramic Views.

Kitchen Meals area has a solid Blackwood Kitchen with Dishwasher and heaps of Cupboard space.

There is a lounge room or TV room off the meals area which leads to large rumpus room with Gas Log Fire and ceiling fan.

From the Kitchen area, there is a small sunroom or office area.

A well-appointed 2nd bathroom complements the family or visitors.

Outside is a real country affair with enclosed backyard for Children and Pets, pop up sprinklers, a bore that keeps the grounds green all year round and Town Water that supplies the house.

A large implement shed with roller door measuring approximately 10m x 8m is perfect for the vehicles, boats, storage, or workshop.

A large stand-alone patio alfresco area over looks the rear yard, patio Blinds make it great for all year-round use, it is an ideal spot to entertain family and friends.

Extras like 2 Hothouses for the green thumb, chook sheds and yards garden shed, and vegetable garden make this home such a great lifestyle allotment.

RLA 269823

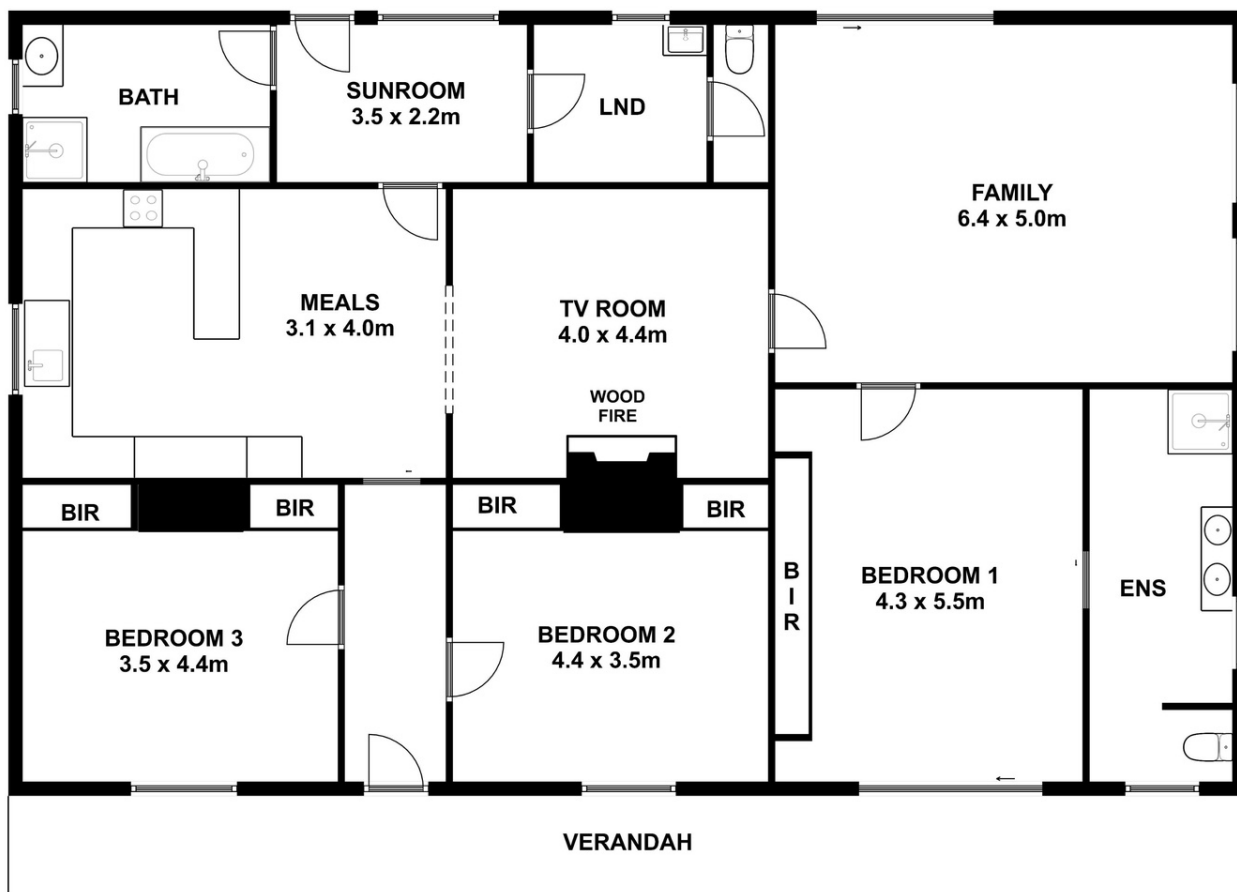
3 BED | 2 BATH | 4 CAR

PRICE:
\$515,000

OPEN FOR INSPECTION:
N/A



Peter Dempsey
0418854393
peterdempsey@atrealty.com.au
peterdempseyatrealty.com
RLA: 269823



This drawing is for illustration purpose only. All measurements are approximate only and information intended to be relied upon should be independently verified.

Disclaimer: Please note this floor plan is for marketing purposes and is to be used as a guide only. All dimensions are estimates only and may not be exact measurements.