

3404/17 AUSTIN STREET, ADELAIDE, SA, 5000



SOLD

EXECUTIVE LIVING IN THE HEART OF THE CITY, BOASTING SWEEPING VIEWS OF THE ADELAIDE HILLS

Situated on the 34th level of the exclusive Sky Residences in the recently completed Realm apartment complex, this beautiful home will simply amaze you. Located in the heart of Adelaide city within walking distance of many amenities including Rundle Mall, North Terrace with its multitude of University campuses, exclusive eateries, trendy bars and many other lifestyle choices. It is obvious that no expense has been spared in the creation of this amazing property and the intelligent flexible floor plan with style, comfort and executive living simply adds to this five star lifestyle experience. Come with us as we introduce you to just some of the many value propositions on show here.

- * Gorgeous open plan kitchen, living and dining area flowing onto the main balcony with its sweeping city and hills views
- * On-trend kitchen with stone benchtops and splash-back, miele appliances including 900mm gas cooktop, 900mm oven, integrated dishwasher and fridge/freezer
- * Good size walk-in pantry and euro-style laundry
- * Study nook
- * Expansive master suite with private balcony access, built-in cupboards and beautiful ensuite featuring dual stone vanities, shower and WC
- * Bedrooms two and three with built-in robes and balcony access
- * Generous family bathroom with stone vanity, shower and WC
- * Block-out blinds throughout
- * Commercial grade glass windows and doors guaranteeing peace and quiet
- * Intercom system with video and audio access to the foyer
- * Not one, but two beautiful balconies offering up amazing city and hills views
- * Oodles of cupboard and linen space throughout the apartment
- * Exclusive lift access for levels 20 and above
- * Two car accommodation, side by side
- * Storage cage
- * Secure access to the building

Other features include:

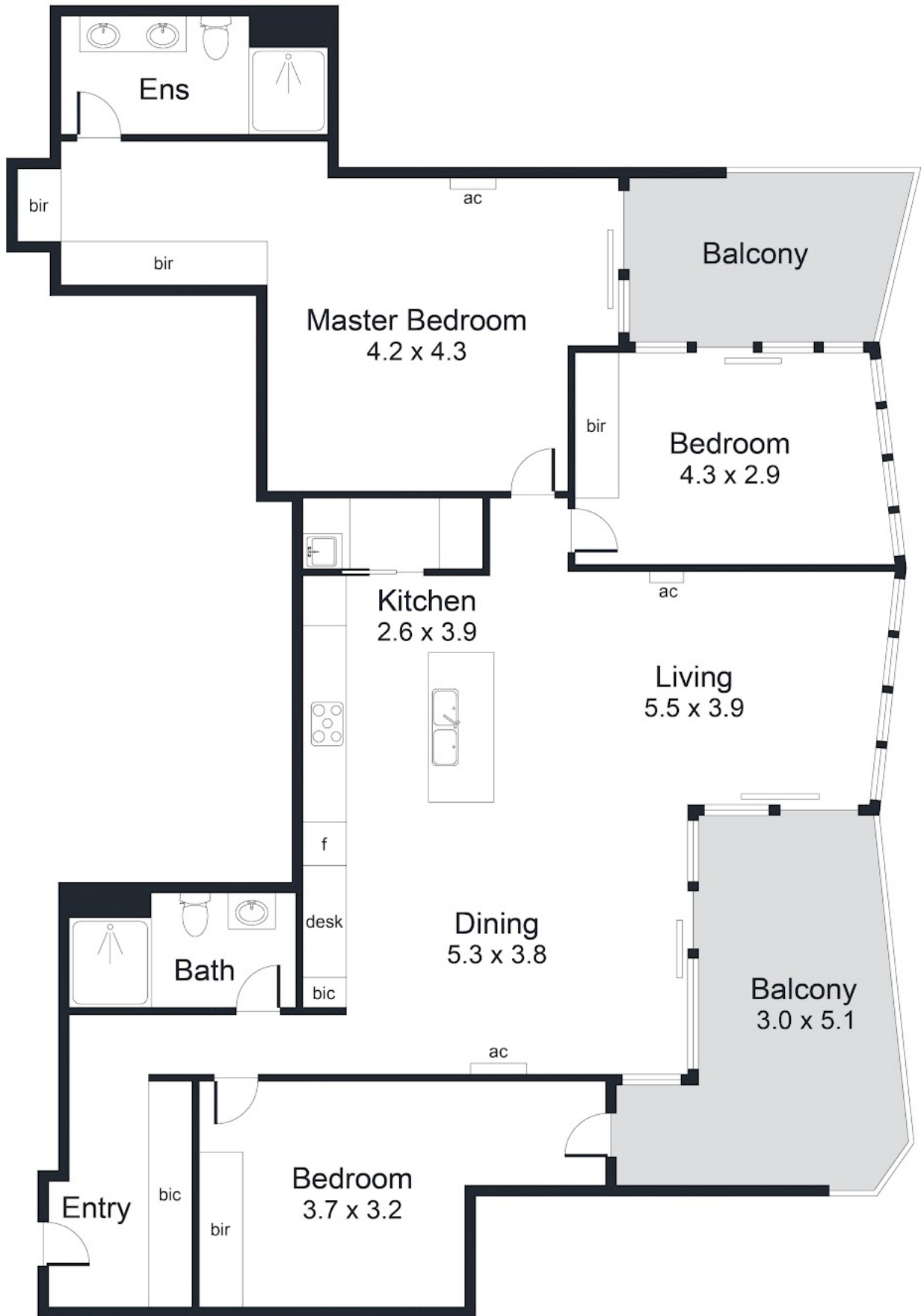
3 BED | 2 BATH | 2 CAR

PRICE:
\$1,500,000

OPEN FOR INSPECTION:
N/A



Gerry & Kathy McGuinness
0410531305
teammac@atrealty.com.au
www.atrealty.com.au
RLA: 269823



Disclaimer: Please note this floor plan is for marketing purposes and is to be used as a guide only. All dimensions are estimates only and may not be exact measurements.

| | |
|--------------|----------------------------|
| Balcony | 25.1 m ² |
| Total | 149.9 m² |

For illustrative purposes only.
All measurements are approximate