

Sold

18 RIVERSDALE BOULEVARD, BANORA
POINT, NSW, 2486



3 | 2 | 2



SOLD BY SUZANNE FOSS

Situated close to the canal with lovely outlooks. This is a perfect home for a young family or those looking to downsize. It is a single level home on a flat block with an outdoor entertaining area and a beautifully landscaped backyard. There is room for a caravan or boat, and if a pool is on your wishlist, there is tons of space for it on the 812m2 block.

The master is spacious with a sparkling new ensuite, garden views and air conditioning. The other bedrooms have built in closets and are separated from the master.

Open plan living is offered with the kitchen overlooking the natural beauty of outdoors and the second living area. The tiled family room is with a study nook. Also, don't miss the spacious walk-in linen closet.

This cleverly planned area is surrounded by restful waterways and canals with pathways and parks surrounding for the leisure of the community. It is close to shops including Tweed City and just minutes from the coastline, gorgeous beaches, and the Gold Coast International Airport. Your choice of schools is also nearby. Call for an inspection, Suzanne Foss 0411 851 173

- Two living areas
- Fans throughout
- Covered outdoor area
- Manicured lawns and gardens
- Safe and secure with security screens throughout
- Quiet residential area

Suzanne Foss // 0411 851 173

suzanne@suzannefossrealestate.com.au // suzannefoss.com.au



Sold

18 RIVERSDALE BOULEVARD, BANORA POINT, NSW, 2486



**Suzanne
FOSS**
REAL ESTATE

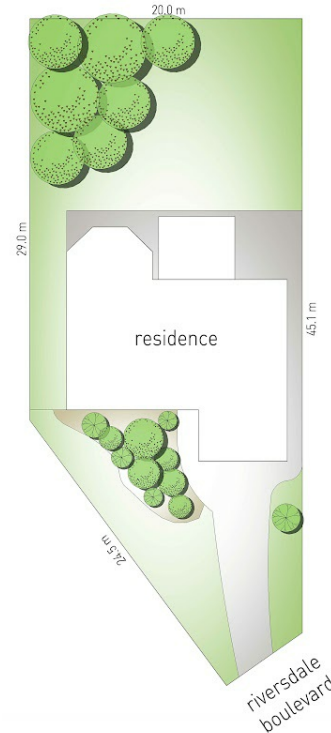
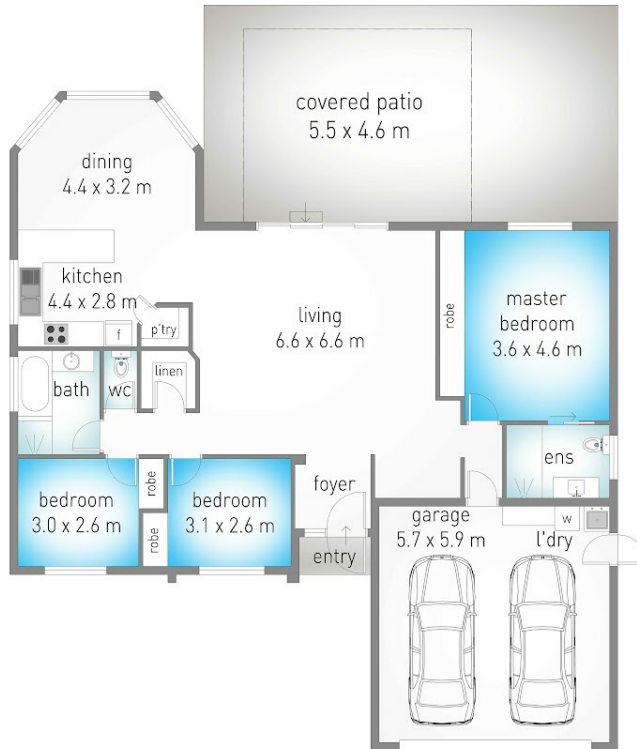
3 | 2 | 2

18 Riverdale Boulevard, Banora Point

3 2 2 819 m²
internal: 160 m² | external: 25 m² | total: 185 m²

@realty

Suzanne Foss 0411 851 173



site plan

Dimensions are approximate. All information contained herein is gathered from sources we believe to be reliable. However we cannot guarantee its accuracy and interested persons should rely on their own enquiries.



Suzanne Foss // 0411 851 173

suzanne@suzanefossrealestate.com.au // suzanefoss.com.au

