



SOLD

FAMILY ENTERTAINER - WITH SO MUCH TO OFFER POTENTIAL FOR GRANNY FLAT AT REAR

NOTE OPEN TIME IS NSW TIME

Set in a fantastic Tweed Heads location on a huge 993m block in a leafy setting with water views over Endless Summer Estate and the spectacular Mt Warning! This home offers 4 Bedrooms, 2 bathrooms, 2 living areas, Pool and so much more

FEATURES :

Upstairs

- * 3 bedrooms with ceiling fans
- * 1 main bathroom includes bathtub separate shower, toilet and built-in laundry
- * Large kitchen with decking off it
- * Dining, Lounge with decking off it.
- * Front deck with canal & hinterland views
- * Large 993sqm block

Downstairs

- * Downstairs area with potential for dual living or games room
- * Large bedroom with built-in robes and double doors to the pool area
- * Lounge and study area with door to the outside entertaining area
- * Double remote lock up garage

Extras

- * 18kw Solar panels - (say goodbye to electricity bill)
- * All modern Bosch appliances
- * Floating floorboards in living areas
- * Heated towel rail in the main bathroom
- * Intercom upstairs and down with remote access to unlock the gate
- * Led Lighting
- * Emergency light

LOCATION :

You will enjoy a short walk to:

4 BED | 2 BATH | 2 CAR

PRICE:

\$1,215,000

OPEN FOR INSPECTION:

N/A



Sharon Smythe

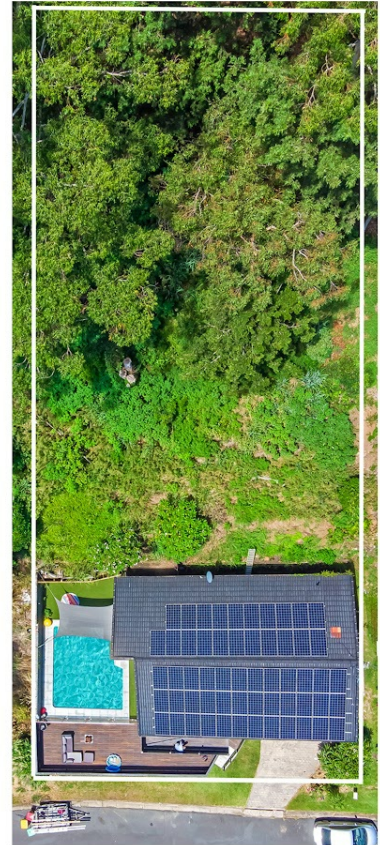
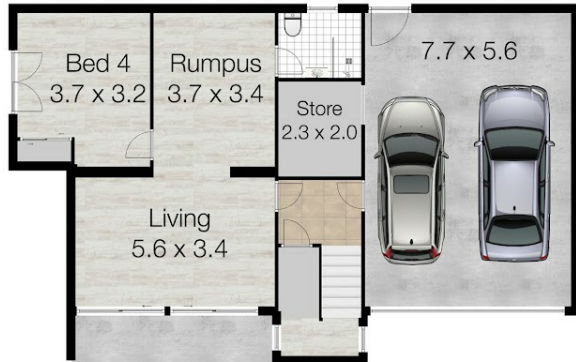
0412195500

sharonsmythe@atrealty.com.au

www.atrealty.com.au

38 Leeward Terrace TWEED HEADS 2485

Total Approximate Floor Area 249 sqm - Total Land Area 992.7 sqm



Whilst every attempt has been made to ensure the accuracy of the floor plan. Measurements of doors, windows rooms and any other items are approximate and no responsibility is taken for any error, omission or misstatement. This plan is for illustrative purposes only and should be used as such by any prospective purchaser.

Disclaimer: Please note this floor plan is for marketing purposes and is to be used as a guide only. All dimensions are estimates only and may not be exact measurements.