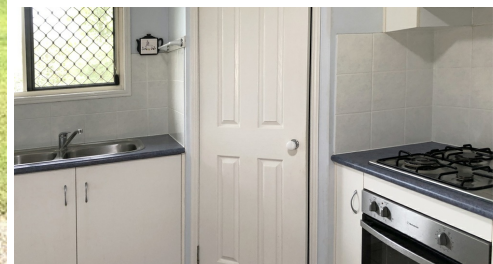




View to west from back yard



SOLD

LARGE FAMILY HOME ON A CORNER BLOCK WITH VIEWS OVER THE PARKLAND RESERVE.

The location of this property will appeal to many home buyers. Situated on a large corner block 901m2 with rural views across the street at the parkland reserve, one can view cattle grazing in the distant paddock.

This corner block has a double gated side access providing plenty of space to park a trailer or caravan.

New double gate and new fence along the back yard boundary. (dog proof). Lovely large private covered in Patio facing the southern side of the back yard

Features of the Home.

- Inviting front entrance that flows in to a large tiled open plan kitchen, dining and living area. A new split system is installed in this area.
- Separate spacious media room.
- Functional kitchen with a pantry, wide bench tops, electric oven and gas cook top with a range hood. Breakfast bare and plenty of cupboard space.
- Master bedroom, walk in robe, new split system, and a generous size ensuite with shower, toilet and vanity.
- 3 additional bedrooms, carpeted two with built in robes.
- Large tiled family bathroom: bath vanity and shower.
- Second separate toilet.
- Tiled Laundry, plenty of cupboard space.
- New Ceiling fans throughout.
- Very private well-presented entertainment area with an extended covered in pagola..
- Double lock up garage with shelving, work bench and internal access..
- Easy care shady garden, drip irrigation, 2 rain water tanks.
- Two garden sheds side by side, cement floor, providing extra storage
- Solar hot water
- Solar system.
- Security screens and doors.

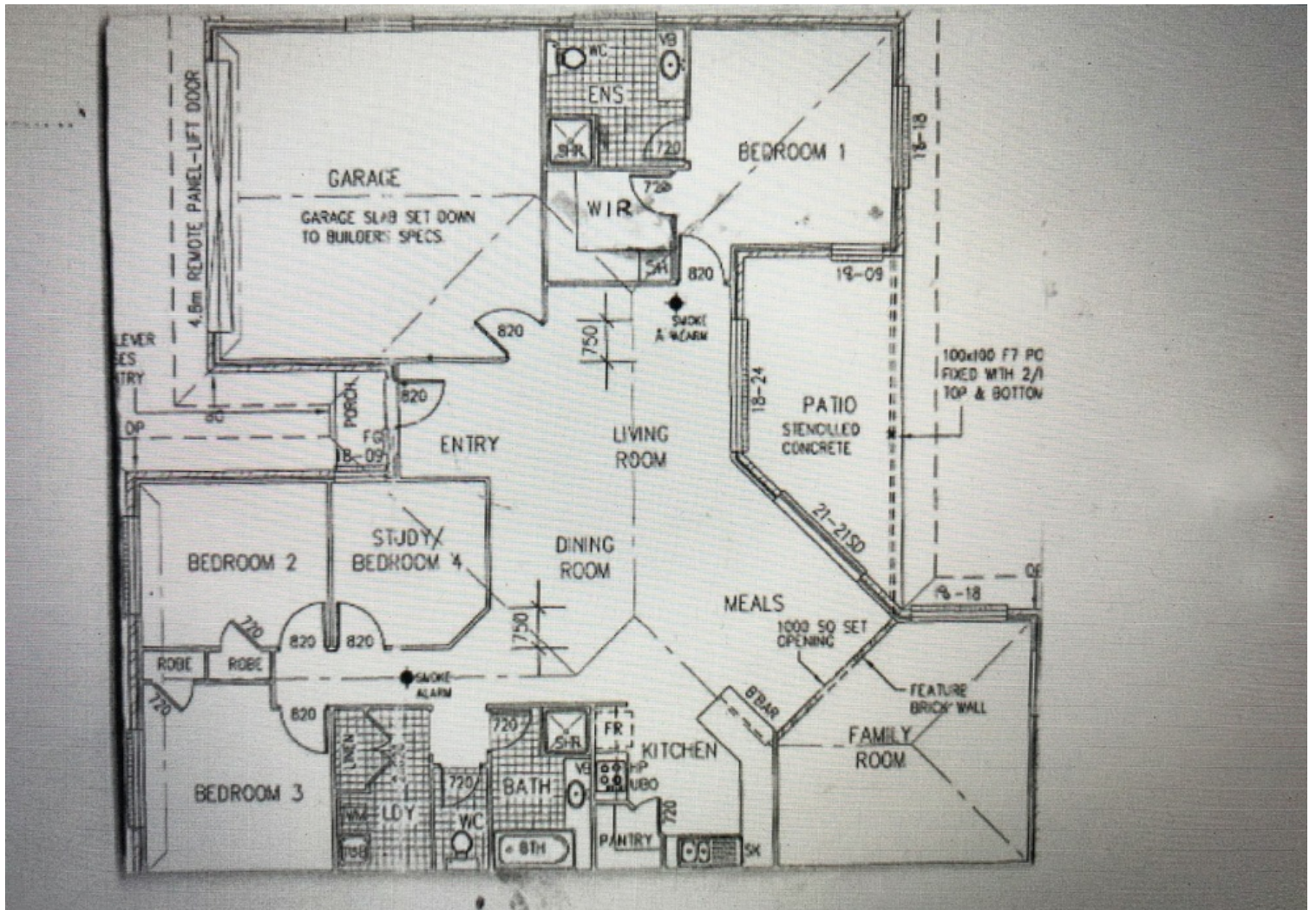
4 BED | 2 BATH | 2 CAR

PRICE:
\$435,000

OPEN FOR INSPECTION:
N/A



Yvonne Bradley
0408181146
yvonne@atrealty.com.au
www.atrealty.com.au



Disclaimer: Please note this floor plan is for marketing purposes and is to be used as a guide only. All dimensions are estimates only and may not be exact measurements.