

**SOLD**

## EXCITING NEW RELEASE! MODERN BEACHSIDE MASTERPIECE, 5 BEDROOMS, 3 MULTI PURPOSE LIVING AREAS, 3 BATHROOMS, POOL AND MORE

This stunning near new home was created by award winning local builder Creative Structures. With its contemporary street appeal, clean lines and stunning mix of materials, it combines style with luxurious family living. It's situated on a stand alone corner block of 446m<sup>2</sup> in an enviable location just moments from beautiful Somerton Beach.

The home has everything (detailed list below), from 3m ceilings to the ground level, high end appliances and carefully curated 'on trend' finishes throughout.

Entering this home through the oversized 1200mm front door, there is a wide central corridor designed as a gallery style space to hang your favourite artworks. This is a pivotal point in the home which connects the two levels of the home and the two main entry points.

The rear of the lower level consists of a large open plan living area, zoned into generous kitchen, dining and living spaces. Perfectly appointed, adjacent the dining space, is a sophisticated and show stopping wine room. The award winning kitchen seamlessly flows onto the indoor and outdoor entertaining areas and boasts a butler's pantry, Dekton stone benchtops, Polytec joinery, Smeg appliances and a Zip Hydro Tap. Aesthetically, the kitchen is fresh and modern with a classic colour palette of light grey and white with oak, fluted glass and black accents.

The extensive use of the glass wrapping around the rear of the home provides a strong connection with the outdoor zones including the alfresco with outdoor kitchen, sparkling pool, lush, resort style garden and kids play space.

There is a second living room or kids play room directly off the open plan area, with direct external access to the kids outdoor play space. At the front of the home, there is a 5th bedroom with its own adjacent lounge, office or home gym, again with direct external access.

Access to the home from the double garage flows through a dedicated mud space with an abundance of storage, perfect for a family. It sits opposite the laundry, which flows directly out

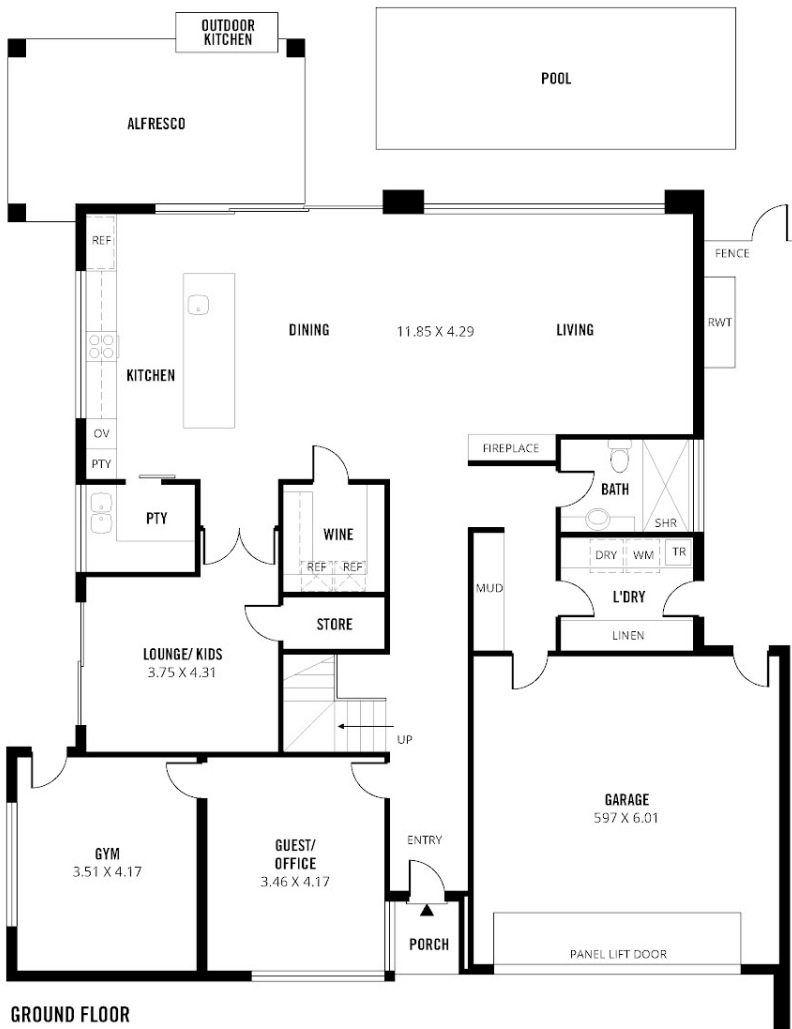
**5 BED | 3 BATH | 2 CAR**

PRICE:  
**\$2,200,000**

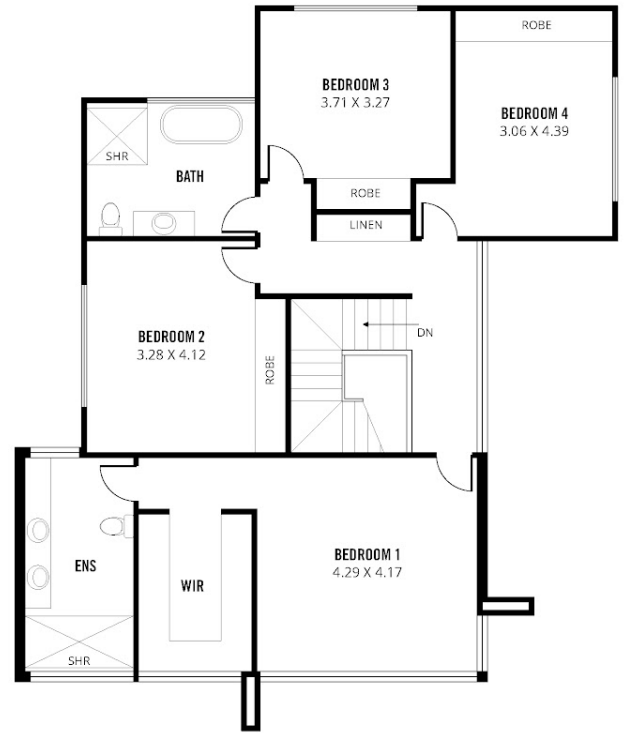
OPEN FOR INSPECTION:  
N/A



**Simon Tait**  
**0419853945**  
simon@taitre.com.au  
taitre.com.au  
RLA: 269823



GROUND FLOOR



UPPER FLOOR



Scale in metres. This drawing is for illustration purposes only. All measurements are approximate and details intended to be relied upon should be independently verified.

Produced by The Fotobase Group

Disclaimer: Please note this floor plan is for marketing purposes and is to be used as a guide only. All dimensions are estimates only and may not be exact measurements.