



**SOLD**

## ANOTHER ONE SOLD BY THE BABET BROTHERS!

Another one SOLD by the BABET BROTHERS!

Contact DeeJ Babet on: 0403 247 200  
Contact Matt Babet on: 0401 861 185

Please follow us on Facebook, YouTube, TikTok and Instagram for regular fresh content search "Babet Brothers Real Estate".

Ladies and Gentleman, we have something special for you today. A beautiful large 3 bedroom family home in a great part of Cranbourne which overlooks a gorgeous park. With a park directly across the road you will never need to look into your neighbours house ever again! This is the perfect home for a growing family! With ample room for children to safely play! This perfect home is situated in the exclusive Park Avenue Estate and is fully renovated from top to bottom with nothing to spend. Simply pack your things and move straight in!

They say properties are all about first impressions, wow, what a first impression! This home has a commanding street presence! Sitting proudly on a generous block and gleaming like a jewel in the crown that is the Park Avenue Estate. Immediately upon walking into the house through the front door you will be left speechless with the quality of this renovation. Absolutely everything has been done for you. Immediately to the left of the front door you will be greeted by the master bedroom of the home. This master is ample in size and features enough room for a large king sized bed and bedside tables with plenty of room to spare. The master features decorative pendant lights which give the room a touch of class and opulence only found in the highest end properties on the market today. The master features a large walk-in robe as well as ensuite.

Walking further into the property you are then presented with the first of two living areas. This living area is large in size and is currently set up as the lounge of the home. Featuring a gas fireplace and styled to perfection it is sure to impress.

Moving further into the home you are then presented with the gorgeous contemporary kitchen. This kitchen is the perfect example of modern style and modern living. With stainless steel oven, stainless steel dishwasher, stainless steel range hood and quality fixtures and fittings you are

**3 BED | 2 BATH | 2 CAR**

**PRICE:**  
\$712,000

**OPEN FOR INSPECTION:**  
N/A

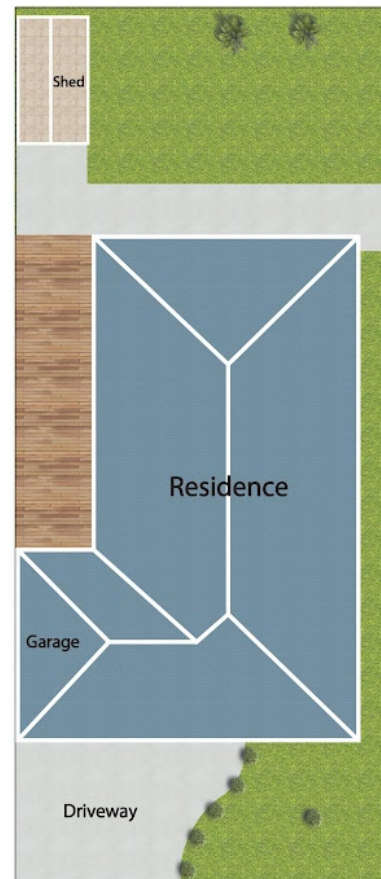


**Matt Babet**  
**0401861185**  
mattbabet@atrealty.com.au  
[www.atrealty.com.au](http://www.atrealty.com.au)

# Floor Plan



# Site Plan



Disclaimer: Please note this floor plan is for marketing purposes and is to be used as a guide only. All dimensions are estimates only and may not be exact measurements.

\* Dimensions are approximate and for illustrative purposes only