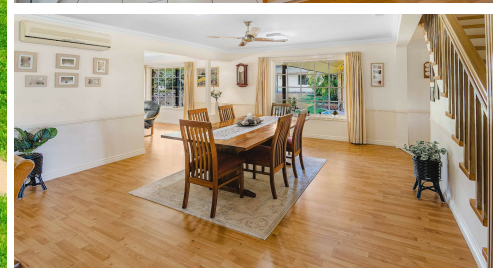


1/210 LEACH ROAD, TAMBORINE, QLD, 4270



SOLD

STYLISH ACREAGE HOME + GRANNY FLAT OPEN SAT 12 FEB 1.00-2.00PM

From the moment you walk through the door, this home oozes Style and Quality with a touch of old world charm

Suitable for horse lovers, the extendard family or anyone who appreciates style.

THE MAIN HOME

Great outlook across the property to the Dam

Double brick and steel frame,

3 Bedrooms

2 Bathrooms

New kitchen around 6 years ago

Fans through out

3 Split air conditioners

GRANNY FLAT

Studio style with kitchen and its own

Patio at the rear. Great for Mum or for the teenager.

RUMPUS/ STUDIO/OR AN ADITIONAL BEDROOM (PONTENTIAL FOR A SECOND GRANNY FLAT)

This large room is connected to the home by a breeze way. Could have a lot of uses, Rumpus for the kids, dads large office. Big enough to convert to another Granny Flat

Stunning Gardens

9 x 10 Shed with 4.2 door...will fit most big boys toys or floats etc.

Chook Pens

Large Dam that can pump up to the top of the property.

This is really worth checking out. Call Trevor Parker on 0421361608

5 BED | 3 BATH | 4 CAR

PRICE:

\$1,210,000

OPEN FOR INSPECTION:

N/A



Trevor Parker

0421361608

trevorparker@atrealty.com.au

www.atrealty.com.au