



SOLD

QUIET & PRIVATE, GROUND LEVEL AND NEAT AS A PIN!

This two bedroom secret in Stuart Park features two large spacious bedrooms, is ground level unit with long setback from the street is hidden away and provides a nice retreat to get away from the hustle and bustle of larger complexes.

The unit offers fresh and light modern decor, fully tiled floors and air conditioned with split systems throughout. Privacy is outstanding in this stand alone unit in a small complex of only 4 in the heart of Stuart Park.

Features include

- Two larger than usual tiled and air conditioned bedrooms each with its own walk in robe
- High ceilings offer space and light
- Louvred windows and security screens
- A galley style kitchen with breakfast servery bench, dishwasher and pantry
- Carport with access direct to front door
- Additional car space out front
- Large roomy bathroom
- Internal laundry
- An internal mezzanine platform for additional storage
- Outdoor patio area is secured and shaded and offers a nice entertaining area with a great paved courtyard space to relax
- Small garden shed
- Walking distance to shops, transport, gym, medical & restaurants and more
- Just 1.5km to Darwin CBD, walk, bike bus or quick car trip and close proximity to Parap Village with Saturday Markets
- Well presented complex of only 4 units
- Solar hot water
- Pets allowed with body corporate approval

Darwin City Council Rates : approx \$1550 per year

Whittles Body Corporate : approx \$ 1430 per qtr

Status : Vacant Possession

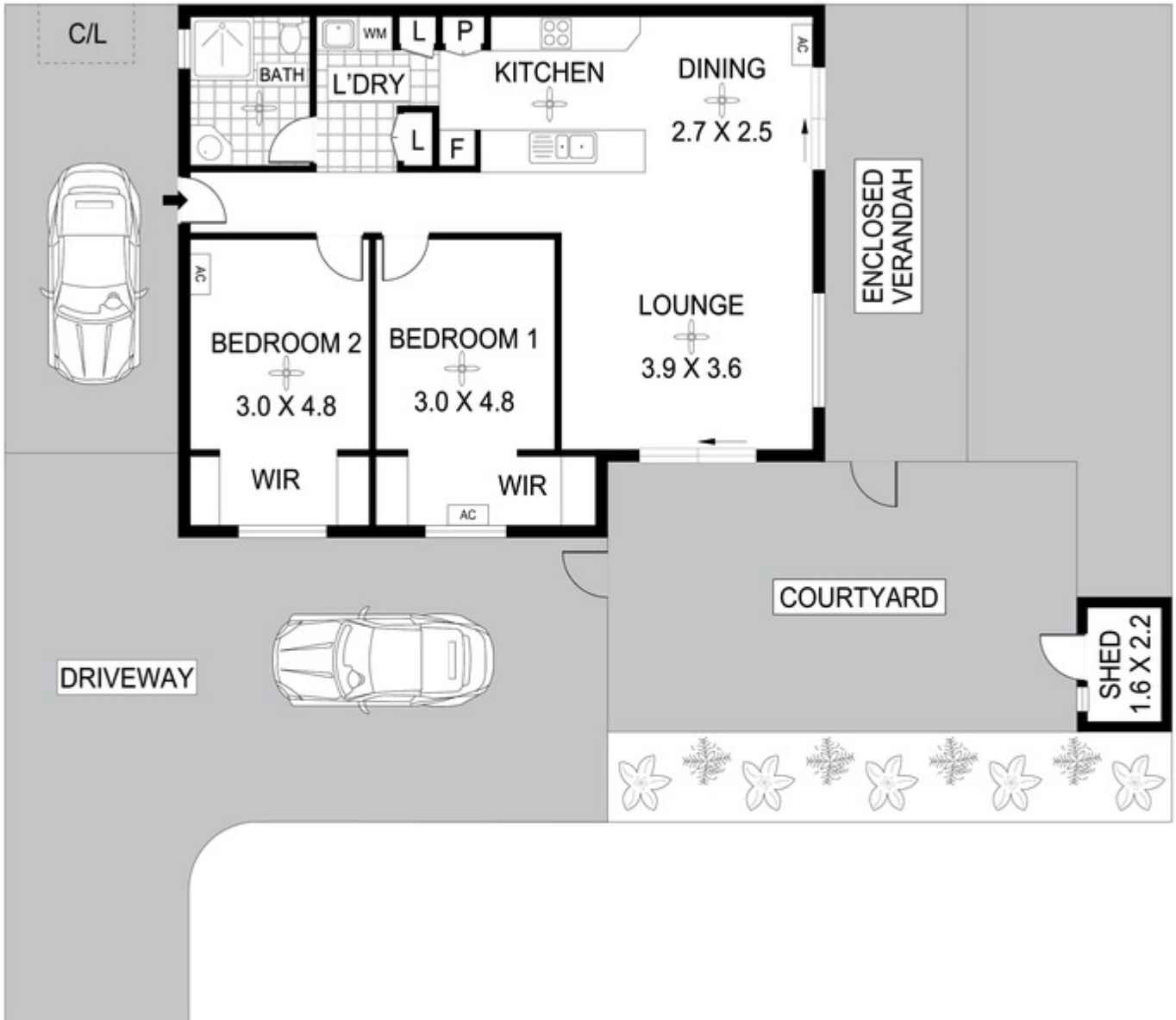
2 BED | 1 BATH | 1 CAR

PRICE:
\$370,000

OPEN FOR INSPECTION:
N/A



Nicole Wheeler
0417508800
nicolewheeler@atrealty.com.au
www.atrealty.com.au



Disclaimer: Please note this floor plan is for marketing purposes and is to be used as a guide only. All dimensions are estimates only and may not be exact measurements.

2-20 Charles St, Stuart Park

Nicole Wheeler
 0417508800
 nicolewheeler@atrealty.com.au
 www.atrealty.com.au

