



**SOLD**

## FABULOUS FAMILY HOME IN PERFECT LOCATION

This stunning 2007 built property will not last long. Boasting approx 250sqm of internal living space and set on a great sized 626sqm elevated block it is situated in a whisper quiet and tightly held pocket of Settlers Hills Private Estate, walking distance to the gorgeous Steel Tree Reserve, Settlers Hills Primary School and Tranby College. It is the perfect home for the growing family and an early viewing is strongly recommended.

Accommodation briefly comprises;

- \* Gorgeous entrance hallway with high ceiling, access to huge oversized garage and a separate double coat closet
- \* Large separate study or 4th bedroom
- \* Stunning open plan main living space with meals, family and games zones
- \* Huge well appointed kitchen with heaps of storage, stone bench tops, overhead cupboards, feature bulkhead, appliance cupboard, 2 x ovens and access to a large walk in pantry
- \* Double doors through to lounge room/theatre room with feature recessed ceiling and built in speakers
- \* Separate guest wing comprises 2 queen-sized bedrooms with double robes in each, guest bedroom 2 being semi en-suite
- \* Modern family bathroom family with separate renovated powder room, practical renovated laundry room with storage
- \* Gorgeous master bedroom located at the rear of the property with access to back yard, modern recently renovated en-suite and his/hers walk in robes
- \* The resort style living area overlooks the low maintenance and very private backyard, paving and artificial turf mean your time can be spent relaxing and enjoying the outdoor entertaining space all year round
- \* Triple remote garage with extra height clearance, sink with hot & cold water, wiring in place for 3 phase power & access to boarded attic space

The property also benefits from;

- \* Daiken reverse cycle ducted air conditioning throughout and gas hot water system
- \* 5kw solar power system with 20 panels
- \* Plantation shutters in main living area and theatre room
- \* Stunning solid timber flooring and gorgeous tiling in main living area

**4 BED | 2 BATH | 3 CAR**

**PRICE:**  
\$650,000

**OPEN FOR INSPECTION:**  
N/A



**Lisa Drylie**  
**0433048512**

[lisdrylie@atrealty.com.au](mailto:lisdrylie@atrealty.com.au)

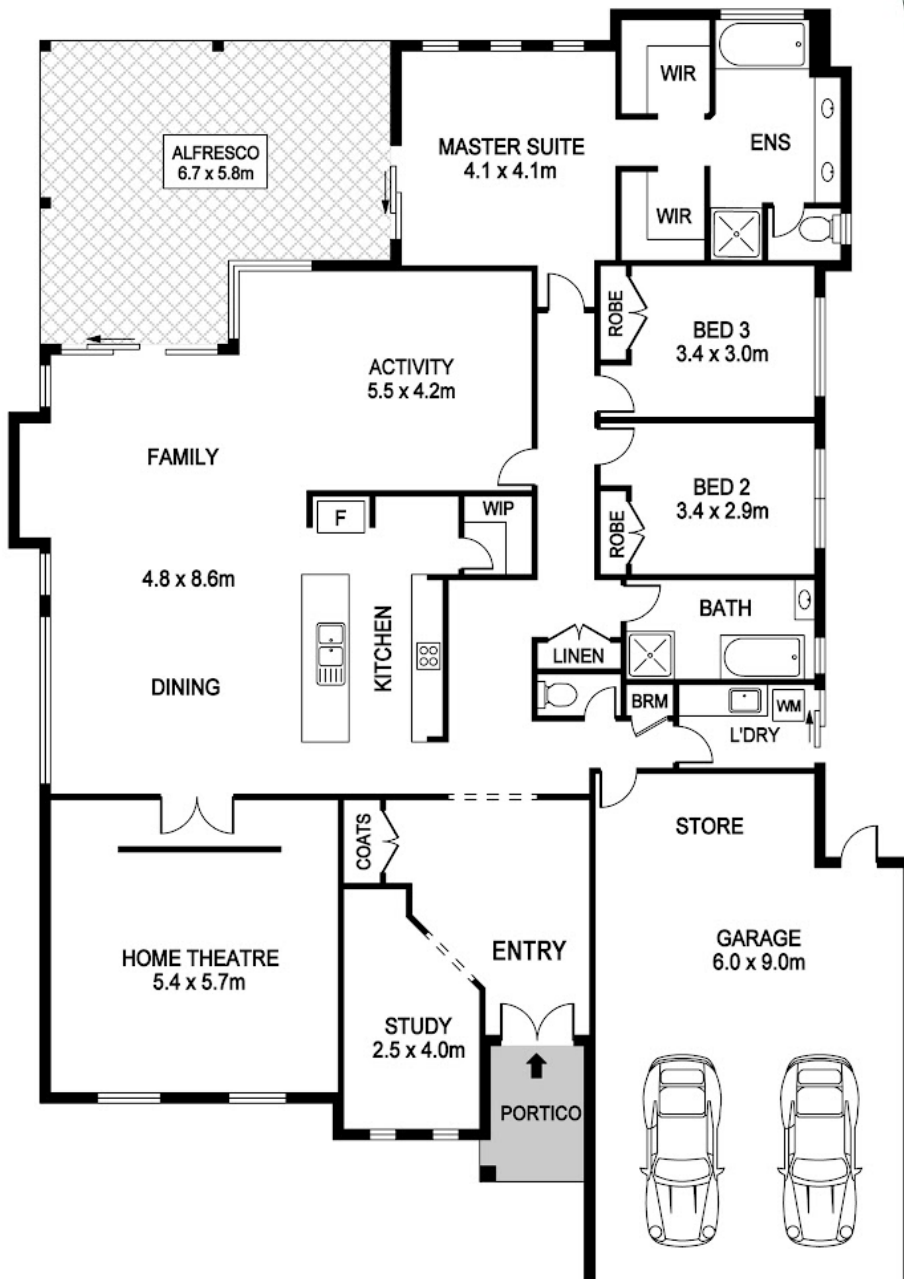
[www.lisadrylierealestate.com](http://www.lisadrylierealestate.com)

# 9 Waring Heights BALDIVIS



Block Size 626m<sup>2</sup> | 3 Bedrooms | 2 Bathrooms | 2 Car  
Internal 246m<sup>2</sup> | External 100m<sup>2</sup> | Total 346m<sup>2</sup>

Lisa Drylie | 0433 048 512



Disclaimer: Please note this floor plan is for marketing purposes and is to be used as a guide only. All dimensions are estimates only and may not be exact measurements.



REAL ESTATE FLOOR PLANS | [houseguru.com.au](http://houseguru.com.au) | © House Guru Real Estate Photography™

Whilst every attempt has been made to ensure the accuracy of the floor plan contained here, measurements of doors, windows, rooms and any other items are approximate and no responsibility is taken for error, omission or mis-statement. This plan is for illustrative purposes only and should only be used as such by any prospective purchaser. The services systems and appliances shown have not been tested and no guarantee as to their operability or efficiency can be given.

**Lisa Drylie**  
0433048512  
[lisdrylie@atrealty.com.au](mailto:lisdrylie@atrealty.com.au)  
[www.lisdrylierealestate.com](http://www.lisdrylierealestate.com)

