



**SOLD**

## VICTORIA TOWERS OVER 50'S LUXURY RETIREMENT STYLE LIVING 3 BEDROOM NORTH EAST CORNER WITH OCEAN VIEWS

CALL JACKIE TAYLOR-FOX 0411236823 TO BOOK AN INSPECTION TODAY

Inspect VICTORIA TOWERS OVER 50'S FREEHOLD APARTMENTS - Enjoy the Retirement Lifestyle you Deserve.

This spacious apartment offers the perfect combination of stunning views, convenience, luxury and security. With the added bonus of a sought after north-easterly aspect, this is a clear winner when looking for your next property.

- \* Luxuriously appointed apartment in this resort-inspired complex offering the dream retirement lifestyle.
- \* Freehold apartment with very reasonable body corp fees
- \* Quality fittings and fixtures throughout with imported tiles and 100% wool carpets
- \* Impressive galley style kitchen with stone bench tops and stainless steel Smeg appliances
- \* Open plan living room that takes advantage of the view and the afternoon sea breezes
- \* Magnificent OCEAN views from the large balcony which is great for entertaining
- \* Main bedroom with walk-in robe and fully-tiled ensuite
- \* Newly Painted and New Carpet throughout - comes with LARGE STORAGE ROOM in basement
- \* Two extra bedrooms with built-in robe - extra bathroom with bathtub and stone top vanity
- \* Ducted reverse cycle air-conditioning throughout for year round comfort
- \* Resident's lounge, pool, BBQ, Library, Full Professional GYM
- \* 24/7 security with ONSITE MANAGEMENT and 3 Levels of Basement Parking
- \* 4 level aged care facility beds, Close to UNI Hospital and Medical Precinct
- \* Secure Freehold Strata Title with NO EXIT FEES
- \* Centrally Positioned near Australia Fair Shopping Centre with all major SHOPS
- \* Close to the best restaurants and the Broadwater & Light rail at your doorstep

CALL JACKIE TAYLOR-FOX TO SECURE YOU INSPECTION APPOINTMENT 0411236823

**3 BED | 2 BATH | 1 CAR**

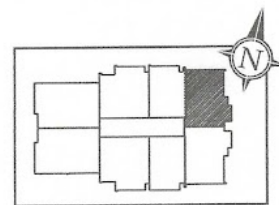
**PRICE:**  
\$990,000

**OPEN FOR INSPECTION:**  
N/A



**Jackie Taylor-Fox**  
**0411236823**  
jackietaylorfox@atrealty.com.au  
[www.atrealty.com.au](http://www.atrealty.com.au)

FLOORPLAN - TYPE A-NE  
LEVELS 7 - 14



3 BEDROOM

Internal Area	118m <sup>2</sup>
Balcony	16m <sup>2</sup>
<b>Total</b>	<b>134m<sup>2</sup></b>

Disclaimer: Please note this floor plan is for marketing purposes and is to be used as a guide only. All dimensions are estimates only and may not be exact measurements.