



SOLD

TRADITIONAL, TROPICAL ELEVATED WITH INGROUND SPA

Live the elevated lifestyle with this fabulous home nestled in arguably one of the best streets in Moil. This two storey fully air-conditioned home offers the perfect family lifestyle in popular Moil, a highly sought after suburb Northern Suburbs pocket, close to schools, shopping centres, the University, sporting facilities and the airport.

Featuring :

- Three large upstairs bedrooms
- Built in robes
- Freshly painted internally
- Loads of storage space downstairs
- A functional galley style kitchen with lots of bench and cupboard space
- Polished timber floor boards
- Renovated upstairs bathroom
- Spacious living and dining area
- A front verandah
- A double carport
- In-ground rear spa
- Full perimeter fencing
- A second bathroom downstairs
- Side paved area
- space for boats, trailers or caravans

Land Area 715m2

DCC Rates : approx \$1500 per year

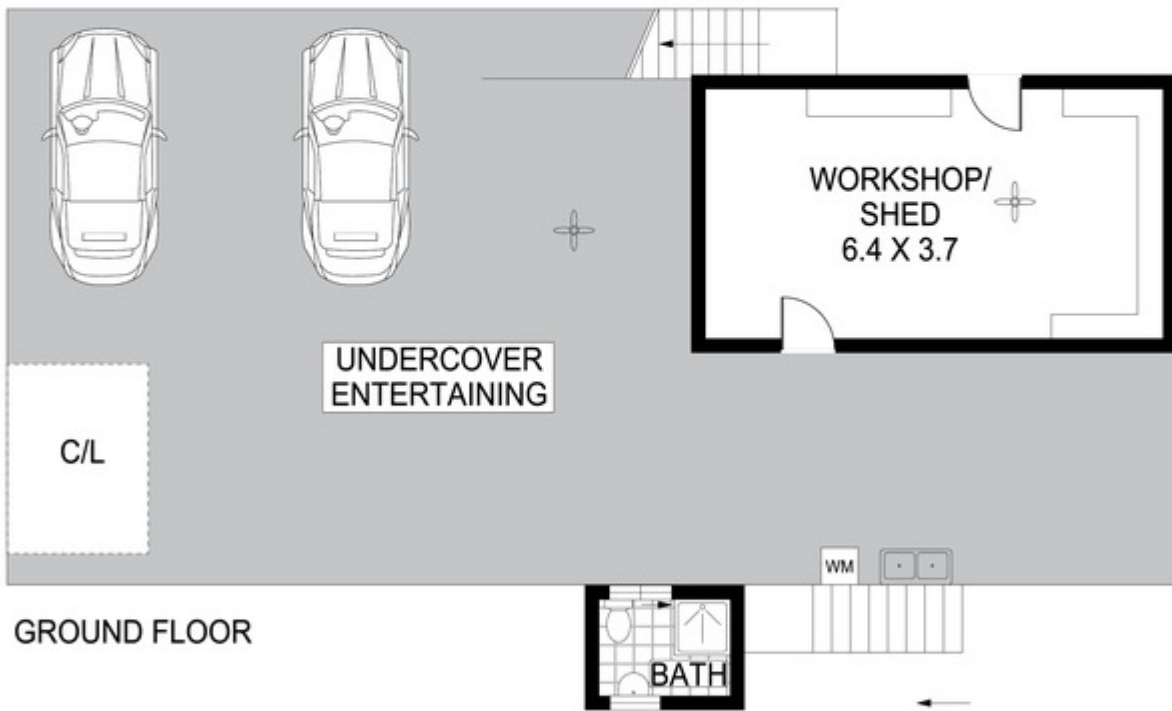
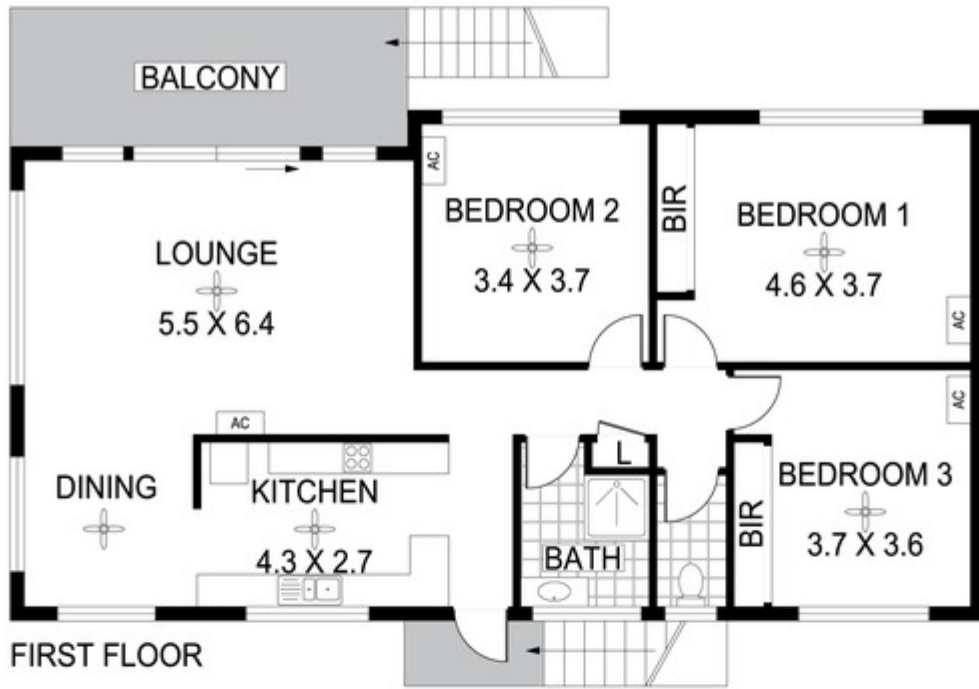
3 BED | 2 BATH | 4 CAR

PRICE:
\$580,000

OPEN FOR INSPECTION:
N/A



Nicole Wheeler
0417508800
nicolewheeler@atrealty.com.au
www.atrealty.com.au



Disclaimer: Please note this floor plan is for marketing purposes and is to be used as a guide only. All dimensions are estimates only and may not be exact measurements.

10 Thornton Crescent, Moil

Nicole Wheeler
0417508800
nicolewheeler@atrealty.com.au
www.atrealty.com.au

