

SOLD

TRADITIONAL QUEENSLANDER ON THE FAMOUS FOUR MILE BEACH PORT DOUGLAS

This is a rare find on the beautiful four-mile beach in Port Douglas. Sitting on a corner allotment of 917 sqm is this a one-of-a-kind Timber Highset Queenslander Home with huge bullnose wrap around verandas on 3 sides; Perfect for out-door living and enjoying the tropical lifestyle that Port Douglas is renowned for. Every room of the house has beautiful double French doors that open directly onto the veranda, two bedrooms look directly over the Kidney shaped pool. When you enter the house, you're immediately aware of the high 9'6" ceilings which give you a feeling of openness, airiness and space, with Silky Oak Timber finishes throughout and featured in the kitchen and timber floors leading you seamlessly through the house. Spectacular huge casement windows all around the living area allow you to relax and enjoy the view from the comfort of your lounge whilst enjoying the coolness of the solar powered industrial sized ceiling air conditioner. Every bedroom has ceiling fans and reverse cycle air conditioning, 3 bedrooms are within the house with a fourth accessed from the veranda with its own private entrance and powder room, making it a perfect office for working from home without distractions. Main bedroom has a huge ensuite including a shower/spa bath. The pool benefits by a newly installed heater making it a perfect temperature for all year usage. The huge double lock up garage is set back from the house and is ideal for those who wish to expand their hobbies. Water restriction are no problem as there is a working bore which allows you to irrigate and water the garden anytime without restraint, perfect for establishing your dream tropical garden. Opportunities abound to create an Airbnb business or for the astute investor to further develop the site.

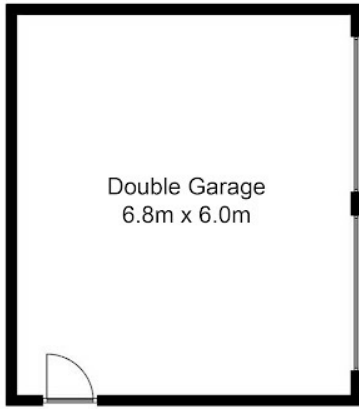
4 BED | 3 BATH | 2 CAR

PRICE:
\$1,050,000

OPEN FOR INSPECTION:
N/A

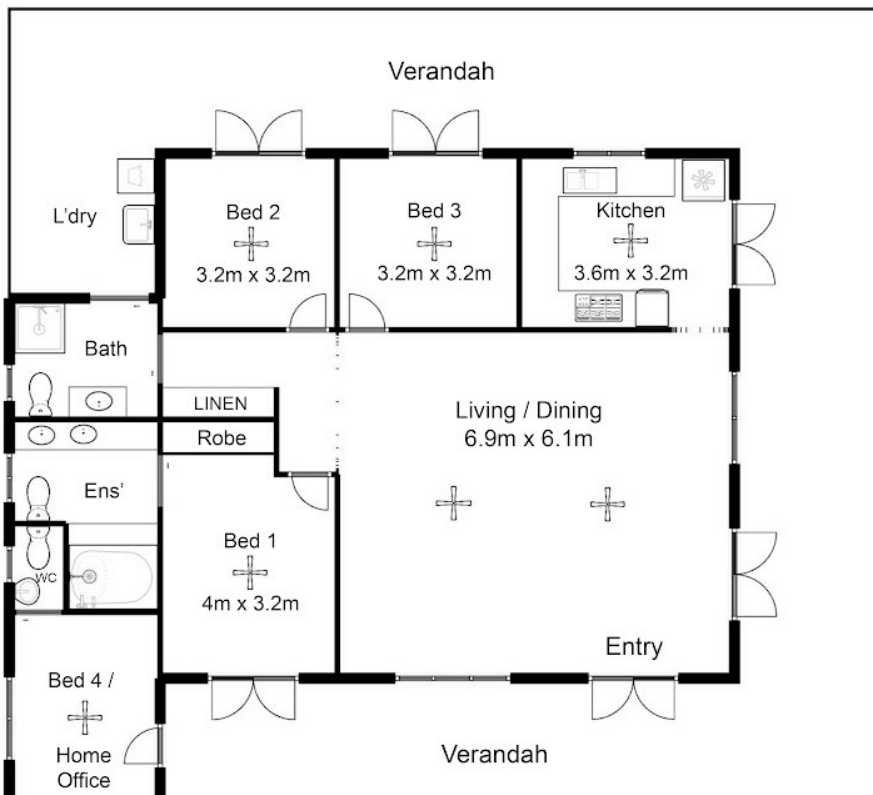
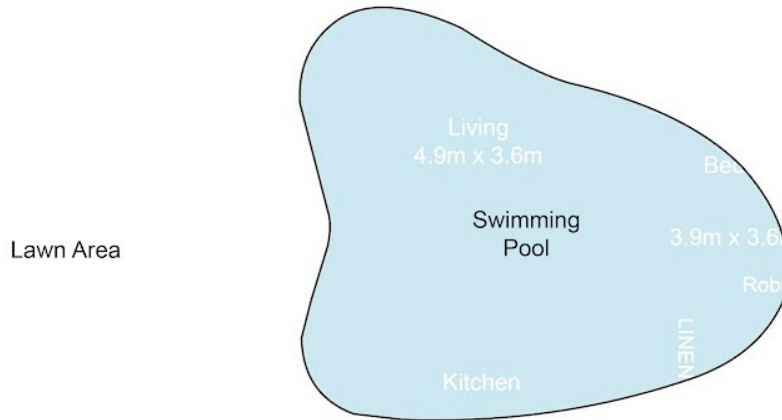
@realty

Vernon Clarke
0419709450
vernon.clarke@atrealty.com.au
www.atrealty.com.au



PORT DOUGLAS

17 Langley Road



Disclaimer: Please note this floor plan is for marketing purposes and is to be used as a guide only. All dimensions are estimates only and may not be exact measurements.

completeness of the floor plan. You or your advisors should conduct a careful, independent investigation of the property to determine to your satisfaction as to the suitability of the property for your space requirements.