



# SOLD

## LOCATION AND DUAL LIVING IS CALLING YOU!

I am so Proud to Present you with Number 34 Mitta Crescent, Narangba.

This exclusive property welcomes you from the moment you walk in the door, and instantly makes you feel like you're walking onto the cover of a glossy magazine!

Breathtaking is the only way to describe this showcase home that has just been freshly painted internally. The open plan design allows seamless indoor outdoor flow, whilst privacy has still been thought of. At just over 300m<sup>2</sup>, the spaciousness provides Dual Living if you wish by simply closing a door and allows you to have 2 separate bedrooms, (Master with Ensuite and Walk in Robe) Living Room and Kitchenette.

Allround there are 5 Bedrooms, the Main Master Bedroom has an Open plan Ensuite with Two Vanity sinks, Massive Shower, Corner Spa Bath, and a Separate Toilet.

The Kitchen has all the Mod Cons and is positioned so that you can mingle with guests inside as well as look out to the Pool and Large Undercover Entertaining area - this really is the Entertainers dream! There is also a Gazebo in the back corner of the yard overlooking the pool which is a great space to relax and unwind.

### Features:

- \* 5 Bedrooms
- \* Dual Living Option
- \* Open Plan
- \* Ducted Air Conditioning - Zoned
- \* Inground Pool
- \* 6KW Solar Panels on Roof (24 Panels)
- \* 4 Car Accommodation, Garage with remote Tilt Door
- \* Side Access
- \* Fully Fenced 1326m<sup>2</sup> Block
- \* Prime Position in Cul-de-sac

This Amazing Home is located just a short distance from the local shops, and is in the catchment for Narangba Valley State School, Narangba Valley State High School.

- \* 2 Minutes to Woolworths, Tavern, Schools and Local Shops
- \* 7 Minutes to Bruce Highway

5 BED | 3 BATH | 4 CAR

PRICE:  
\$993,000

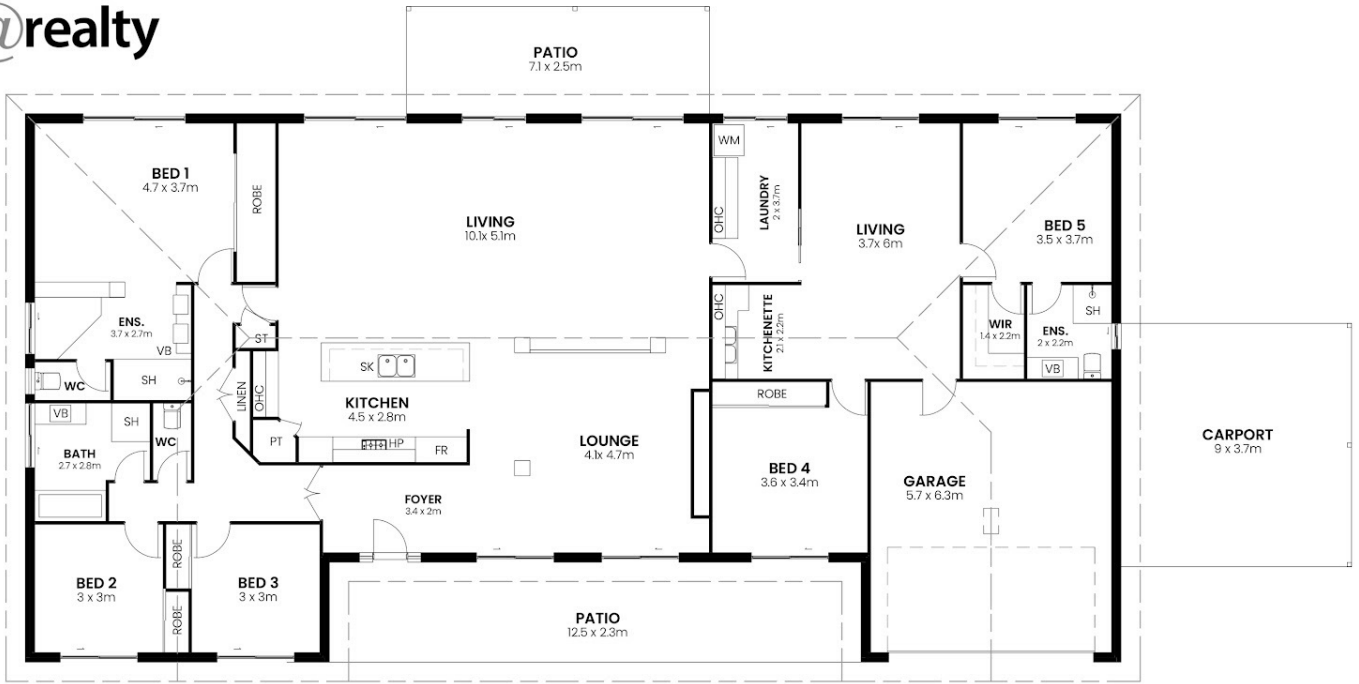
OPEN FOR INSPECTION:  
N/A



**Phill Healey**  
**0414452244**

phill.healey@atrealty.com.au

[www.atrealty.com.au](http://www.atrealty.com.au)



Areas	
LIVING	301 <sup>m2</sup>
PATIO (rear)	18 <sup>m2</sup>
PATIO (front)	29 <sup>m2</sup>
<b>Overall</b>	<b>348<sup>m2</sup></b>

**DISCLAIMER**  
 This illustration has been drawn accurately. However, interested parties should consult official architectural drawings for specificity regarding areas and dimensions.

Disclaimer: Please note this floor plan is for marketing purposes and is to be used as a guide only. All dimensions are estimates only and may not be exact measurements.