



Keyline is for visual purposes only.

# SOLD

## BEAUTIFULLY DESIGNED METRICON HOME WITH ALL THE MOD CONS INCLUDING SIDE ACCESS

You have to see this beautifully designed Metricon home to appreciate all of the great features it has to offer. Only just over five years old and built on a generous 718 sqm block within walking distance to the Pacific Harbour Golf & Country Club with its restaurant, bar, gymnasium, swimming pool and tennis courts.

This gorgeous home features four bedrooms, open plan living/dining/kitchen, sitting room/lounge room, multi-purpose room, two bathrooms, powder room and double garage. The home exudes style and elegance with an open-plan design that flows out to a large alfresco patio.

The kitchen features Caesar stone bench tops, 90 cm wide oven, 5 burner gas cook-top, spacious walk-in pantry and a wide refrigerator space. The king-size master bedroom features loads of wardrobe space, en-suite with double sinks and separate toilet. There are built-in robes to the other three queen size bedrooms and the main bathroom is immaculately presented with soaker bath and separate toilet.

The large fenced backyard provides plenty of space for families and enough room to install a swimming pool if needed. An added bonus is the side access gates leading through to a large area big enough to store a caravan or boat and trailer. Look at these additional features:

- 4.5 kws solar power
- Ducted and zoned air-conditioning
- Plantation shutters
- Caesar stone bench tops to kitchen and bathrooms
- Security alarm system
- Internal wired security cameras
- Quality tiles floors to living areas – timber look
- Double garage with shelving
- Automatic irrigation system

If you want a home with everything, then this is for you. Don't miss out, call Geoff (your local

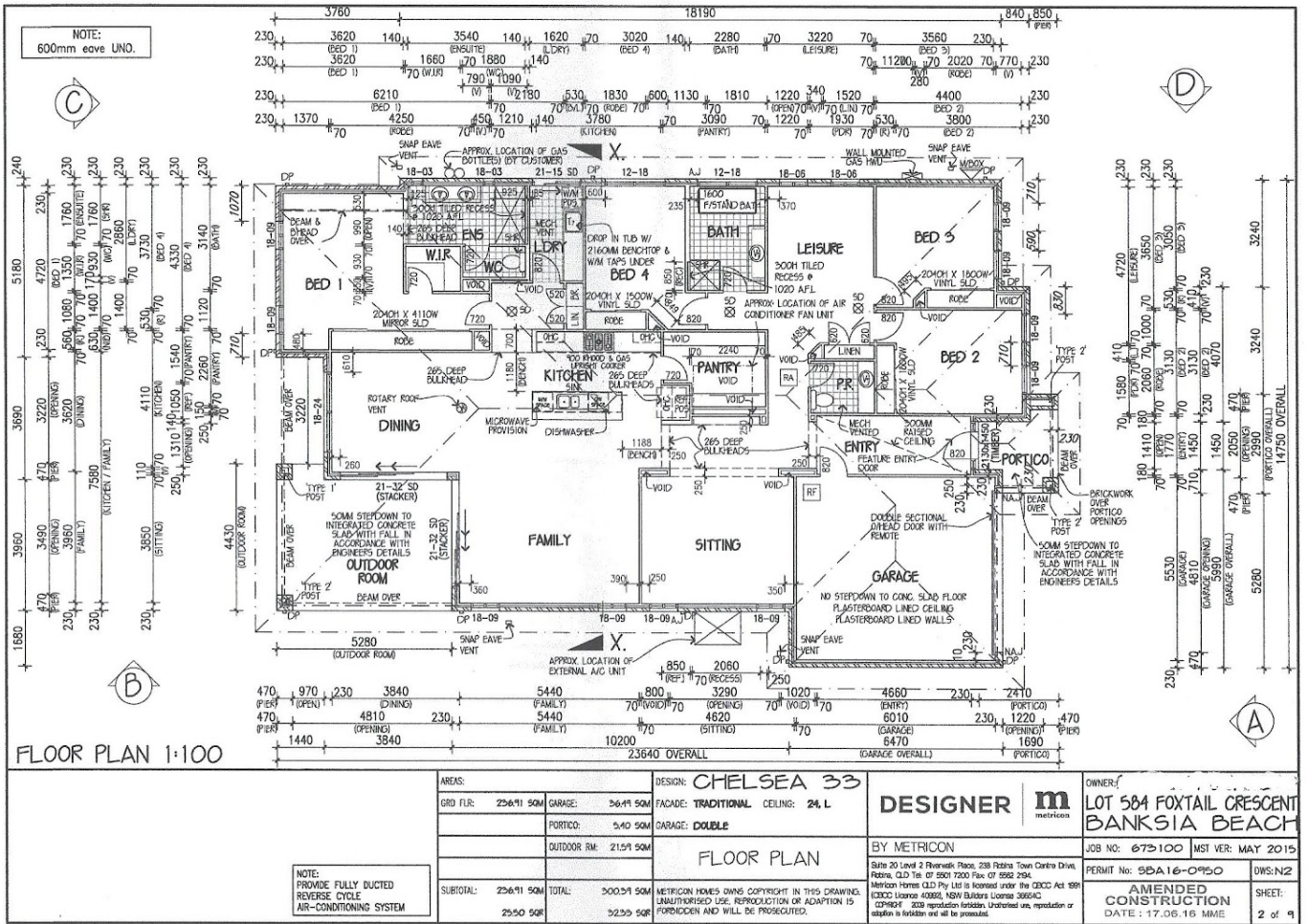
**4 BED | 2 BATH | 2 CAR**

**PRICE:**  
\$1,050,000

**OPEN FOR INSPECTION:**  
N/A



**Geoff and Rose Tutt**  
**0414230130**  
 geoff@atrealty.com.au  
[www.atrealty.com.au](http://www.atrealty.com.au)



Disclaimer: Please note this floor plan is for marketing purposes and is to be used as a guide only. All dimensions are estimates only and may not be exact measurements.