

FOR SALE

AS CLOSE TO PERFECT AS IT GETS...

Sharon Vyner is proud to present this executive style residence to the market for the very 1st time...

The home is the epitome of class, from the award-winning kitchen with Granite Benchtops to the porcelain tiles that run throughout the home including the outdoor alfresco area that measures 60m2 in size.

- Double Door Pantry + Internal Pull-Out Drawers
- Water Connection For Fridge
- Double Bowl Sink + Preparation Sink With Garbage Disposal Unit
- 900mm Gas Cooktop, Electric Oven and Built-in Microwave
- Feature LED Lighting Throughout The Home

The living, kitchen and dining is all open plan, and large by-fold doors allow for a gentle flow to the yard for kids and grandkids to run and play. The added feature of a soundproof media room makes movie night a joy for all the family.

- Four Bedrooms, Split System Air Conditioning
- Granite Benchtops To Ensuite & Family Bathroom
- Walk In Robe To Master & Built-ins To Remaining Bedrooms
- Internal Laundry + Storage

Parking for the boys' toys comes easy, as there is a 7.5m x 10m powered shed with 3.3m opening at the side of this property. Access from the road is through a remote-controlled sliding gate, and concrete pavers under the grass allows for an easy maneuver of a caravan or large boat.

- Double Garage With Sealed Floor
- Solar Power (2.8kw)
- 4,000 ltr Water Tank For The Mature and Manicured Gardens

If you are looking for a quality-built home in a brilliant location, this is it. Call to arrange your inspection today... Sharon Vyner – 0417 77 8606

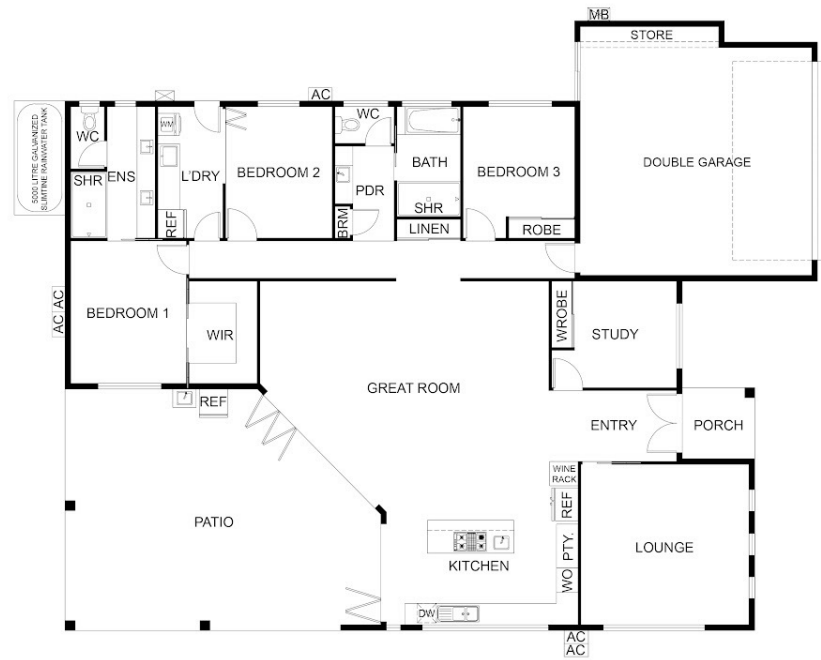
4 BED | 2 BATH | 2 CAR

PRICE:
Contact Agent

OPEN FOR INSPECTION:
N/A



Sharon Vyner
0417778606
sharonvyner@atrealty.com.au
www.atrealty.com.au



FLOOR PLAN

This floor plan including furniture, fixture measurements and dimensions are approximate and for illustrative purposes only.
 @Realty gives no guarantee, warranty or representation as to the accuracy and layout.
 All enquiries must be directed to the agent, vendor or party representing this floor plan.

Gordonvale

Disclaimer: Please note this floor plan is for marketing purposes and is to be used as a guide only. All dimensions are estimates only and may not be exact measurements.