

SOLD

"THE OLD STATION MASTERS HOUSE" PRIVATELY HIDDEN IN THE MIDDLE OF TOWN!

Peaceful and Spacious - You're guaranteed to love this Solid Timber Home in the heart of Ravenshoe.

Timber charmer of a home -contains 144 square meters of under roof space with timber floors in the bedrooms and enclosed veranda and is tiled in the kitchen-living and hallway, this house includes a huge undercover (open) lower-level workshop/entertainment area, approximately 2cm from a legal height it would be a great space to enclose.

This house is as private as it gets for being in the heart of town, hidden amongst the trees- being the old station masters house it backs onto the Railway Caravan park and only has one side neighbour.

The house is timber tongue and groove, offering four large-sized bedrooms three of which have original french doors.
The kitchen has been renovated to a modern style with a new gas burner stove and dishwasher. Perfect for the fantastic cook and it has its own room just for food storage!

One bathroom and one separate toilet.

It has a large combined dining and living room, The office space is nicely nestled at the back entry and the enclosed veranda holds the laundry and small second TV or gaming area.

A lovely large family home, it really has all the character of the beautiful timber homes Ravenshoe has offered over the years but the convenience of a more modern kitchen.

The Garden is well established and offers a cool space for outdoor relaxing, the strong standing clumping bamboo is huge and by the looks is the structural kind, There are some fruit trees - mulberry, banana, mandarin, orange, and avocado as well as some herbs.

Be sure to explore the Virtual tour and the Property video to fully appreciate this property. Call Vikki form down to earth realty Ravenshoe 0472 910 300

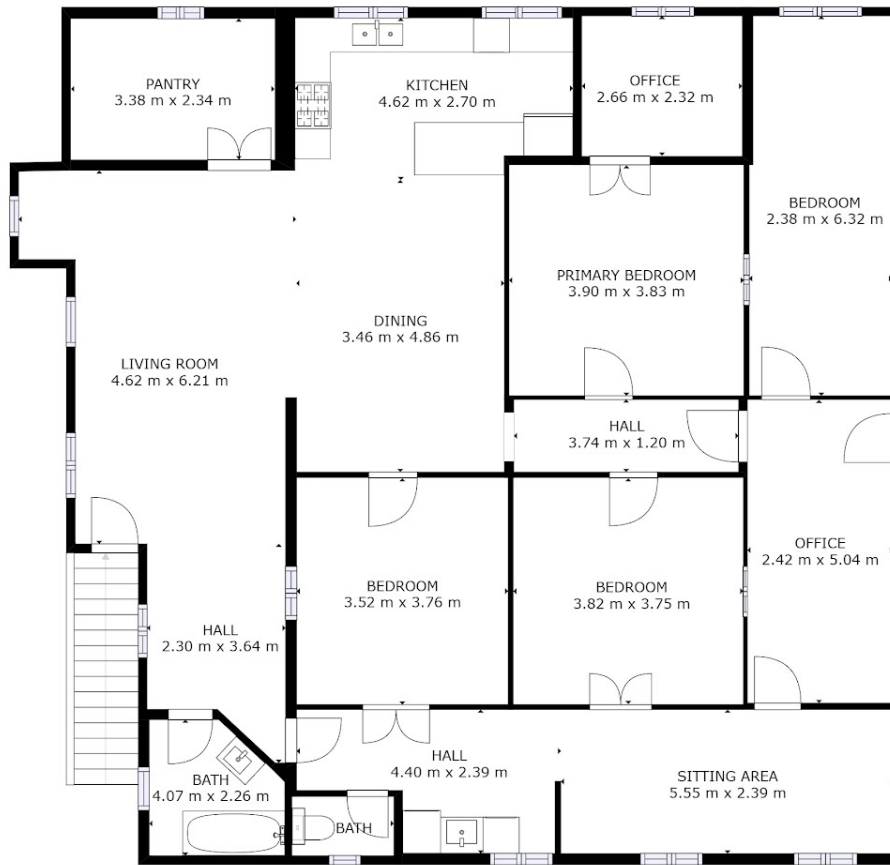
4 BED | 1 BATH | 2 CAR

PRICE:
\$288,920

OPEN FOR INSPECTION:
N/A



Vikki Burnett
0472910300
vikki@atrealty.com.au
www.atrealty.com.au



FLOOR 1

GROSS INTERNAL AREA
FLOOR 1: 185 m²
TOTAL: 185 m²
SIZES AND DIMENSIONS ARE APPROXIMATE, ACTUAL MAY VARY.

Disclaimer: Please note this floor plan is for marketing purposes and is to be used as a guide only. All dimensions are estimates only and may not be exact measurements.