

SOLD

CHARACTER HOME IN BLUE CHIP SUBURB

Situated on a peaceful street in Coorparoo, this beautiful original Queenslander has endless potential to add further value. The ground level is fully slabbed, and the home can be easily built-in underneath to provide additional living space for growing families!

The upper level offers an exceptional lifestyle while you finalise your plans to expand. It has a private front balcony overlooking the leafy suburban views. Beyond here is a generous open living, dining and kitchen area with timber floors, high ceilings, breezeways, VJ walls and soft neutral tones which reflect the natural light captured throughout. Air-conditioning in the living room and master bedroom allow for comfortable living year-round.

There are two generously sized bedrooms, featuring built-in robes. They are serviced by the main bathroom.

Outside is a fully landscaped backyard with plenty of room for a pool to be added (STCA), large back patio with great leafy views. Under the property is concreted with laundry and a two-car tandem car park (with one roller door) for added convenience.

Additional Features:

- Superb original Queenslander with ornate features
- Low maintenance 405m2 block
- Renovate and build in to create a great family property (STCA)
- Exceptional storage available under the home
- Water tank

This home secures a desirable, city-fringe location nearby The Gabba and South Brisbane, Wembley Park and Coorparoo Square with shopping, cinemas and dining options. It is moments from Coorparoo train station and well-served by bus routes into Brisbane City. It is nearby a fine selection of schools including Coorparoo State School, Villanova College, Loreto College and Anglican Church Grammar School (Churchie), as well as many childcare centres and kindergartens.

A great home for a young professional couple looking to break into the Brisbane market, growing family, or the savvy renovator.

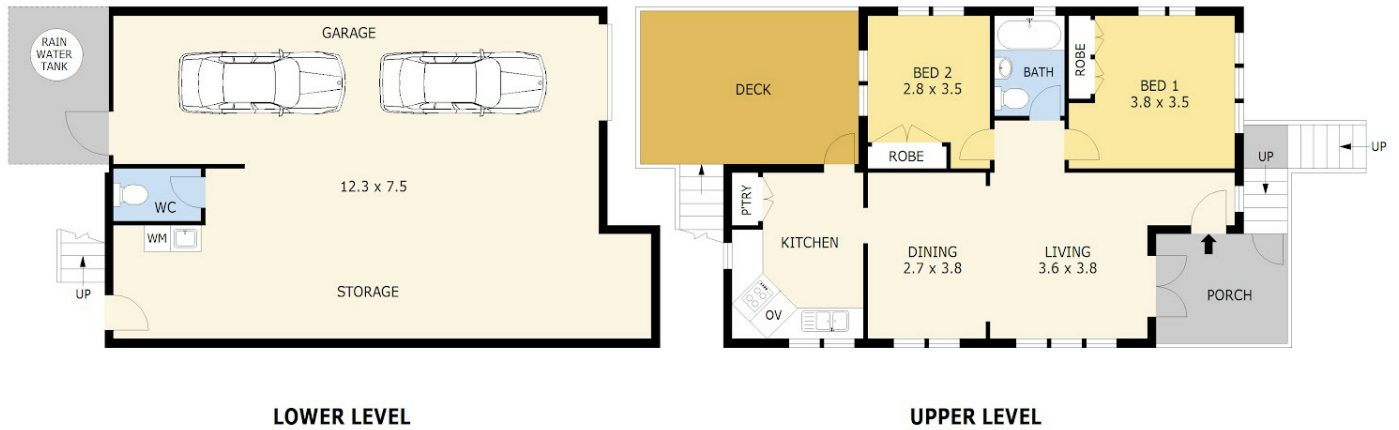
2 BED | 1 BATH | 1 CAR

PRICE:
\$1,234,568

OPEN FOR INSPECTION:
N/A



Mitchell Wakeham
0400297141
newvoguerealty@atrealty.com.au
www.atrealty.com.au



Scale in metres. Indicative only. Dimensions are approximate. All information contained herein is gathered from sources we believe to be reliable. However we cannot guarantee its accuracy and interested parties should rely on their own enquiries.

Lower Level	- 93 m ²
Upper Level	- 69 m ²
Deck	- 18 m ²
Porch	- 8 m ²
Total	- 188 m²

19 Geera Street, Coorparoo

Disclaimer: Please note this floor plan is for marketing purposes and is to be used as a guide only. All dimensions are estimates only and may not be exact measurements.