

13 SHUTE AVENUE, BERWICK, VIC, 3806



FOR SALE

LOCATION, CONVENIENCE, LIFESTYLE

4 | 2 | 2

**** CLOSING DATE - TUES 26th APRIL @ 6PM **** (unless sold prior)

Perfectly positioned within a prized pocket of North-side Berwick, this tastefully renovated 4-bedroom home sits proudly on approx. 863m² is sure to impress anyone looking for a quality family home with an exceptional lifestyle to match!

Comprising;

- Master suite complemented by an ultra-chic modern ensuite complete with a dual basin stone vanity, walk-in shower and relaxing deep bathtub via the large walk-thru robe.

- Multiple living zones incl. a front lounge/dining, open-plan family & meals area and downstairs features a storage room/home office and a large rumpus room that could easily be converted into a second master with its very own walk-in robe & full ensuite – ideal for in-law accommodation or teenager's retreat.

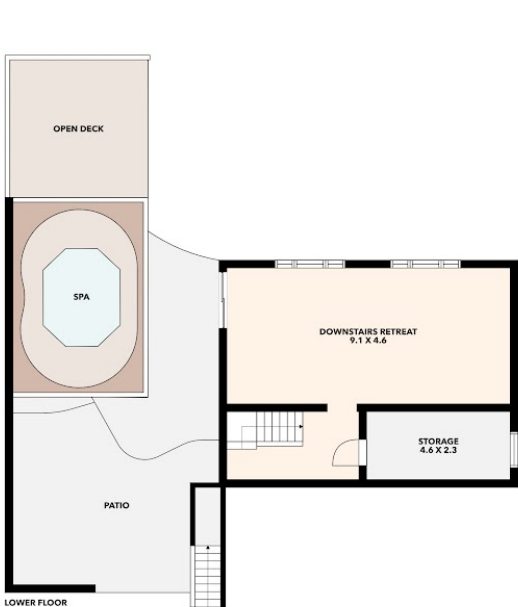
- A fully appointed entertainer's kitchen with an island/breakfast bar, stainless steel appliances, plenty of cupboards & bench space, as well

PRICE: \$1,150,000 - \$1,250,000 **OPEN FOR INSPECTION: N/A .**

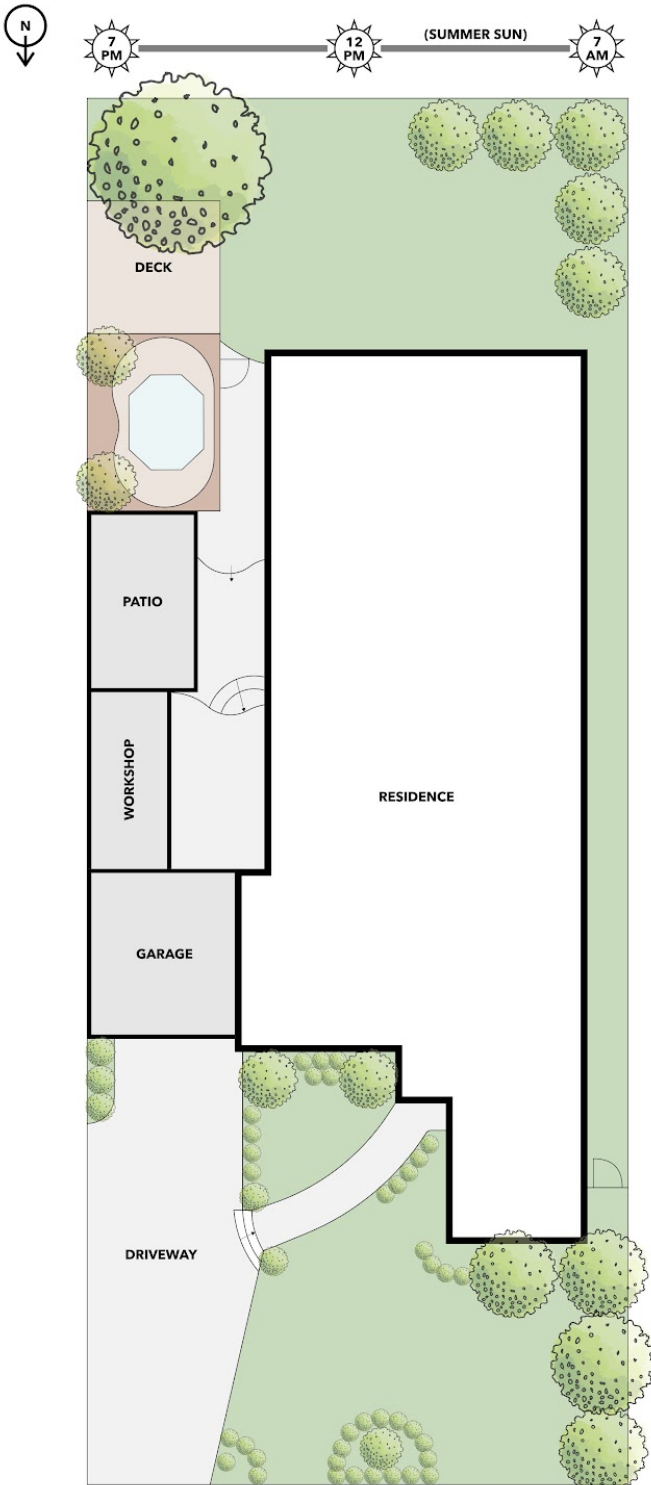
Emily Grainger | 0421929013 | emily@grealestate.com.au | www.grealestate.com.au

13 SHUTE AVENUE, BERWICK

SITE AREA 864M² | FLOOR AREA 300M² (32.35SQ) | BED 3 | BATH 2 | CAR 2



FLOOR PLAN



SITE PLAN

GRAINGER® REAL ESTATE DOES NOT GUARANTEE THE ACCURACY OF ANY INFORMATION IN THIS BROCHURE. CREATED BY DIGITALMEDIUM.NET.AU

Disclaimer: Whilst every effort has been made to ensure the accuracy of these particulars, no warranty is given by the vendor or the agent as to their accuracy. Interested parties should not rely on these particulars as representations of fact but must instead satisfy themselves by inspection or otherwise.