



SOLD

CHIC AND SPACIOUS TOWN HOME IN PRIME LOCATION

'Greenlaw Villas' is a boutique complex of four townhouses located in a wide and quiet tree lined street in highly sought highside Indooroopilly. Situated a mere 7km from Brisbane CBD the location is superb, offering proximity to Indooroopilly train station, UQ and city buses, numerous prestigious schools, sporting facilities and the mega shopping centre of Indooroopilly.

Located at the front of the complex, this property has fantastic street appeal and the feel of a stand-alone home with only one common wall located in the garage. A remote-controlled panel lift door provides access to the side-by-side car accommodation which incorporates the laundry area at the rear with internal drying line; a wall of storage cupboards; direct entry to the kitchen for unloading groceries and the side utility area.

Open plan living on the lower-level features granite bench tops and 2 pac cabinets to the kitchen, large format floor tiles, high ceilings, white shutters, and Crimsafe security to the living area. Opening from the living area is a delightfully private courtyard framed by tall hedges and topiary trees making a perfect spot for entertaining. White shutters are again featured on the upper level where three large bedrooms and main bathroom are accessed from the generously sized study/living area. The main bedroom with ensuite has its own balcony where you can take in the elevated views of the surrounding area, and with Crimsafe security you can have peace of mind ventilation but also enjoy an uninterrupted view.

Perfect executive home to make a great impression or a readily rentable investment option.

Key Attributes:

- * 209 sqm - Internal 139 sqm + External 70 sqm
- * Freshly painted throughout
- * Black granite and 2 pac kitchen with glass splashback and Bosch appliances
- * Open plan living flowing to private courtyard
- * Three bedrooms with built in robes including shelving
- * Upstairs living area or optional study/home office
- * Window treatments featuring white shutters, venetian blinds, or vertical blinds
- * Main bathroom, ensuite and downstairs powder room with Grohe tapware
- * High ceilings with downlights

3 BED | 2 BATH | 2 CAR

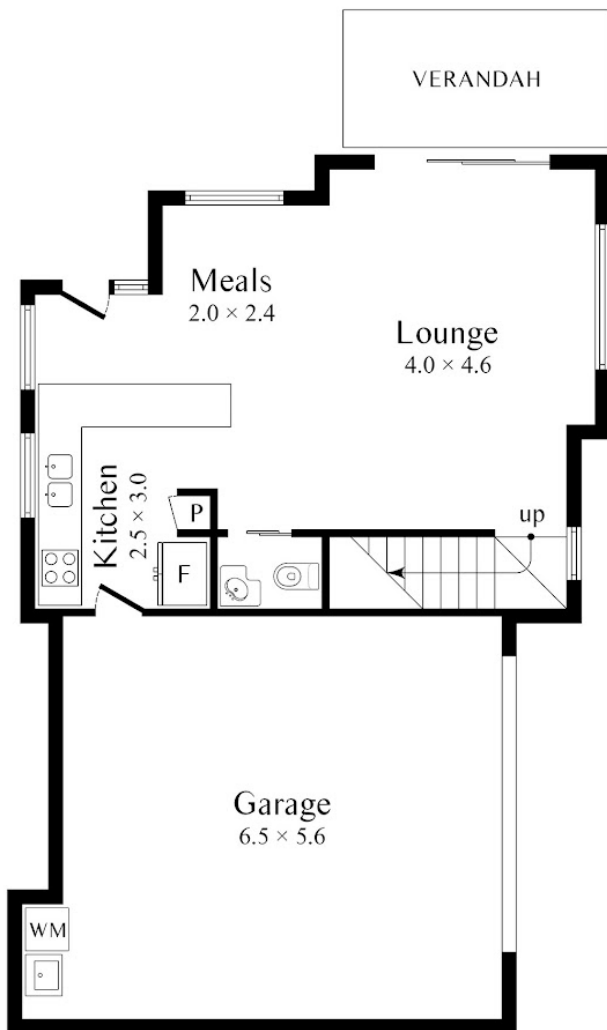
PRICE:
\$976,000

OPEN FOR INSPECTION:
N/A

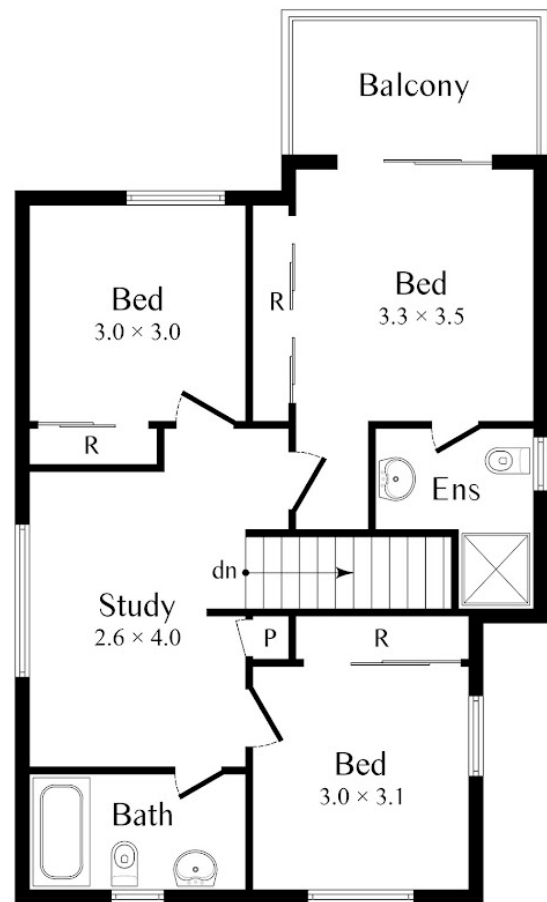


Sue Barnes
0418988715
suebarnes@atrealty.com.au
www.atrealty.com.au

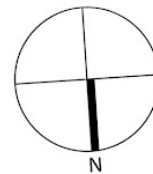
Lower Level



Upper Level



INTERNAL LIVING AREA: 118 m²
TOTAL LIVING AREA: 171 m²



Disclaimer: Please note this floor plan is for marketing purposes and is to be used as a guide only. All dimensions are estimates only and may not be exact measurements.