



SOLD

STYLISH LIVING, EXCEPTIONAL CONVENIENCE!

In a class of its own for its central location, even more memorable for exceptional single level spaces, this two bedroom unit offers unrivaled investment or lifestyle rewards. Equally attractive to downsizers, similarly enticing to first home buyers! Generous and inviting living area is complemented by a similarly spacious kitchen/dining spaces that enjoy lots of natural light. Two generous sized bedrooms both with BIR's offer ample accommodation and share a central bathroom featuring separate bath and shower. Outside, the image of appealing low-maintenance lifestyle with plenty of space to entertain. Other features include, remote double garage, ducted heating, evaporative cooling, stainless steel appliances, dishwasher and low maintenance gardens add further appeal in a highly sought after location merely moments away from Central Square shopping center, bike paths & walking trails, local schools, public transport, easy freeway access to the C.B.D and only a short drive away from Altona foreshore. Lifestyle at your doorstep!

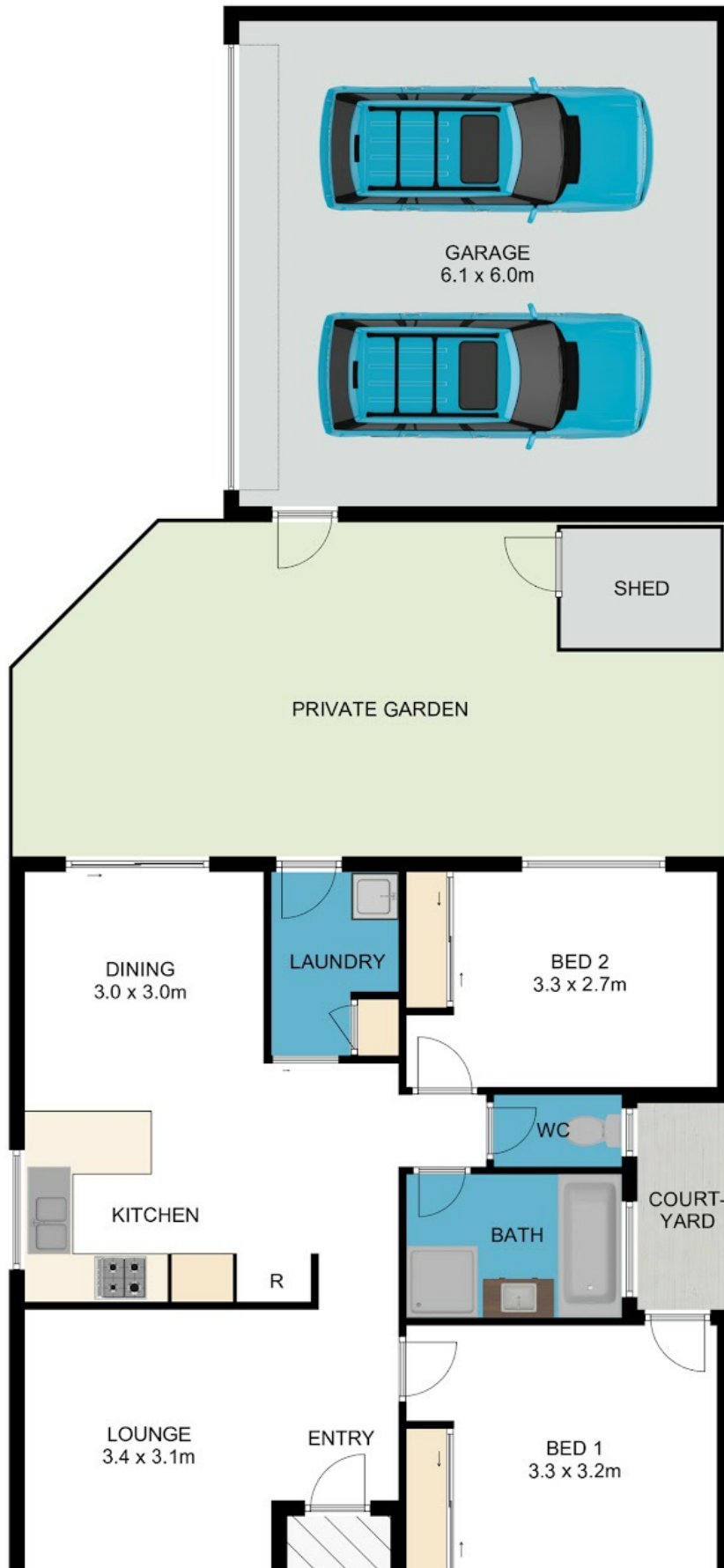
2 BED | 1 BATH | 2 CAR

PRICE:
\$515,000

OPEN FOR INSPECTION:
N/A



Joseph Hanna
0423966320
joseph@atrealty.com.au
www.atrealty.com.au



Disclaimer: Please note this floor plan is for marketing purposes and is to be used as a guide only. All dimensions are estimates only and may not be exact measurements.

Joseph Hanna
0423966320

joseph@arealty.com.au
www.atrealty.com.au

1/1 Rattray Court, Altona Meadows

Whilst every attempt has been made to ensure the accuracy of the floor plan contained here, measurements of doors, windows, rooms and any other items are approximate and no responsibility is taken for any error, omission, or mis-statement. This plan is for illustrative purposes only and should be used as such by any prospective purchaser. The services, systems and appliances shown have not been tested and no guarantee as to their operability or efficiency can be given.



