



**SOLD**

## UNDER CONTRACT

Amazing home on offer that is a true entertainers paradise with a real focus on outdoor living. This one owner home offers lots of amazing upgrades like reverse cycle air conditioning, alarm system, solar panels, extra car bay and 3 outdoor patios, huge inground pool with solar heating and overflow spa that offers the ultimate in relaxation.

- Set on a 664 sqm block • 231 sqm of internal living area and 300 sqm in total area
- Built by New Generation Homes (Summit Group) in 2013
- Ducted reverse cycle air conditioning with zones and touch panel
- Alarm system • Separate study with double doors
- Separate home theatre with door to zone off from the living areas
- Large master bedroom with walk in robe
- Designer kitchen with island bench, 900 cooktop and oven, dishwasher and extensive overhead cupboards
- Large activity room
- 26 solar panels (6.5 kw) to keep running costs down
- Park down the road is ideal for the kids to play
- Great location with quality homes surrounding and freeway access within minutes
- Extra car parking bay to frontage
- Amazing outdoor entertaining area with a large alfresco & two adjoining patios that create a stunning outdoor oasis
- Sparkling inground pool will keep the kids entertained all summer long while the adults enjoy the overflow spa
- Outdoor shower

**4 BED | 2 BATH | 2 CAR**

**PRICE:**  
**\$650,000**

**OPEN FOR INSPECTION:**  
**N/A**



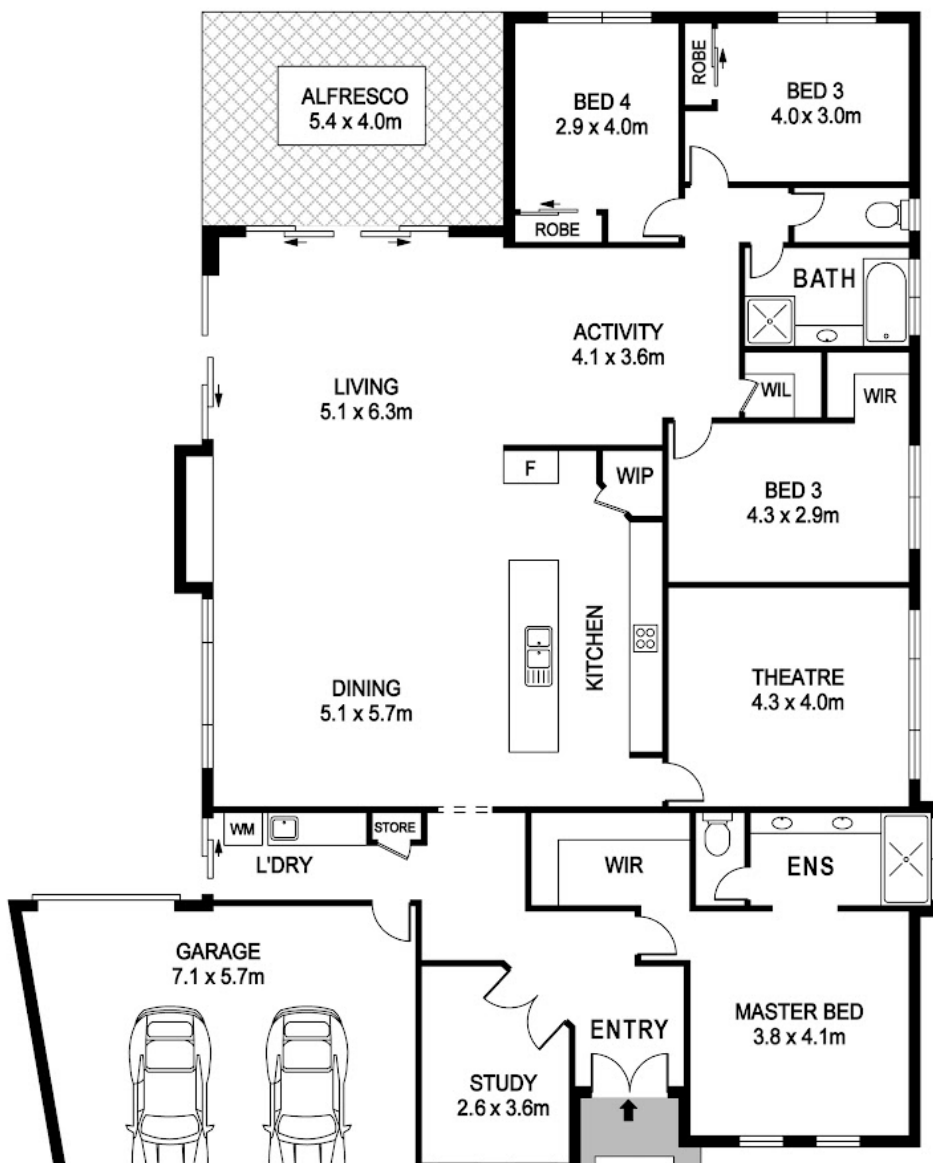
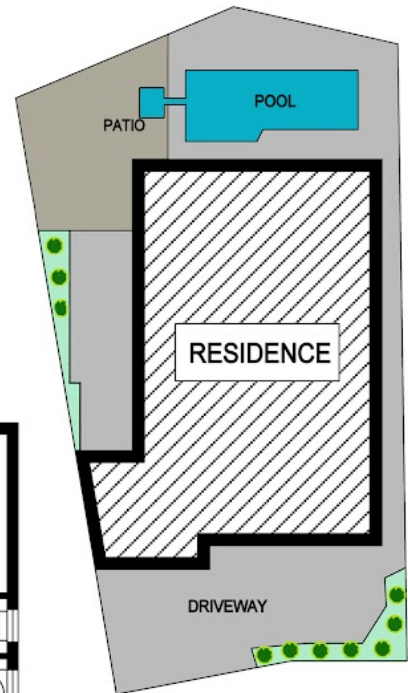
**Clarissa Alsop**  
**0421827669**  
clarissa@atrealty.com.au  
[www.atrealty.com.au](http://www.atrealty.com.au)

# 3 Palomino Parade BALDIVIS



Block Size 664m<sup>2</sup> | 4 Bedrooms | 2 Bathrooms | 2 Car  
Internal 232m<sup>2</sup> | External 68m<sup>2</sup> | Total 300m<sup>2</sup>

Clarissa Alsop | 0421 827 669



Disclaimer: Please note this floor plan is for marketing purposes and is to be used as a guide only. All dimensions are estimates only and may not be exact measurements.



REAL ESTATE FLOOR PLANS | [houseguru.com.au](http://houseguru.com.au) | © House Guru Real Estate Photography™

Whilst every attempt has been made to ensure the accuracy of the floor plan contained here, measurements of doors, windows, rooms and any other items are approximate and no responsibility is taken for error, omission or mis-statement. This plan is for illustrative purposes only and should only be used as such by any prospective purchaser. The services systems and appliances shown have not been tested and no guarantee as to their operability or efficiency can be given.

**Clarissa Alsop**  
0421827669  
[clarissa@atrealty.com.au](mailto:clarissa@atrealty.com.au)  
[www.atrealty.com.au](http://www.atrealty.com.au)

